

Kansas State Report Card 2011

Council of Superintendents
October 20th 2010

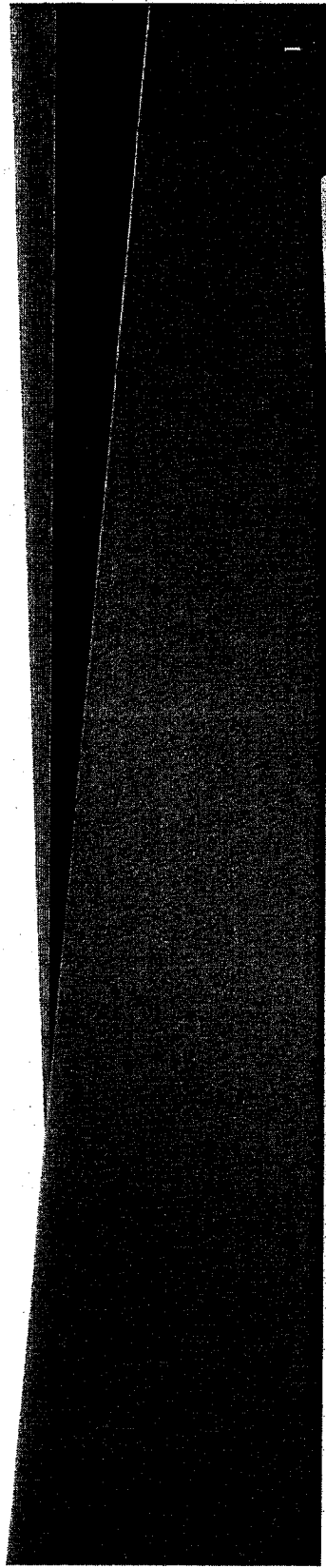


EXHIBIT
1148

EXHIBIT
33

Subjects Assessed

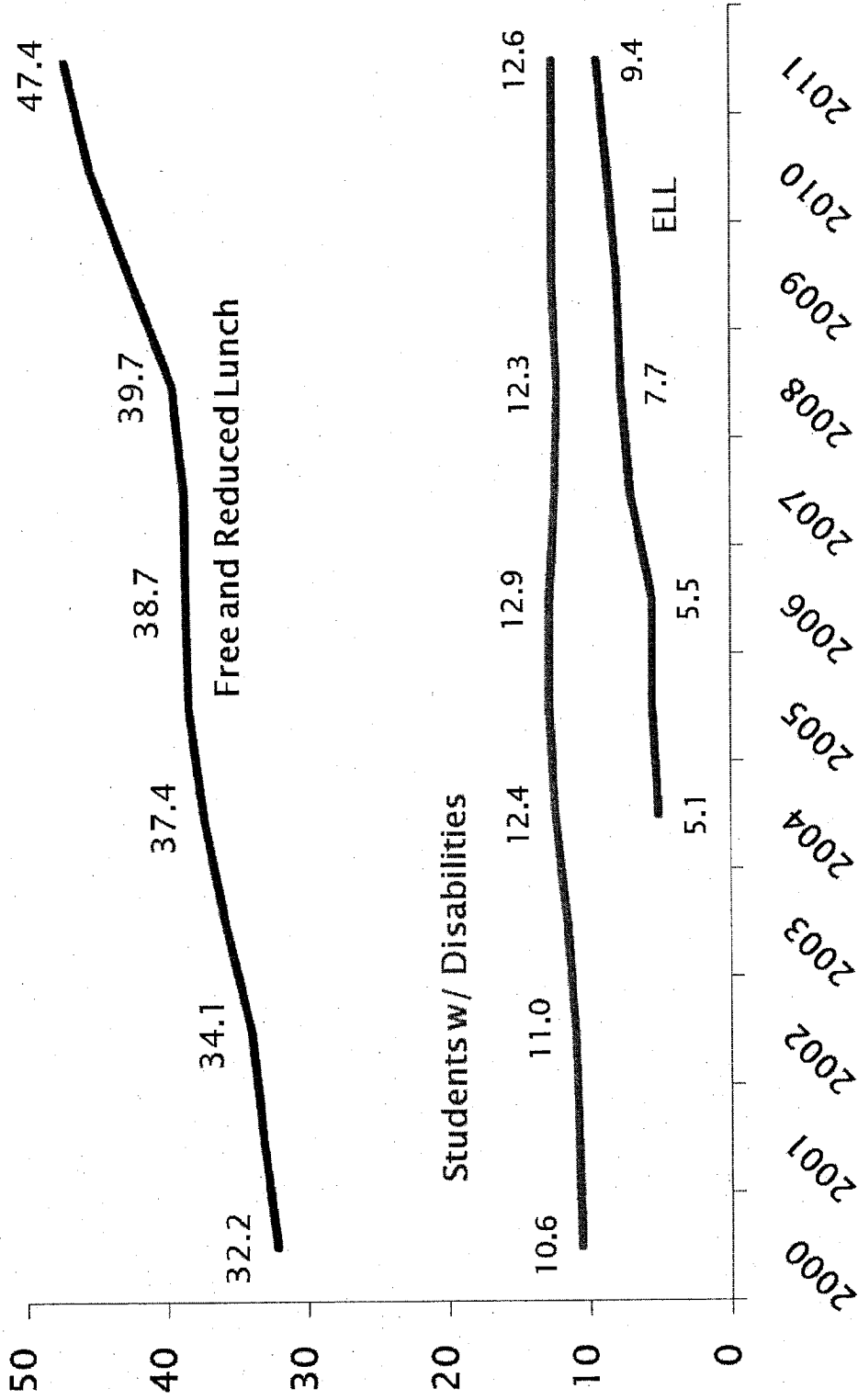
- ▶ 265,298 Reading (*Grades 3-8, HS*)
- ▶ 266,742 Math (*Grades 3-8, HS*)
- ▶ 147,541 Science (*Grades 4, 7, HS*)
- ▶ 43,265 KELPA (*Grades K-12*)

Disaggregated Groups

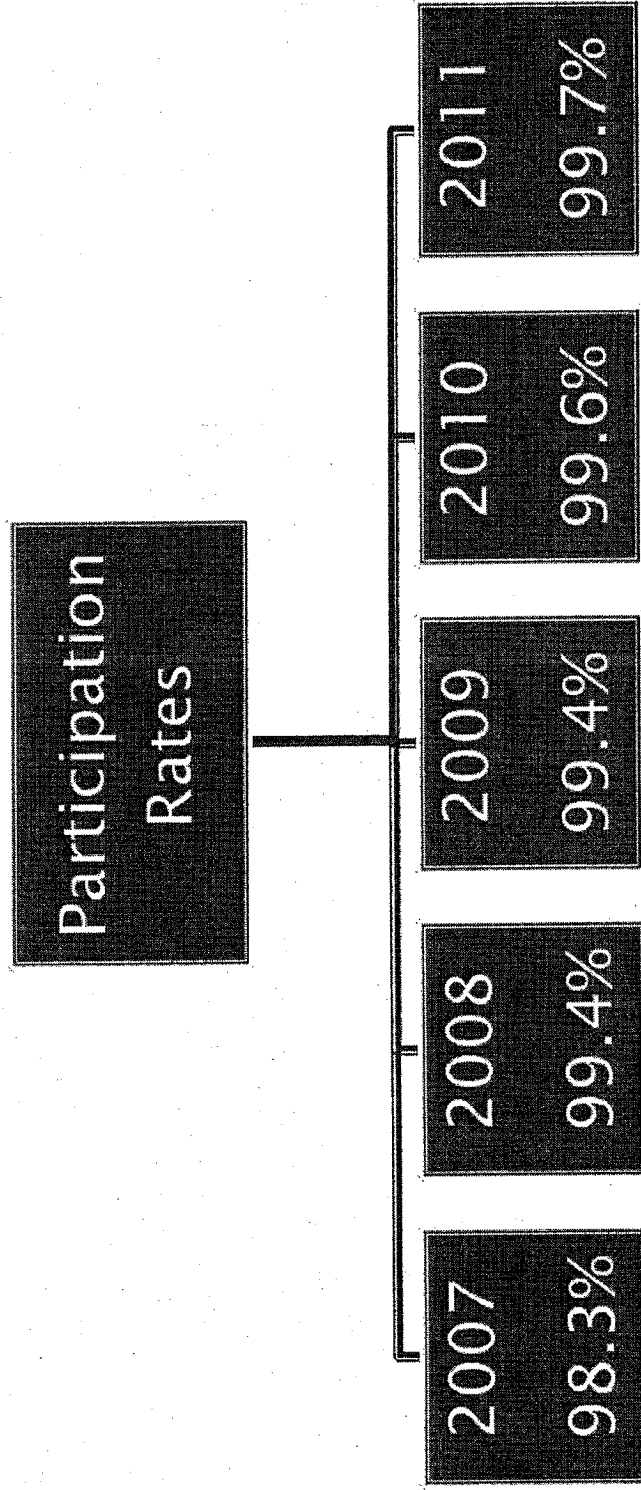
- ▶ All students
- ▶ Males & females
- ▶ Ethnic groups
- ▶ Free & reduced lunch
- ▶ Students with disabilities
- ▶ English Language Learners

Kansas Student Population Trends

(Percent of K-12, September Unaudited Enrollment, Public Schools)



Reading



Reading - Participation Rates for Groups

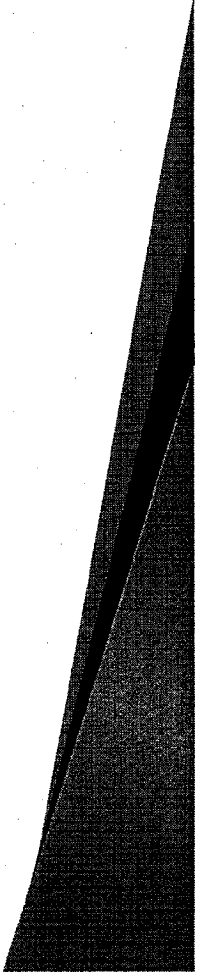
	2010	2011
All Students	99.5%	99.7%
Ethnic Groups	99.0%-99.7%	99.4%-100%
Free & Reduced Lunch	99.3%	99.6%
Students with Disabilities	99.0%	99.4%
English Language Learners	99.2%	99.6%

Reporting “Standard & Above”

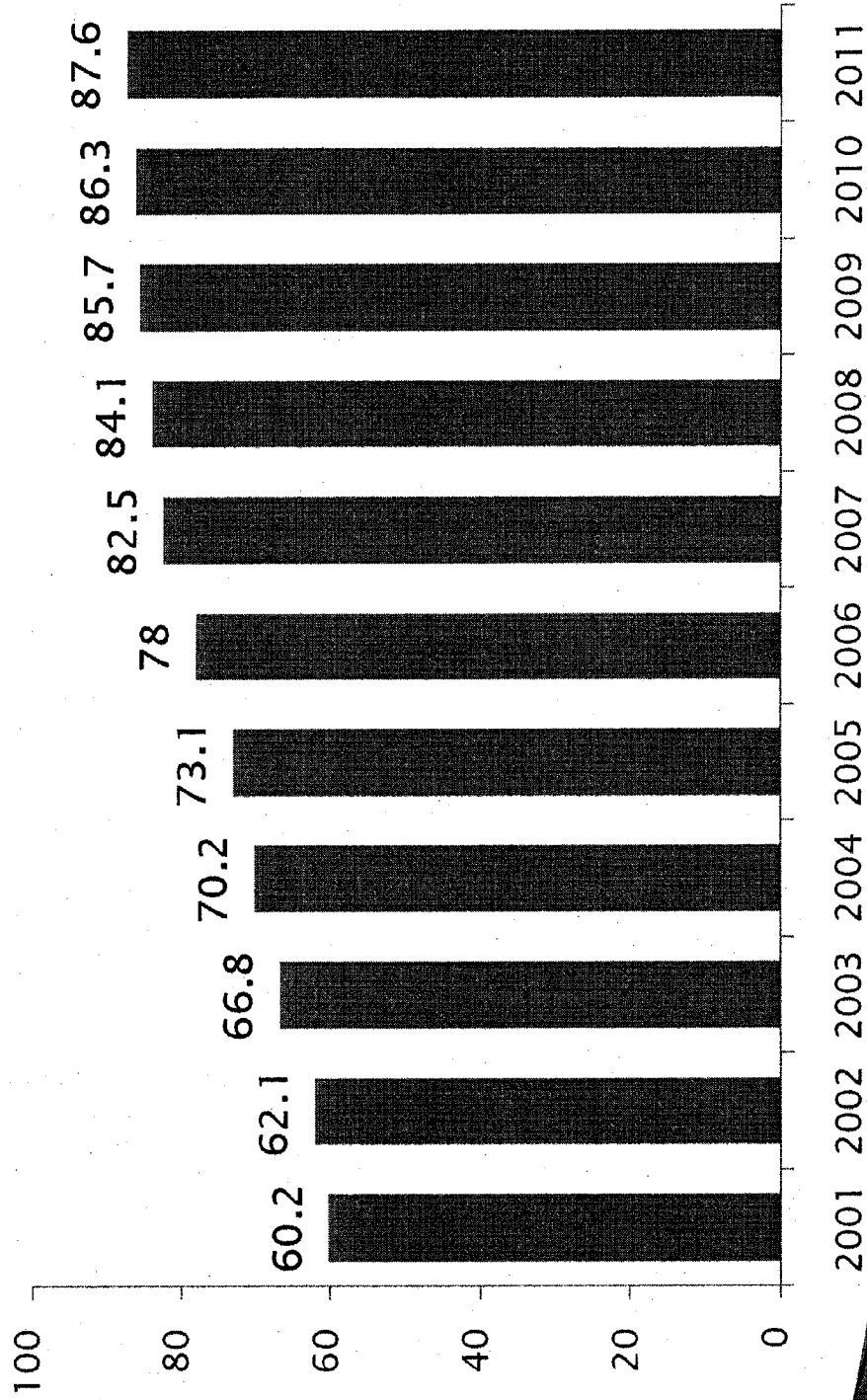
- ▶ Reported percentages are totals of all students in the top three performance levels.

Example from Reading, All Students:

- Exemplary 32.3
 - Exceeds Standard . . 29.8
 - Meets Standard 25.6
- % at Standard or Above = 87.6



Kansas Reading, All Students



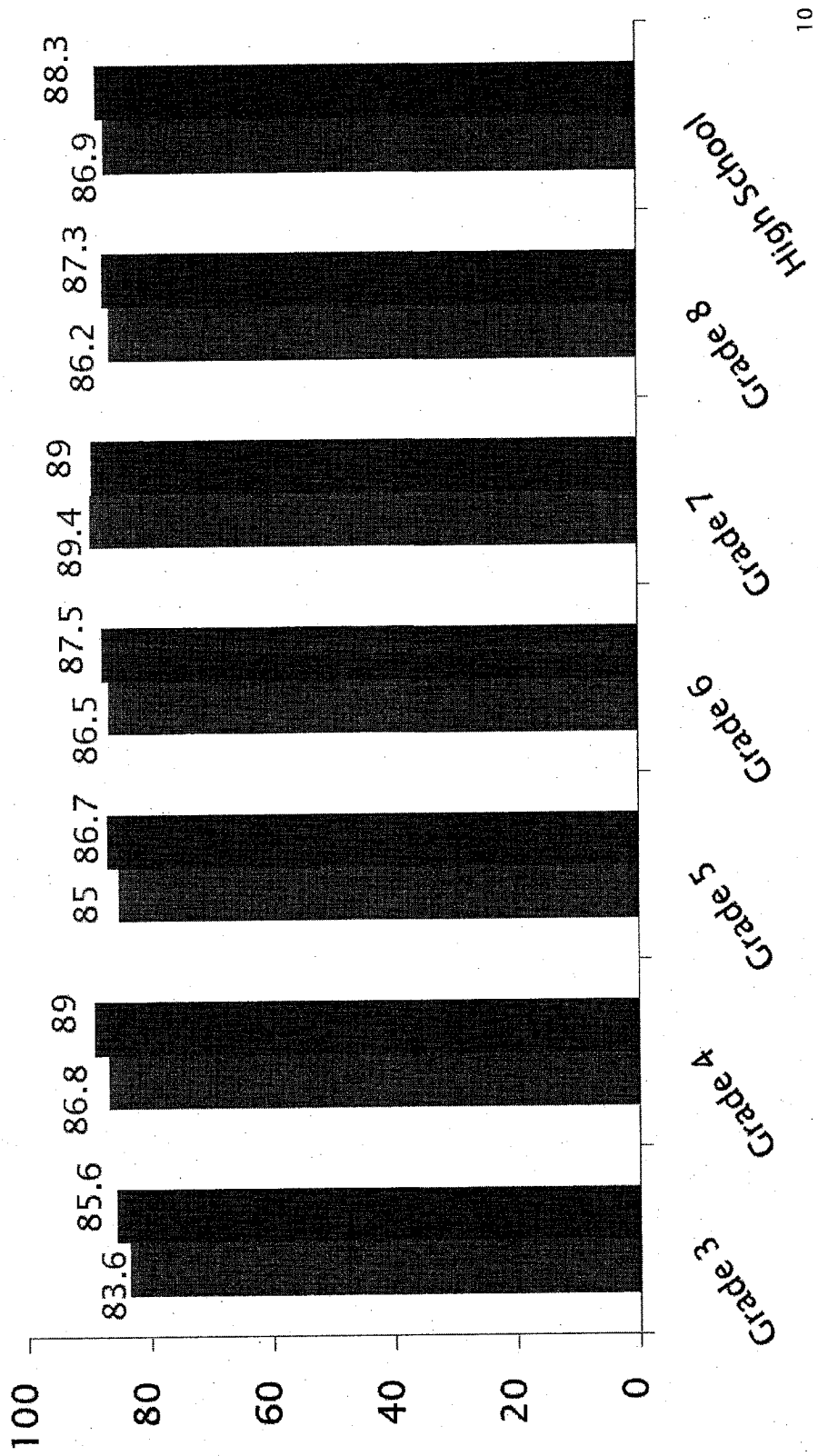
Reading - Student Achievement by Grade

Percentage of students in the top three performance levels

	2010	2011
3 rd Grade	83.6	85.8
4 th Grade	86.8	89.0
5 th Grade	85.0	86.7
6 th Grade	86.5	87.5
7 th Grade	89.4	89.0
8 th Grade	86.2	87.3
High School	86.9	88.3

Reading - Student Achievement by Grade

■ 2010 ■ 2011

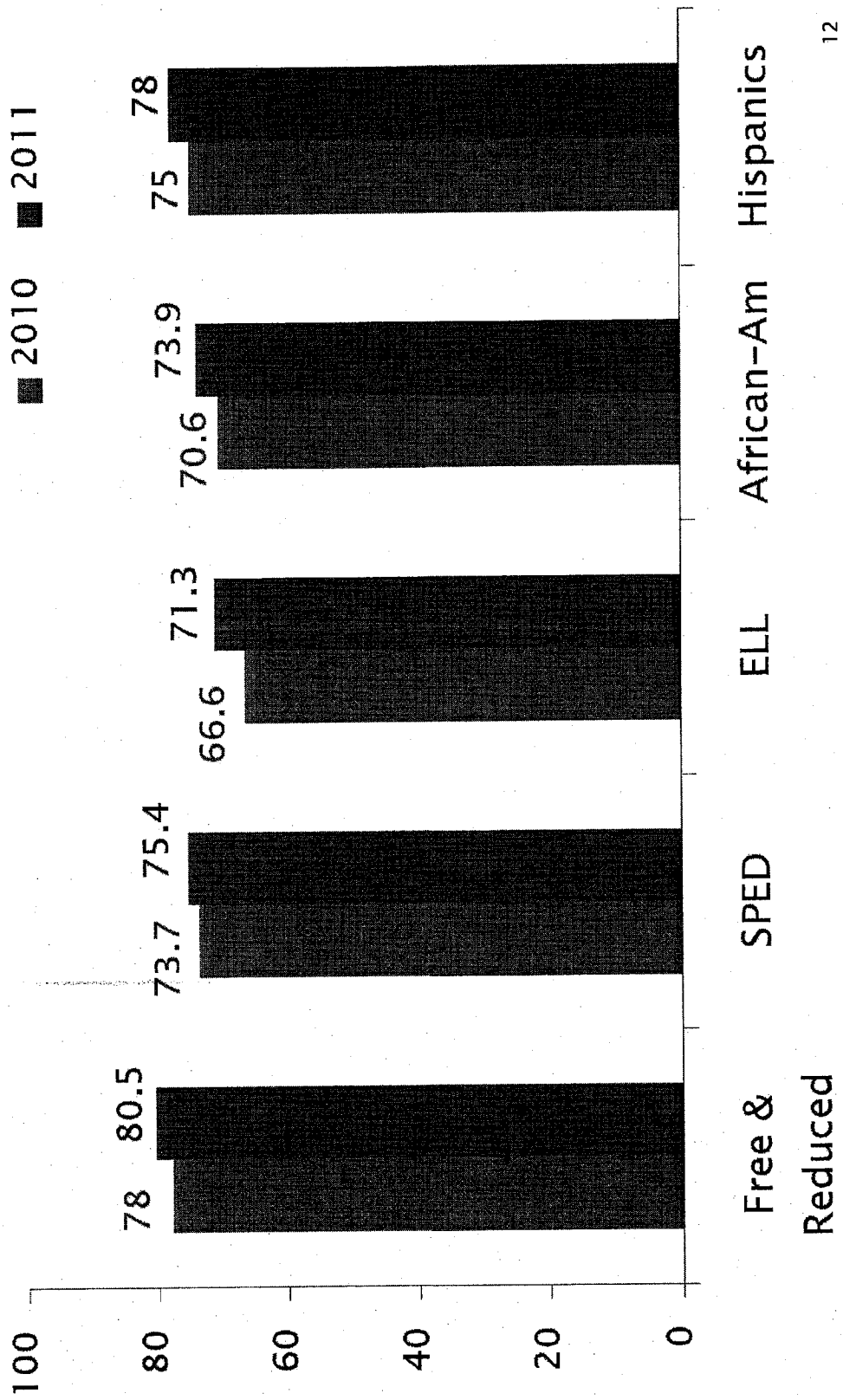


Reading - Student Achievement by Subgroup

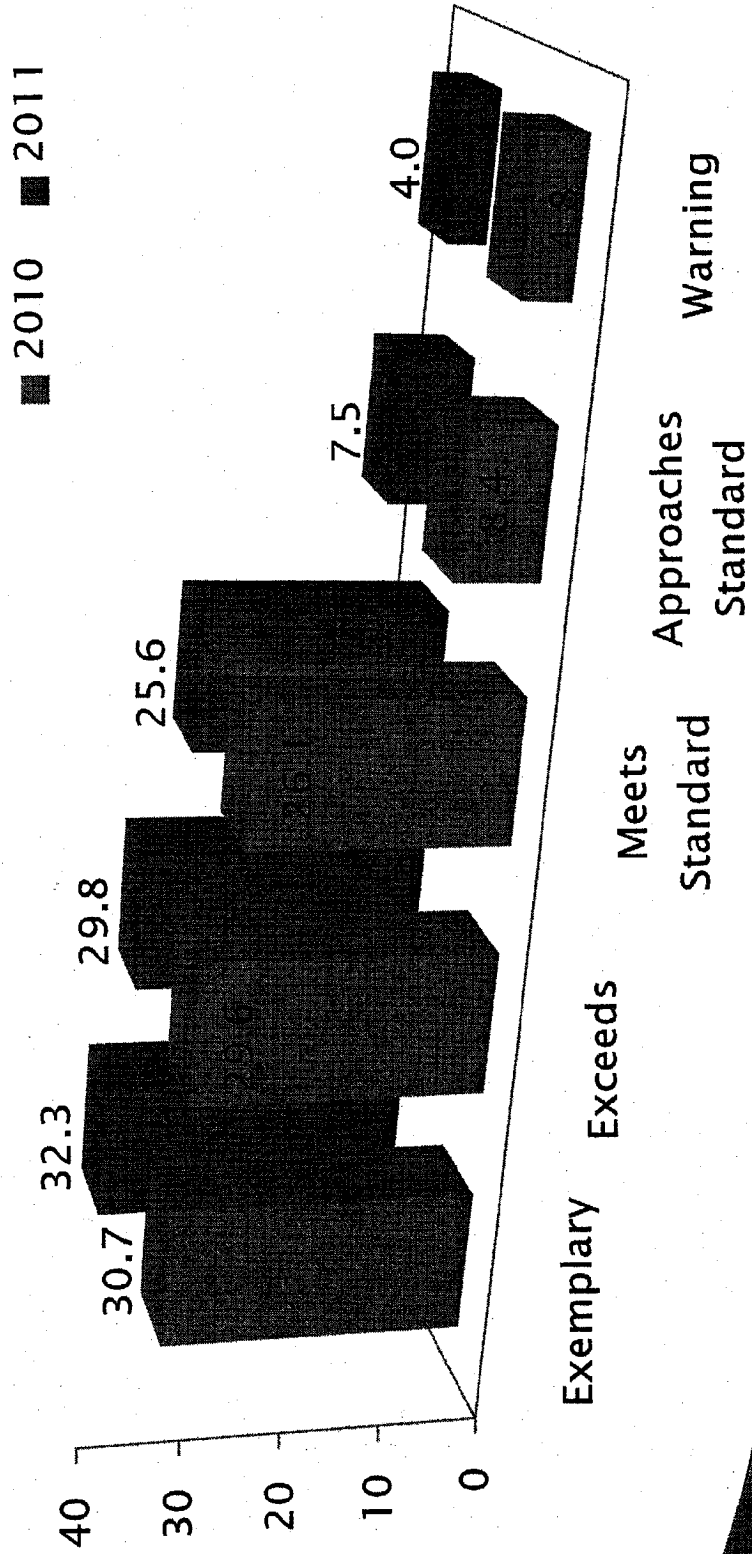
Percentage of students in the top three performance levels

	2010	2011
Free & Reduced Lunch	78.0%	80.5%
Students with Disabilities	73.7%	75.4%
English Language Learners	66.6%	71.3%
African-Americans	70.6%	73.9%
Hispanics	75.0%	78.0%

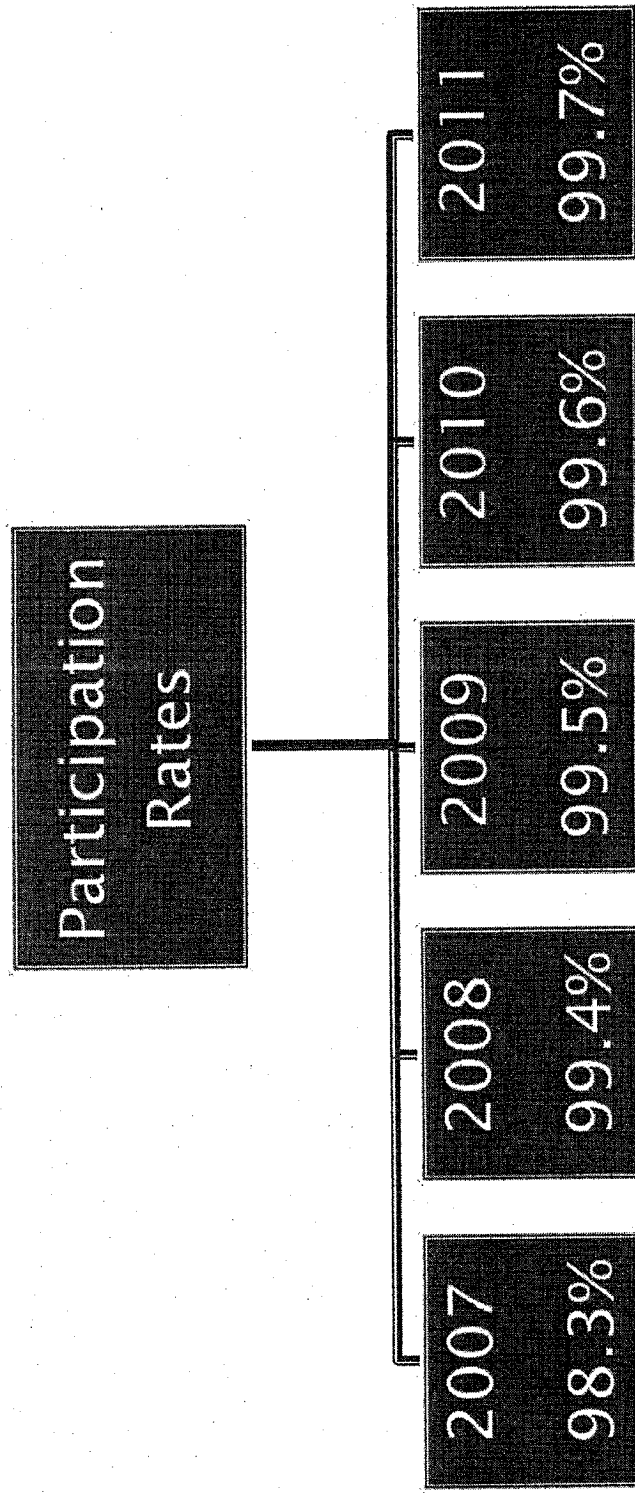
Reading-Student Achievement by Subgroup



Reading - Performance Levels



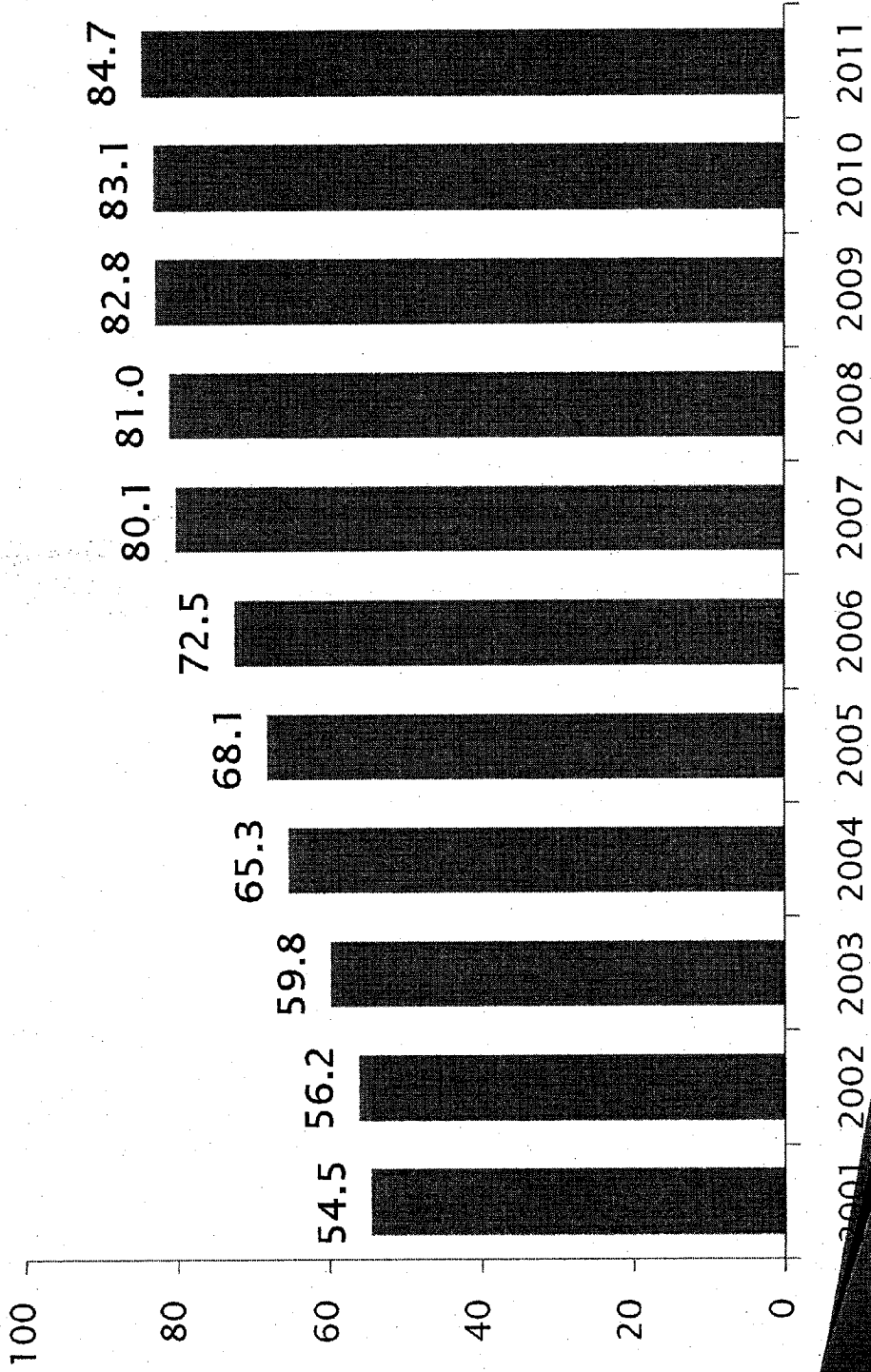
Math



Math - Participation Rates for Groups

	2010	2011
All Students	99.6%	99.7%
Ethnic Groups	99.5%-99.7%	99.5%-100%
Free & Reduced Lunch	99.5%	99.7%
Students with Disabilities	99.2%	99.4%
English Language Learners	99.5%	99.7%

Kansas Math, All Students

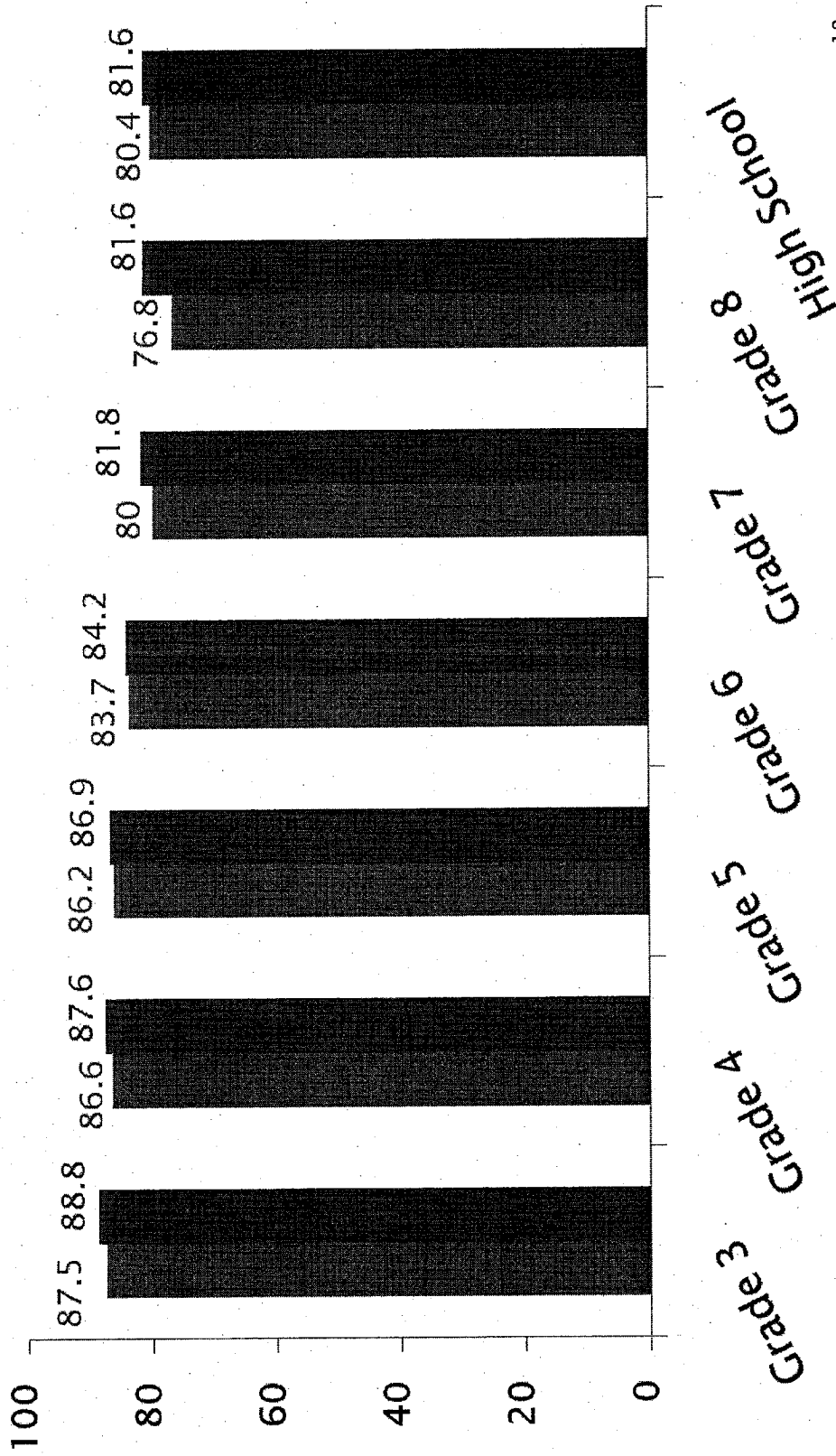


Math - Student Achievement by Grade

Percentage of students in the top three performance levels		
	2010	2011
3rd Grade	87.5%	88.8%
4th Grade	86.6%	87.6%
5th Grade	86.2%	86.9%
6th Grade	83.7%	84.2%
7th Grade	80.0%	81.8%
8th Grade	76.8%	81.6%
High School	80.4%	81.6%

Math - Student Achievement by Grade

■ 2010 ■ 2011

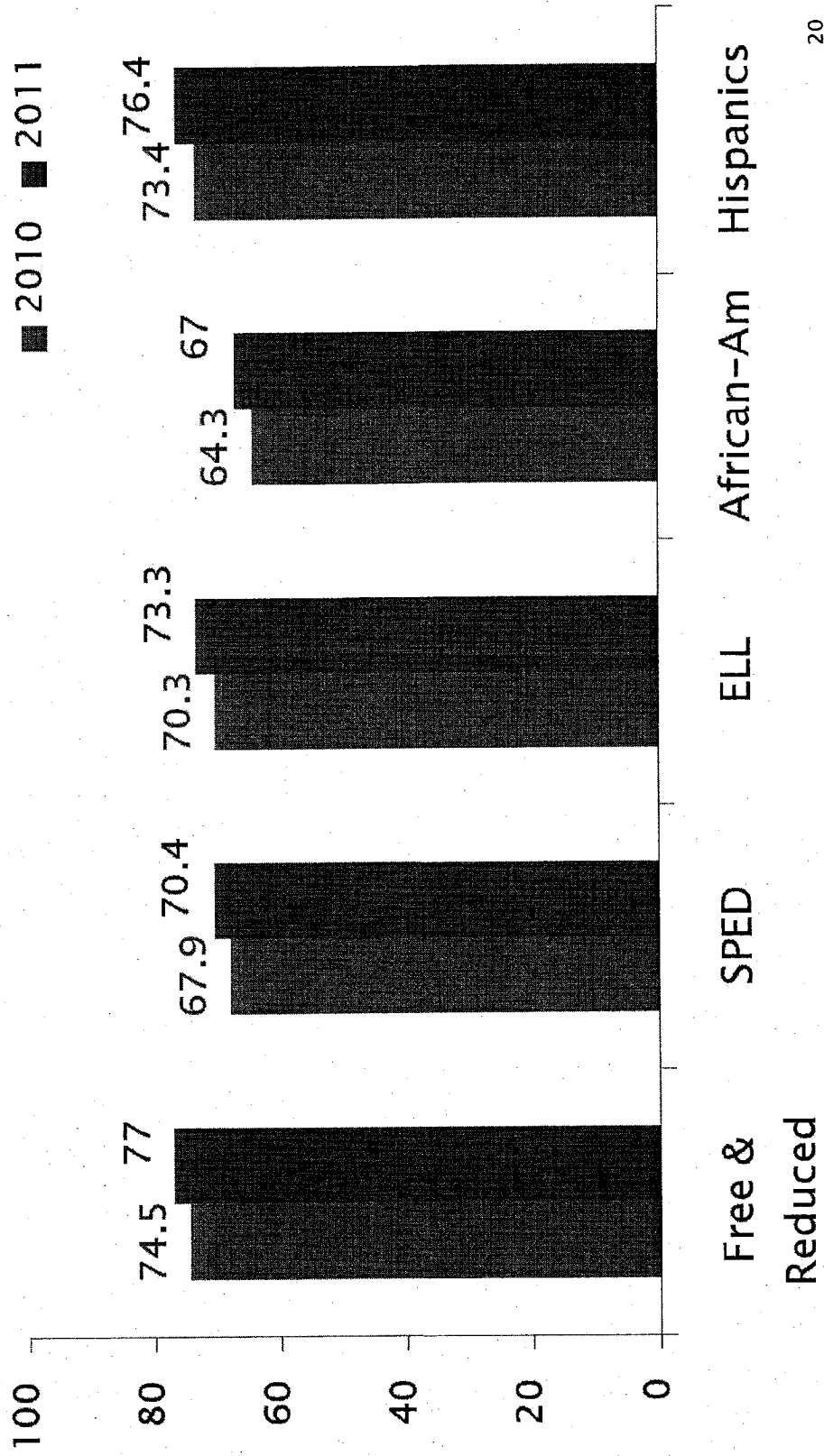


Math - Student Achievement by Subgroup

Percentage of student achievement in the top three performance levels

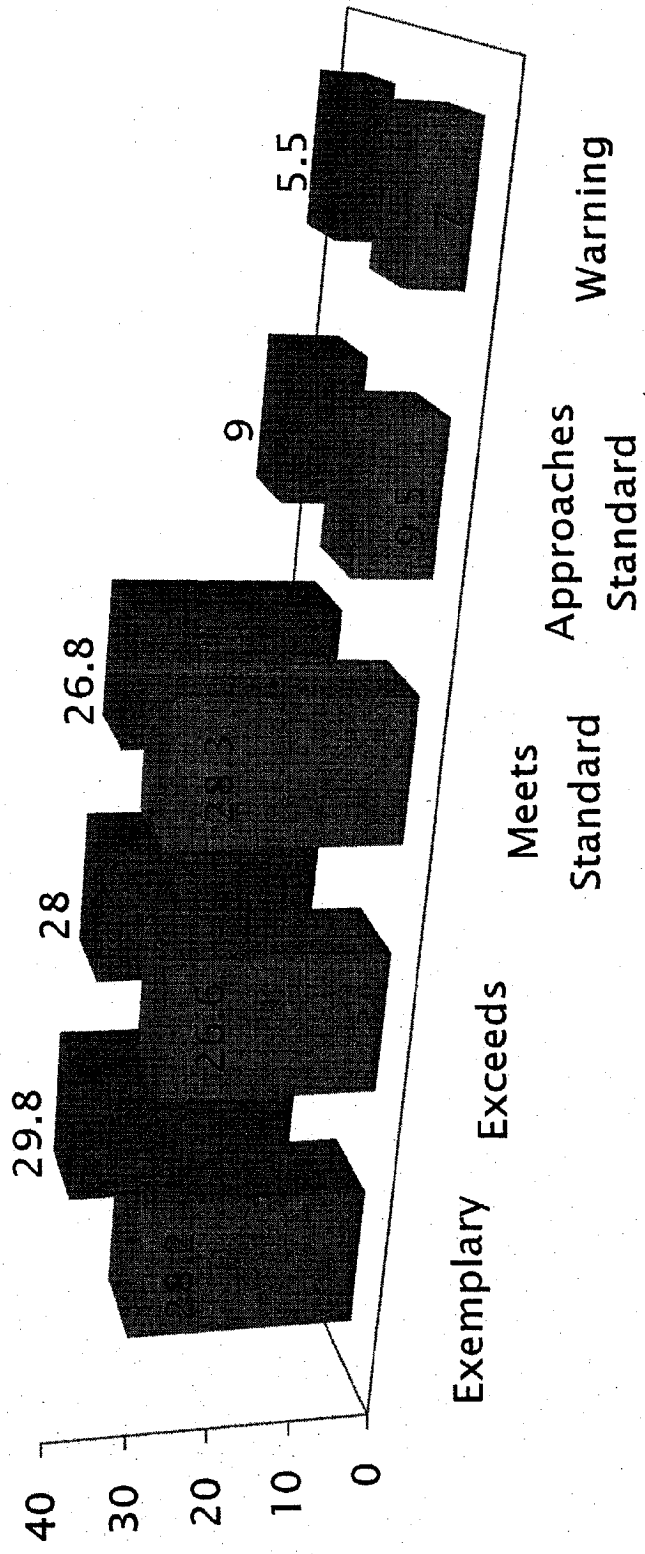
	2010	2011
Free & Reduced Lunch	74.5%	77.7%
Students with Disabilities	67.9%	70.4%
English Language Learners	70.3%	73.3%
African-Americans	64.3%	67.0%
Hispanics	73.4%	76.4%

Math-Student Achievement by Subgroup

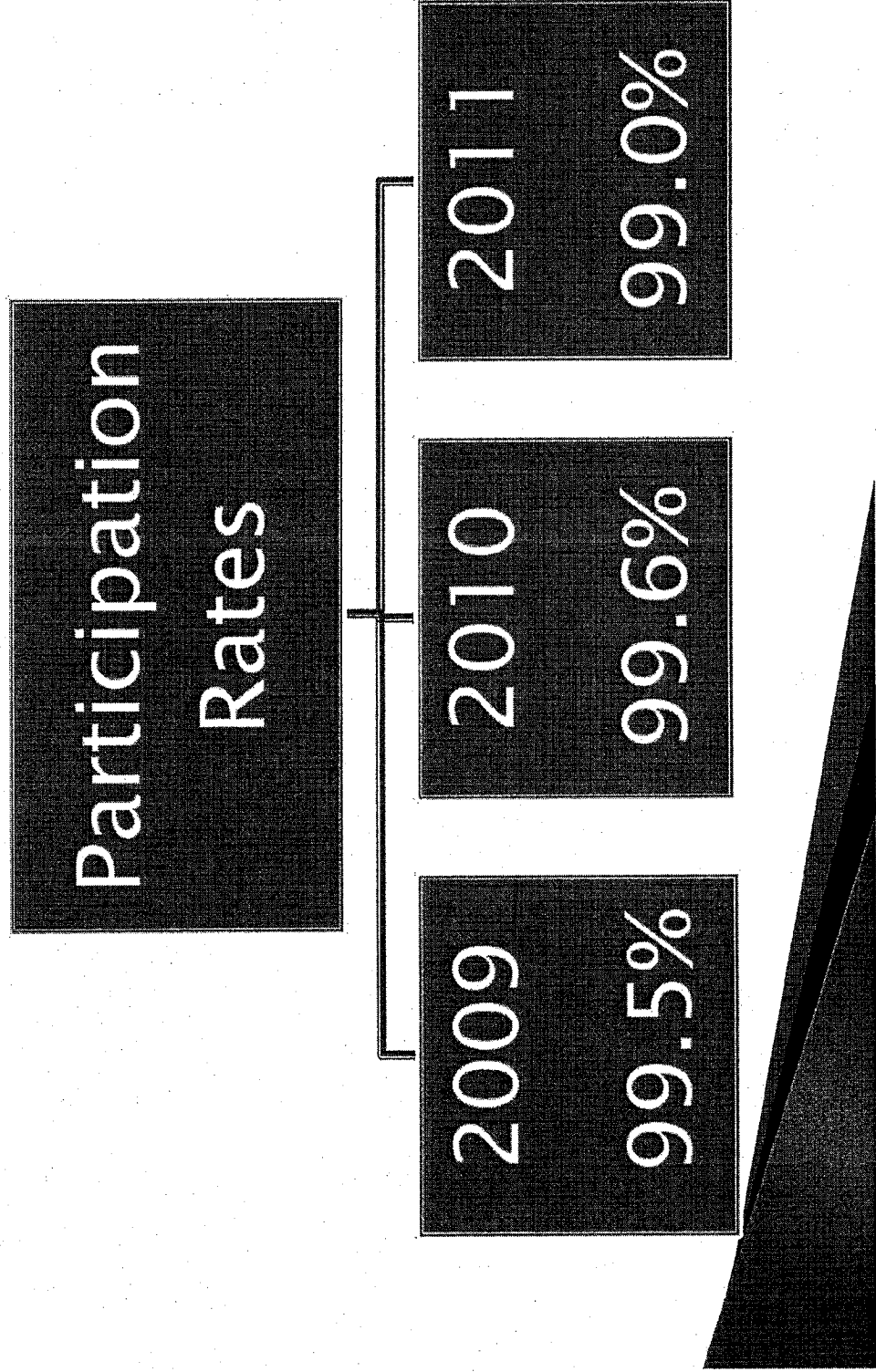


Math - Performance Levels

■ 2010 ■ 2011



Science



Science - Participation Rates for Groups

	2010	2011
All Students	98.6%	99.0%
Ethnic Groups	97.3%-98.8%	98.4%-99.2%
Free & Reduced Lunch	98.2%	98.6%
Students with Disabilities	96.3%	98.2%
English Language Learners	98.4%	98.4%

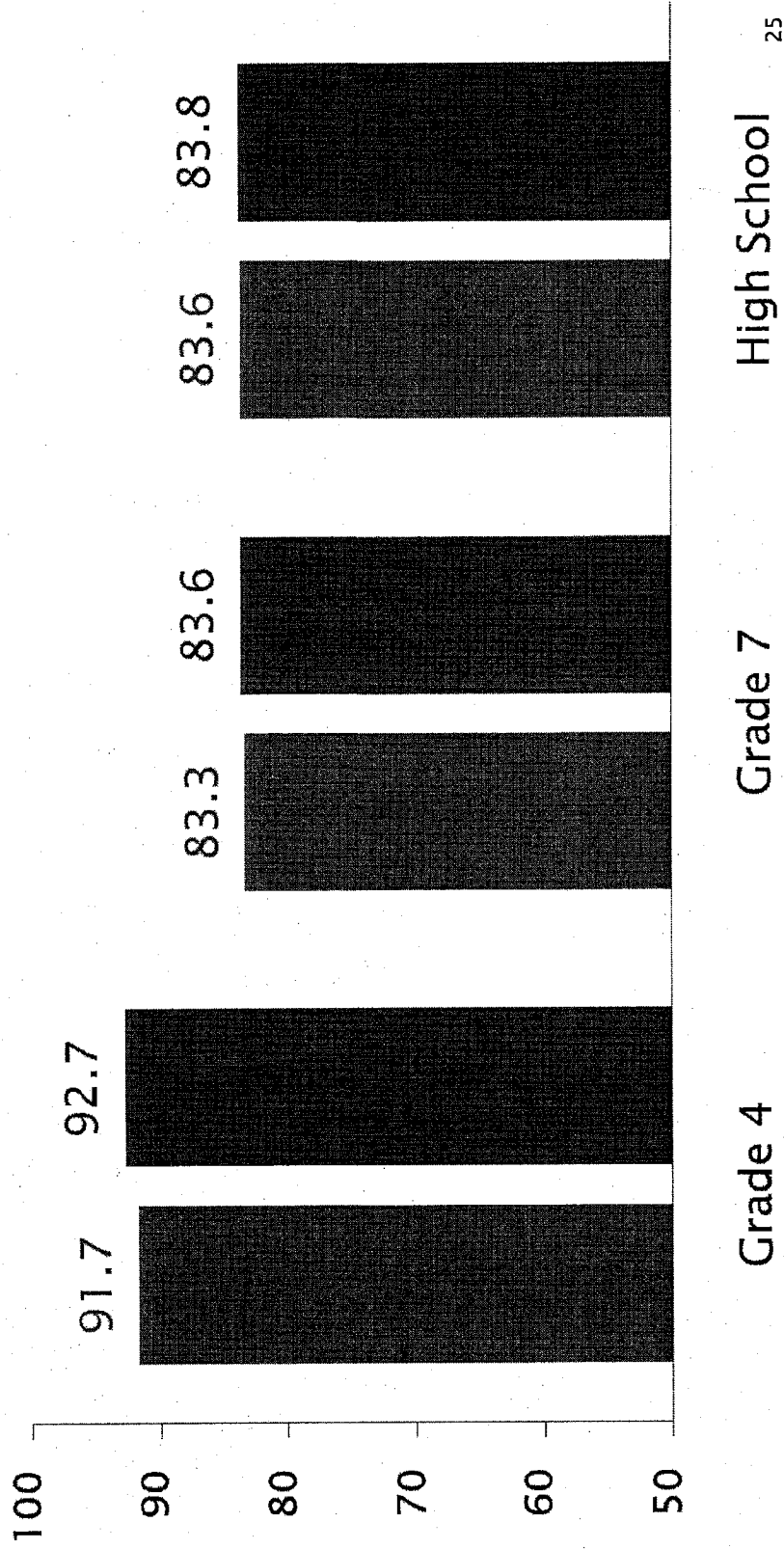
Science

Percentage of students in top three performance levels

	2010	2011
4 th Grade	91.7%	92.7%
7 th Grade	83.3%	83.6%
High School	83.6%	83.8%

Science-Student Achievement by Grade

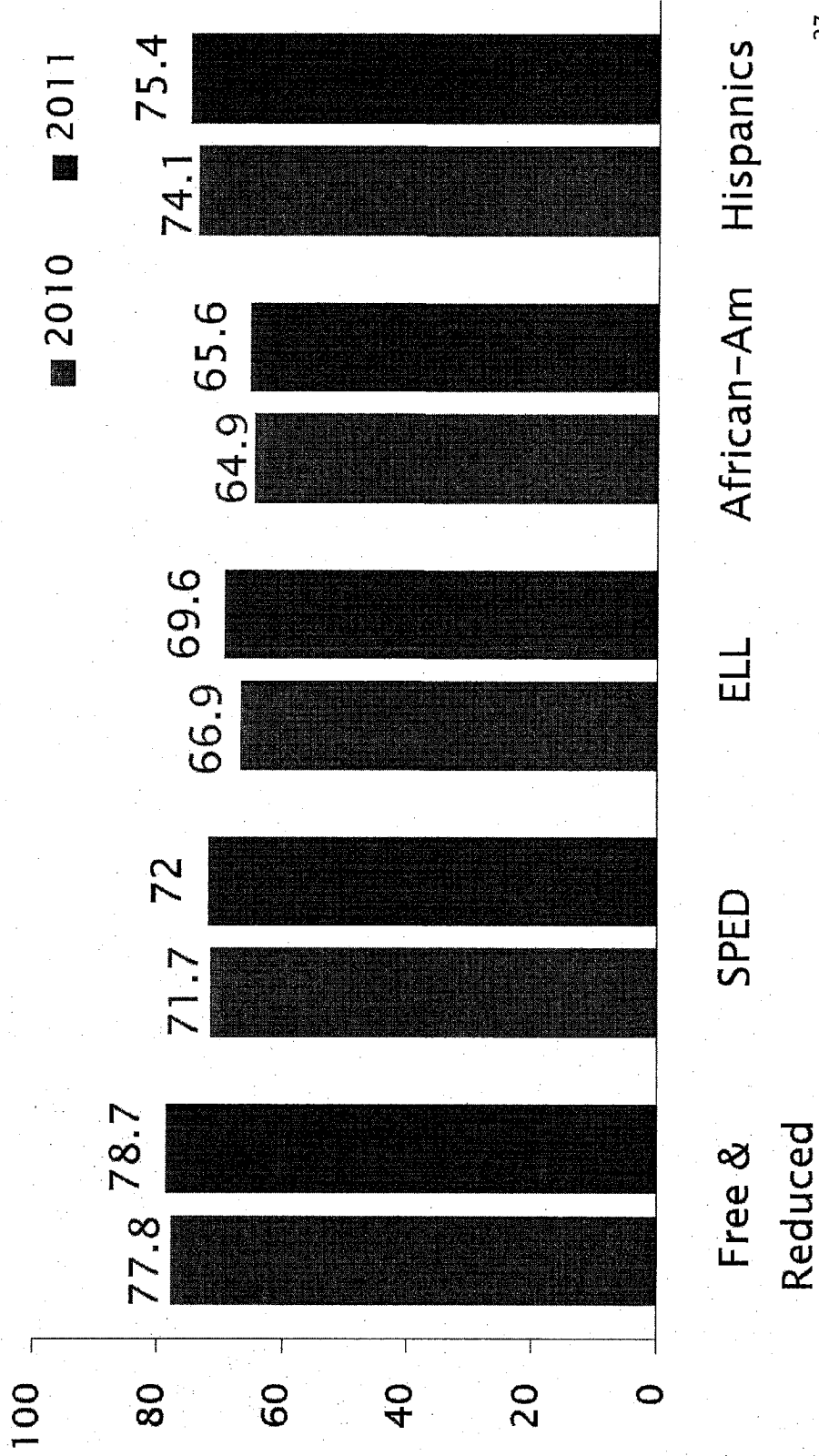
■ 2010 ■ 2011



Science - Student Achievement by Subgroup

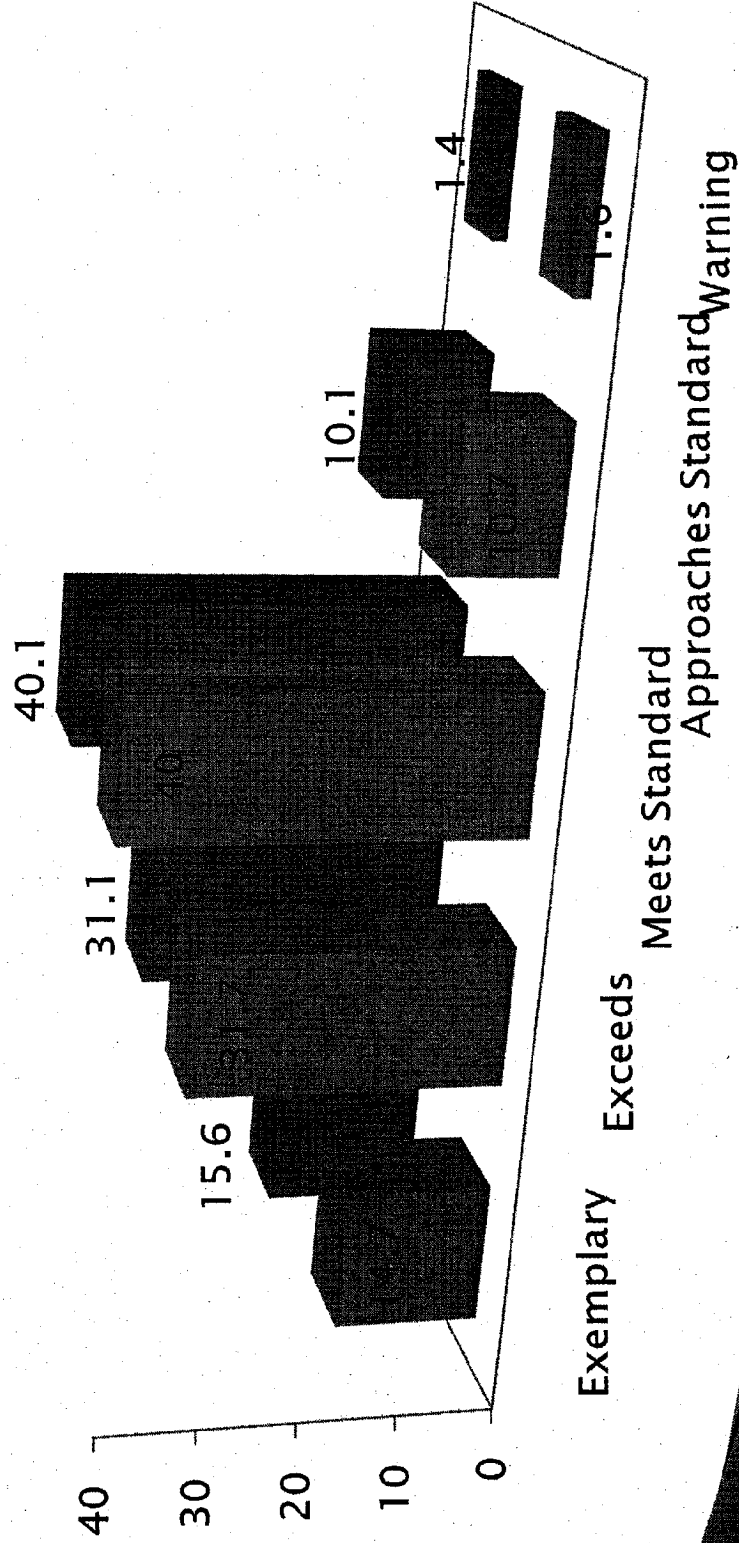
Percentage of students in the top three performance levels		
	2010	2011
Free & Reduced Lunch	77.8%	78.7%
Students with Disabilities	71.7%	72.0%
English Language Learners	66.9%	69.6%
African-Americans	64.9%	65.6%
Hispanics	74.1%	75.4%

Science-Student Achievement by Subgroup



Science - Performance Levels

■ 2010 ■ 2011

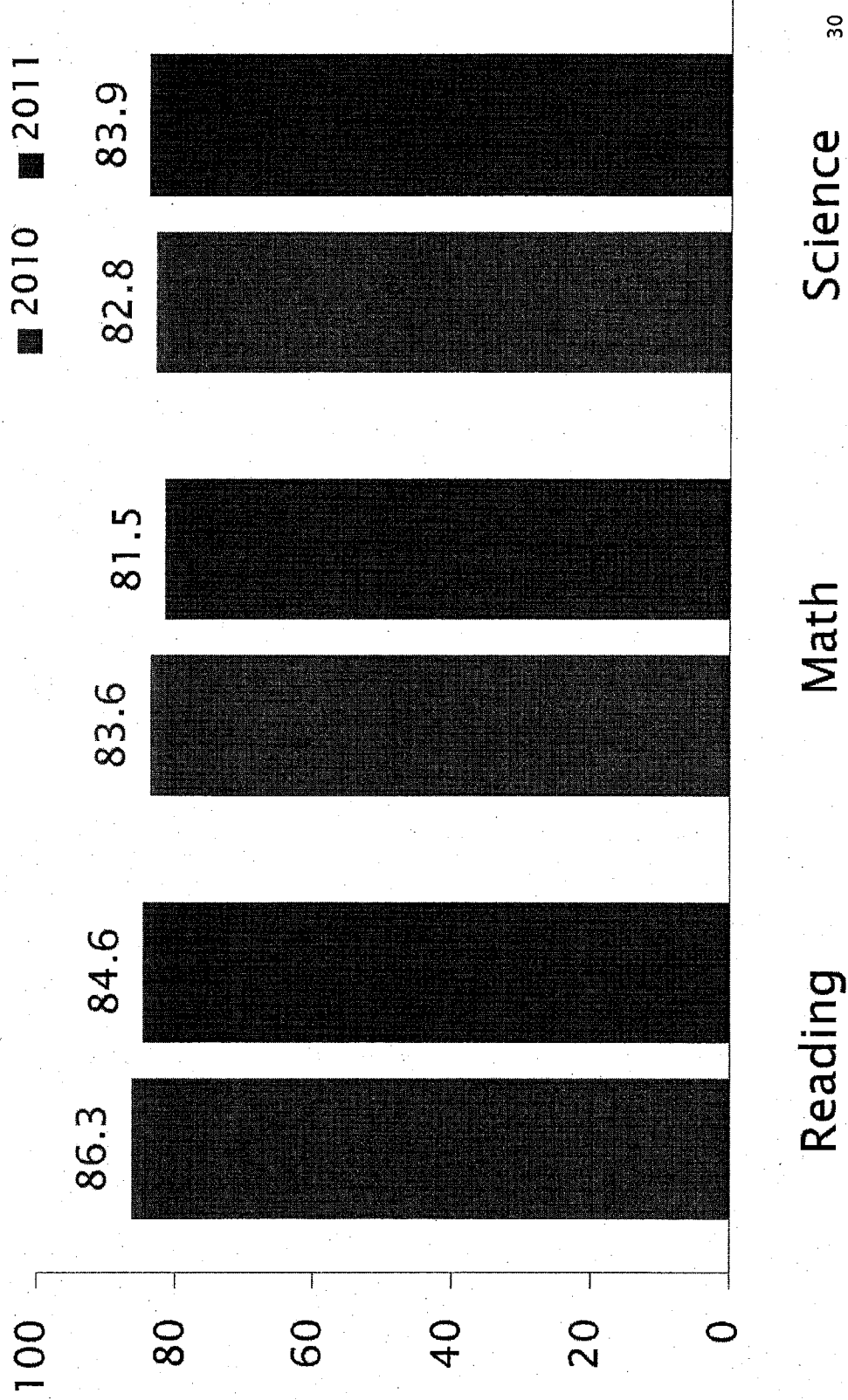


Alternate Assessment

Based on student's IEP;
commonly referred to as the 1%

	2010	2011
Reading	86.3%	84.6%
Math	83.6%	81.5%
Science	82.8%	83.9%

Alternate Assessment

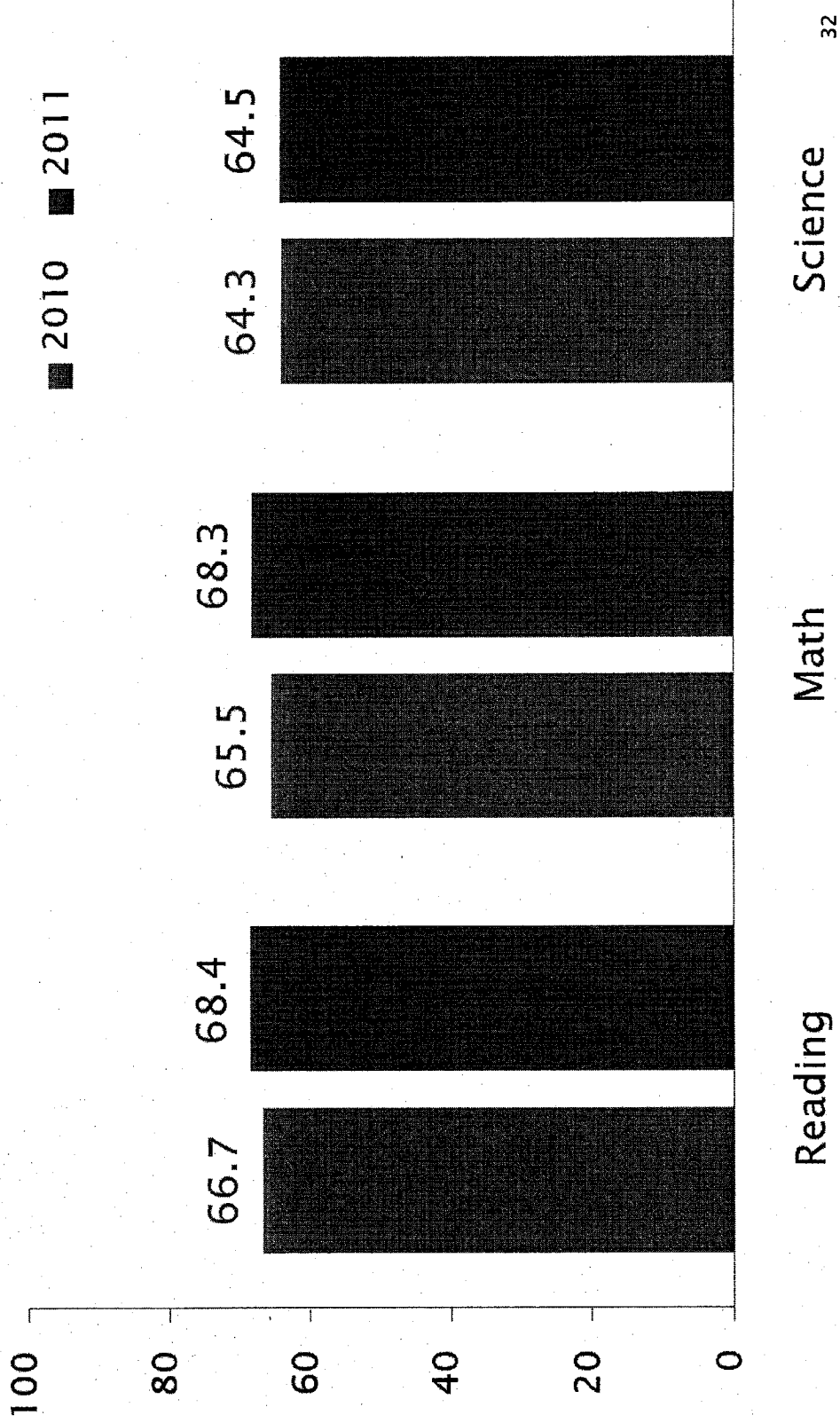


Kansas Assessment of Modified Measures (KAMM)

Based on grade level content standards;
commonly referred to as the 2%

	2010	2011
Reading	66.7%	68.4%
Math	65.5%	68.3%
Science	64.3%	64.5%

KAMM



Highly Qualified 2008-2009

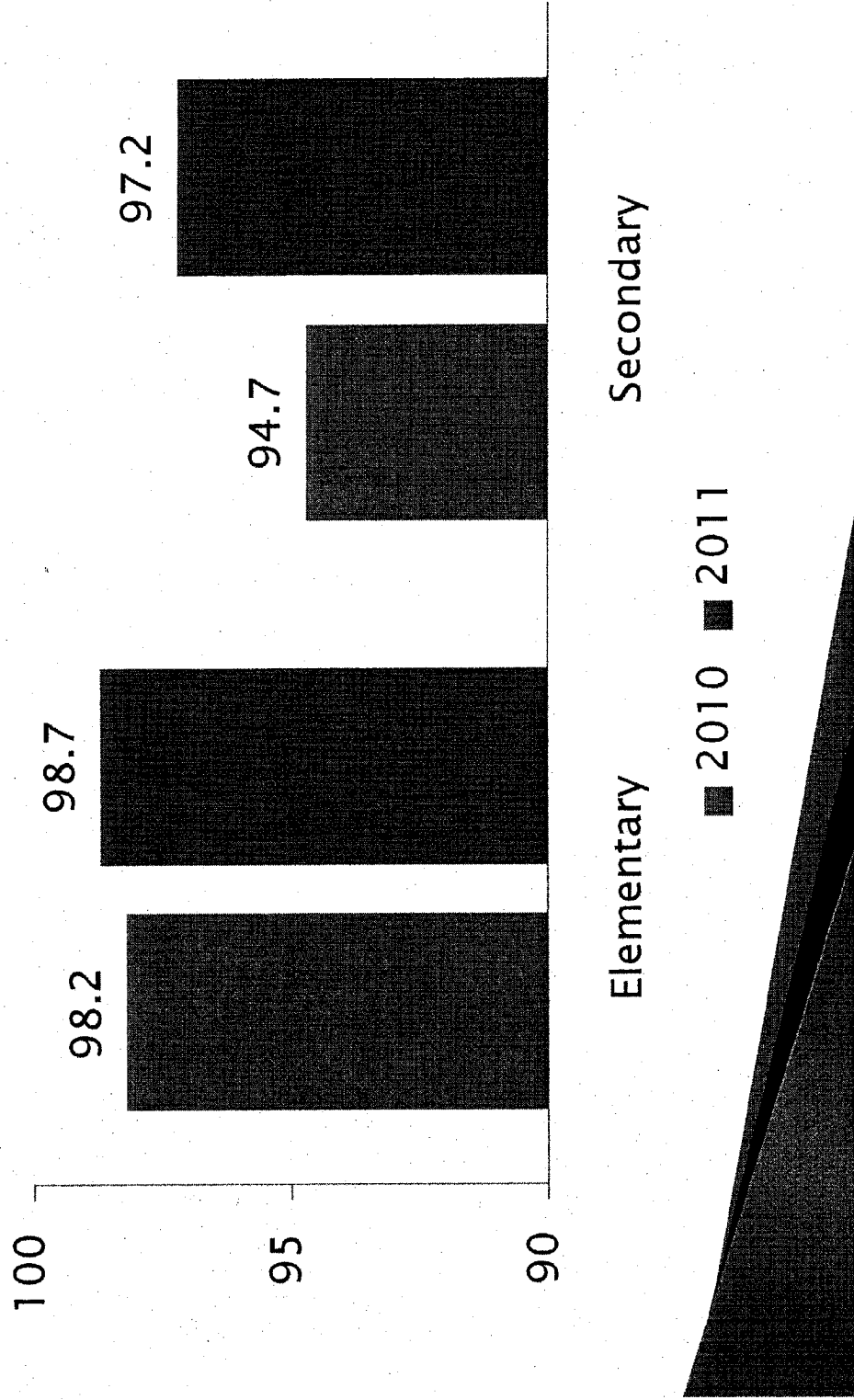
- ▶ To be highly qualified, a teacher must be “fully” licensed & must demonstrate subject matter competence.
- ▶ Competence is demonstrated by:
 - Content major, or
 - PRAXIS II content test, or
 - Rubric (content hours, content workshops, experience & other PD related to content area).

Highly Qualified Teachers

Percentage of core classes taught by highly qualified teachers

	2010	2011
Elementary Schools	98.2%	98.7%
Secondary Schools (middle, junior high and high schools)	94.7%	94.7%

Percent of Core Classes Taught by Highly Qualified Teachers

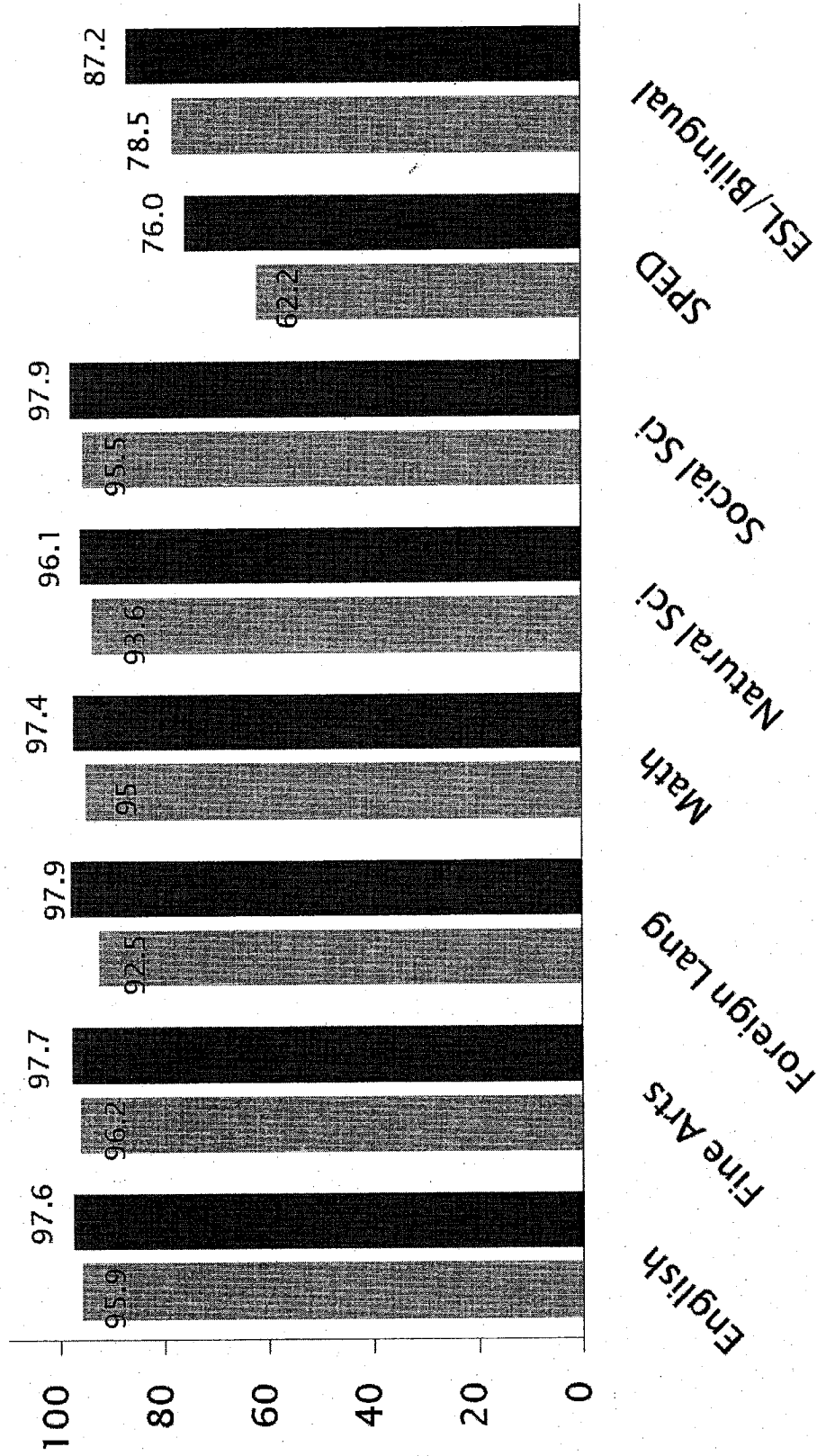


Percent of Highly Qualified Teachers

	2010	2011
English/LA/Reading	95.9%	97.6%
Fine Arts: Music, Art, Theater	96.2%	97.7%
Foreign Language	92.6%	97.9%
Math	95.0%	97.4%
Natural Science	93.6%	96.1%
Social Studies, History, Government, Geography, Economics	95.5%	97.9%
Special Education	62.2%	76.0%
ESL/Bilingual	78.5%	87.2%

% HQ Teachers

■ 2010 ■ 2011



Other Measures

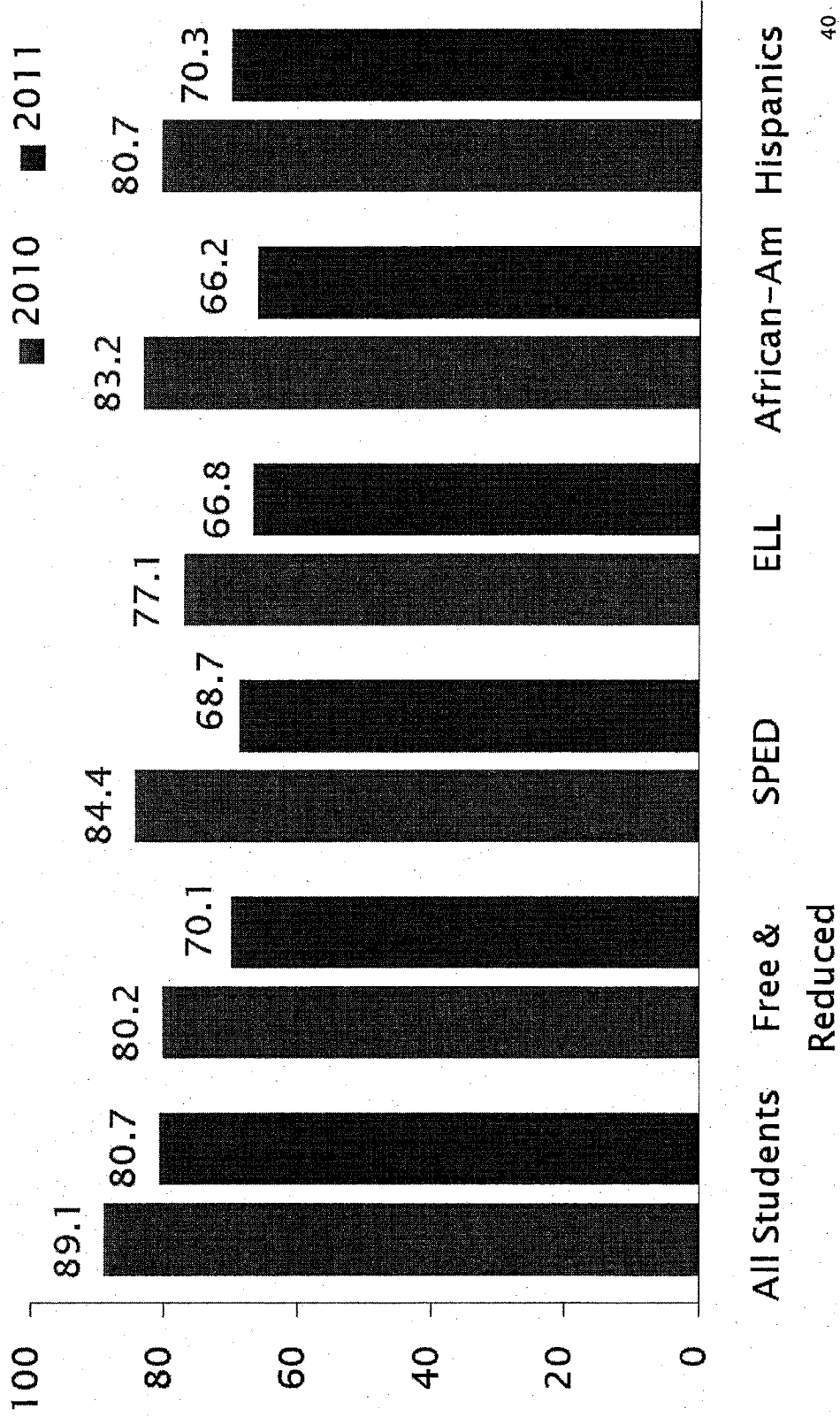
- ▶ Graduation Rate (H.S. & districts)
 - New adjusted cohort formula
 - GED is not included
 - At least 80% or
 - If $\geq 50\%$ but $< 80\%$, 3% more
 - If $< 50\%$, 5% more than previous year

- ▶ Attendance Rate
 - Elementary school requirement
 - 90% or improvement over last year

Graduation Rate

	AYP graduation	2011
		4-yr. adjusted cohort graduation formula
		2010
All Students	89.1%	80.7%
Free & Reduced Lunch	80.2%	70.1%
SPED	84.4%	68.7%
ELL	77.1%	66.8%
African-American	83.2%	66.2%
Hispanics	80.7%	70.3%

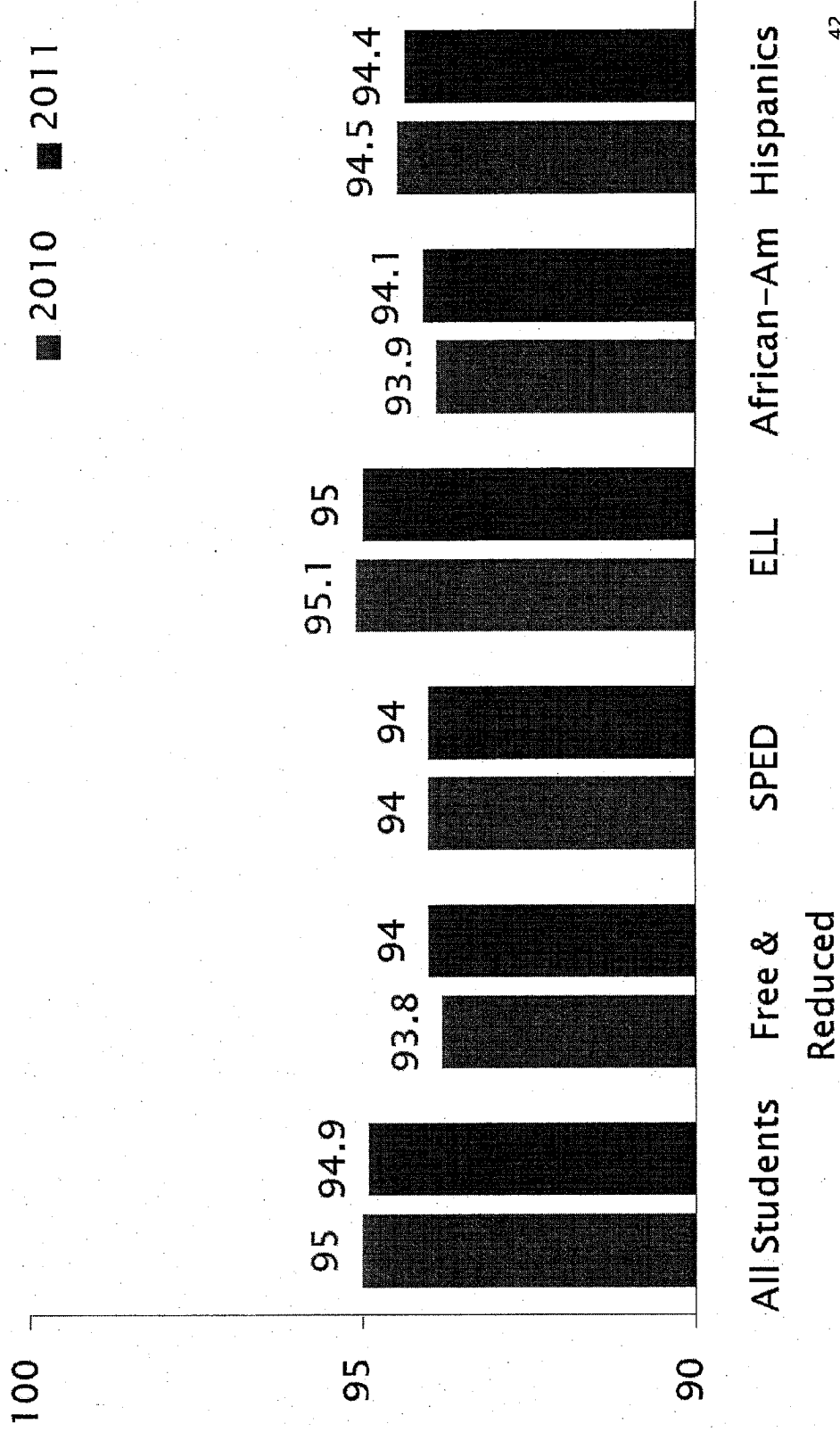
Graduation Rate



Attendance Rate

	2010	2011
All Students	95.0%	94.9%
Free & Reduced Lunch	93.8%	94.0%
SPED	94.0%	94.0%
ELL	95.1%	95.0%
African-American	93.9%	94.1%
Hispanics	94.5%	94.4%

Attendance Rate

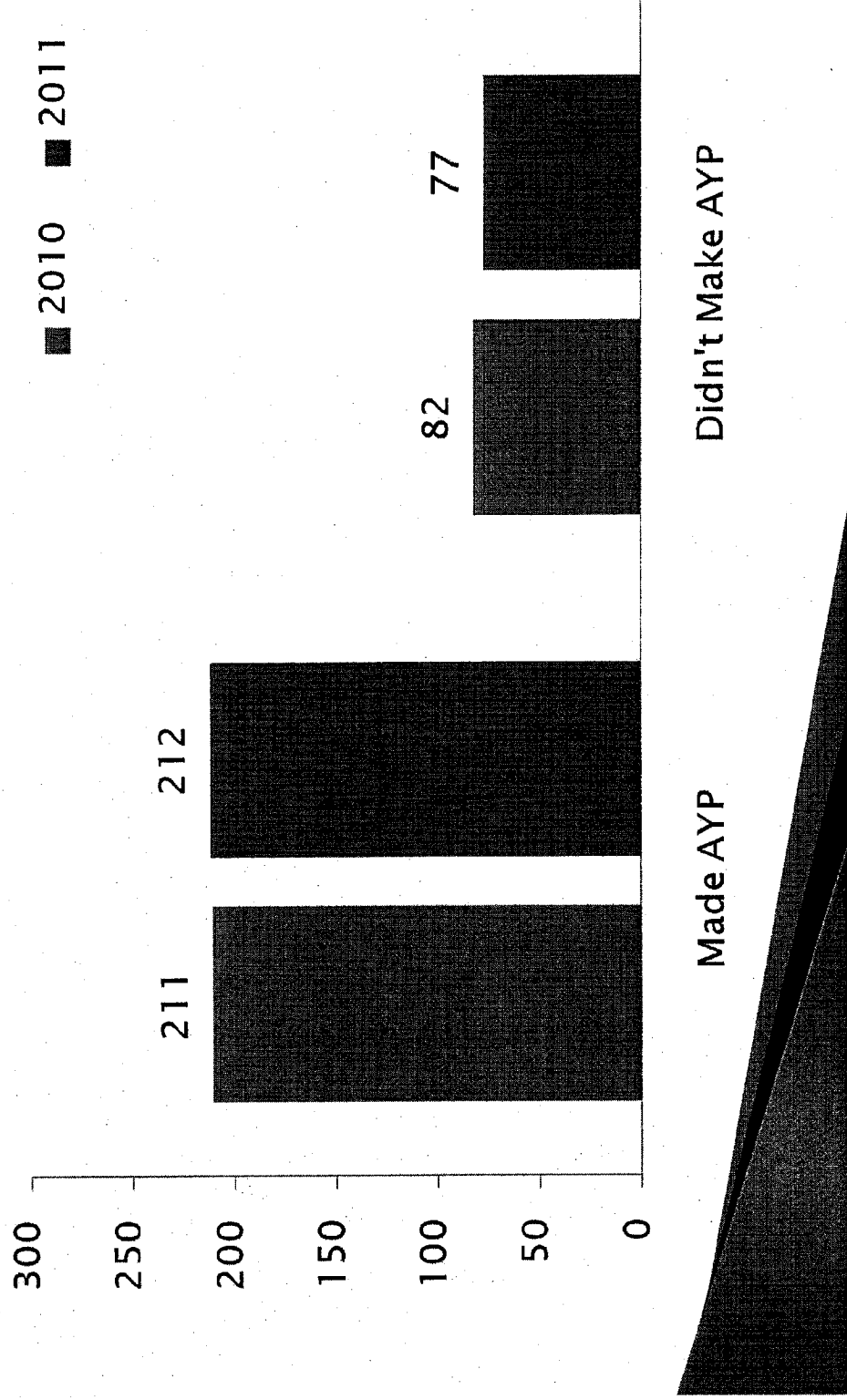


AYP State Profile

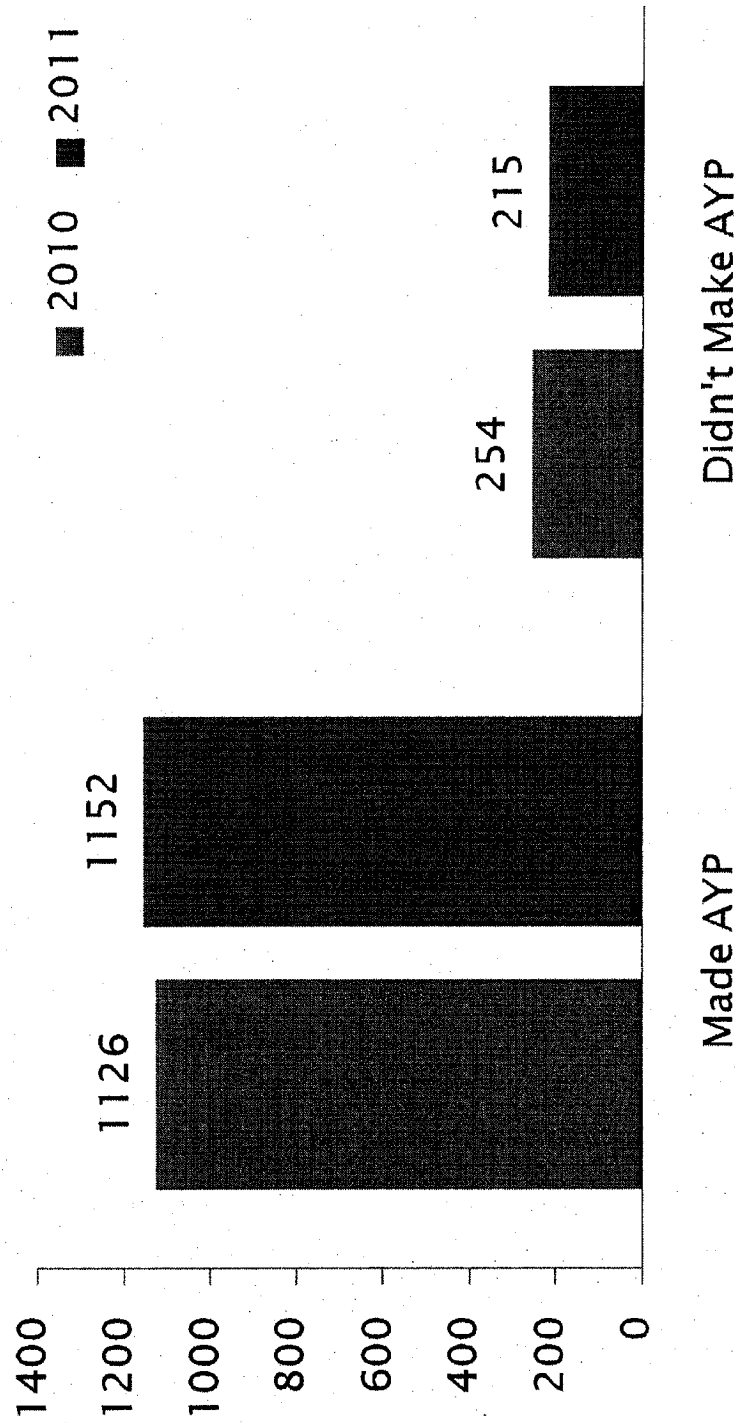
	Made AYP		Didn't Make AYP	
	2010	2011	2010	2011
Public Districts	211	212	82	77
	72.0%	73.3%	28.0%	26.6%
Public Schools	1,126	1,152	254	215
	81.6%	84.3%	18.4%	15.7%

1,380 public schools in 2009-2010; 1,367 public schools in 2010-2011
 293 school districts in 2009-2010; 289 school districts in 2010-2011

AYP State Profile - Districts



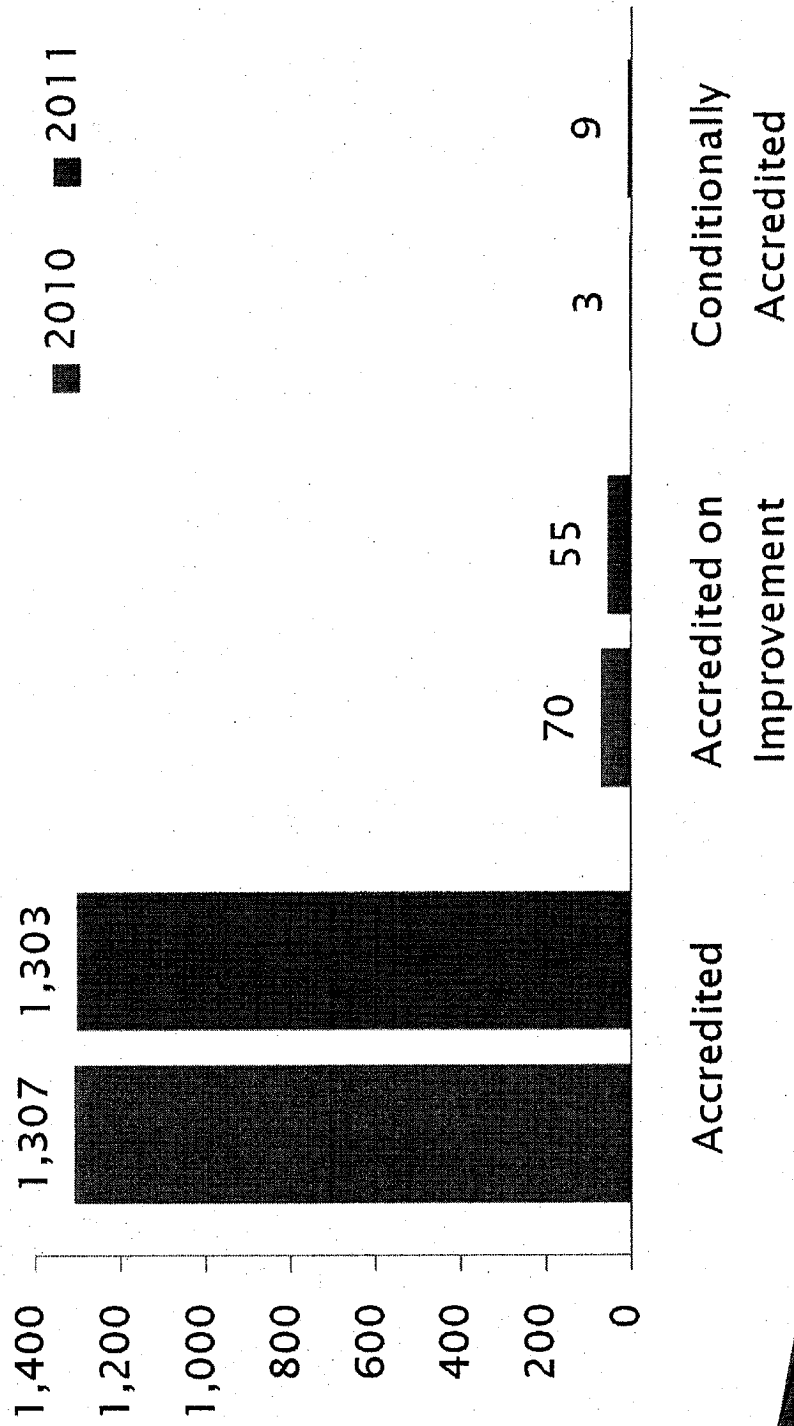
AYP State Profile - Schools



Quality Performance Accreditation

	2010	2011
Accredited	1,310 94.9%	1,303 95.3%
Accredited on Improvement	67 4.9%	55 4.0%
Conditionally Accredited	3 0.2%	9 .7%

Quality Performance Accreditation



Schools with 100% of students in the all group meeting or exceeding the standard

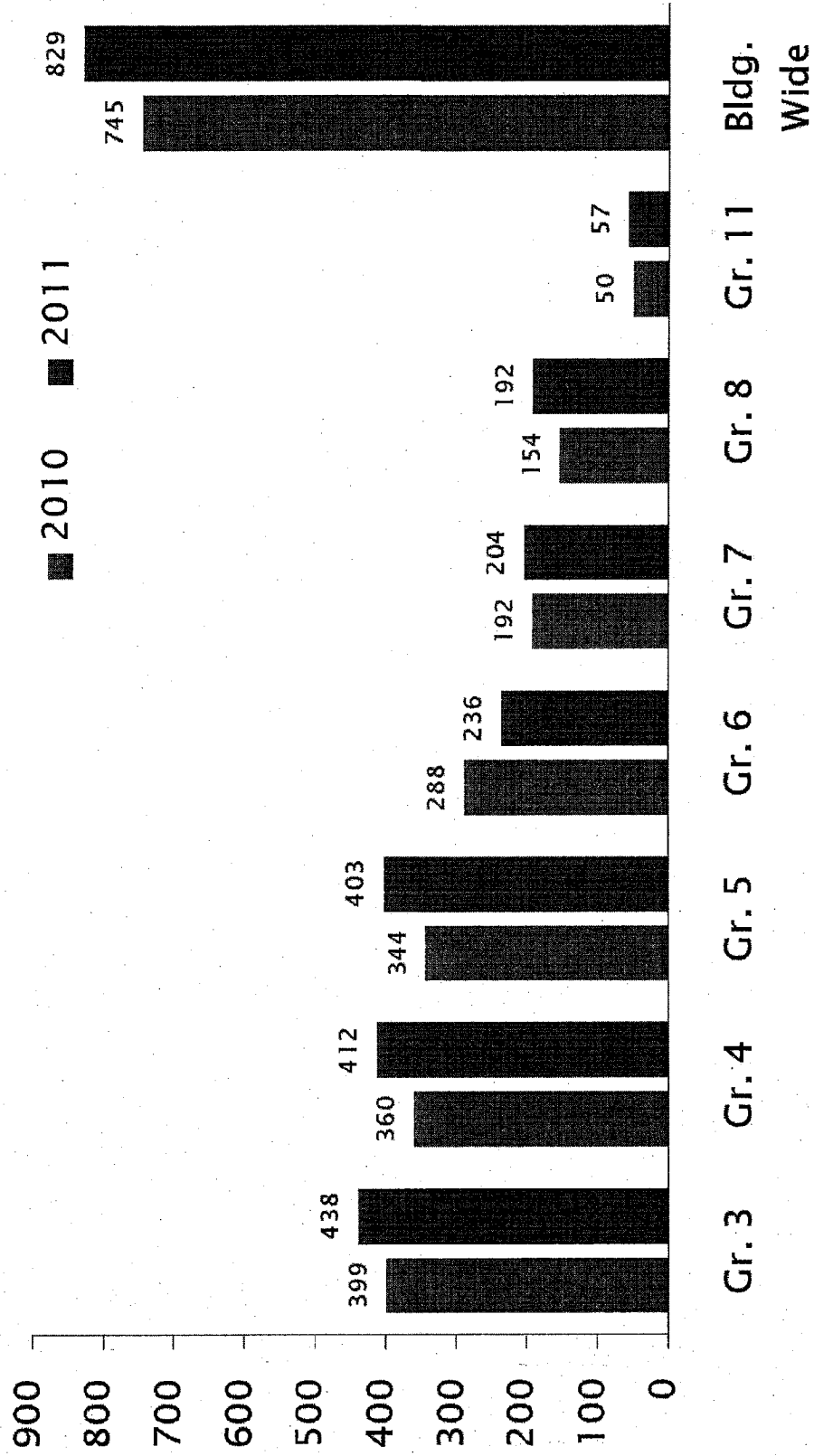
	2010	2011
Math	39	60
Reading	48	55
Both Math & Reading	17	22
Science	274	293

Total number of public schools = 1,367 in 2011

Standard of Excellence (SOE)

- ▶ SOE awards given at grade & building levels
- ▶ Must make AYP in the “All Students” group
- ▶ Subgroups are not considered
- ▶ Must have an “Accredited” QPA status
- ▶ Depending on subject area, must have a minimum percentage of students in the “Exemplary” level and not more than a certain percentage in the “Academic Warning” level

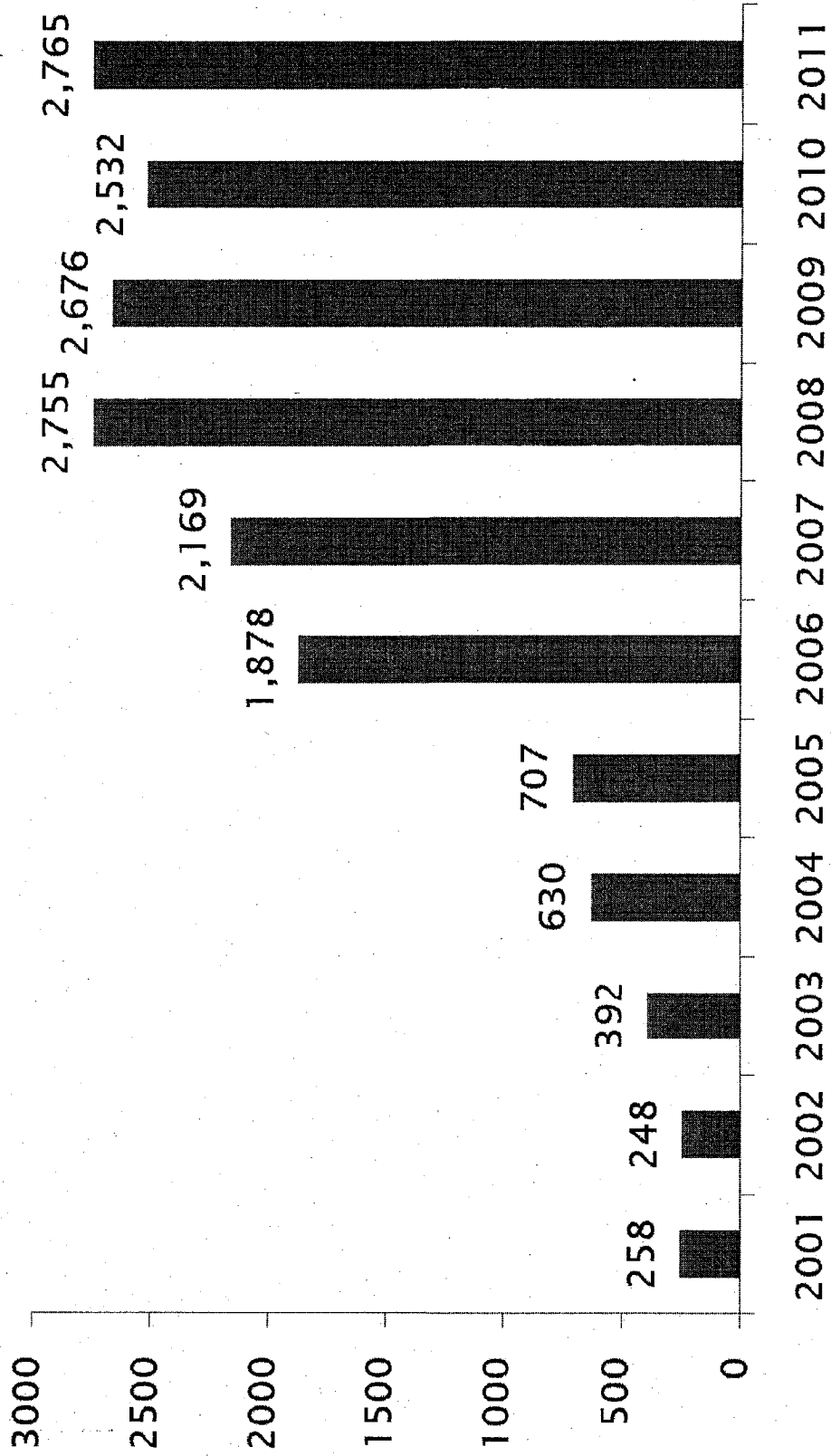
Standard of Excellence - Math



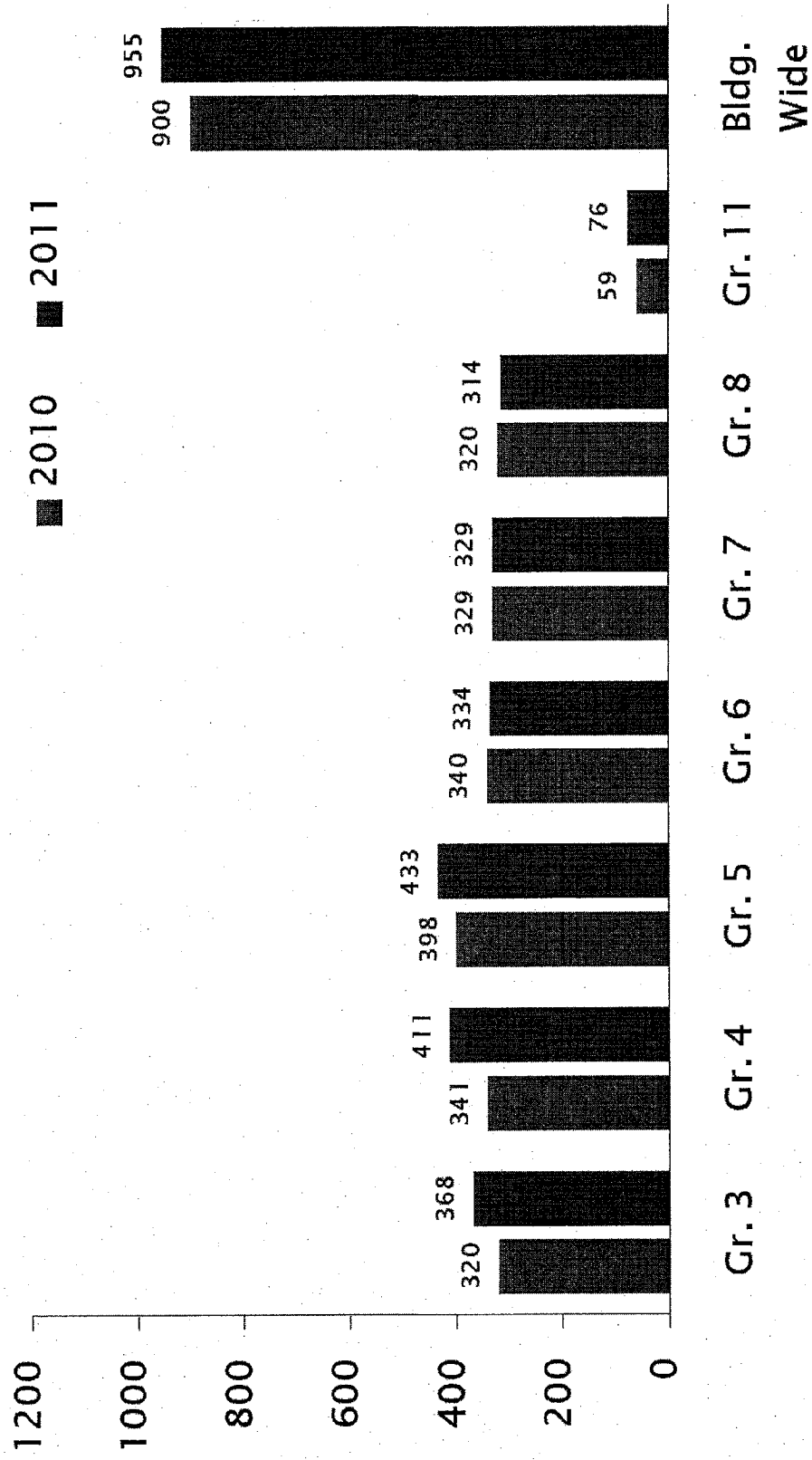
Standard of Excellence – Math

	2010	2011
Building Wide	745	829
Grade 3	399	438
Grade 4	360	412
Grade 5	344	403
Grade 6	288	230
Grade 7	192	204
Grade 8	154	192
Grade 11	50	57
Total Volume:	2,532	2,765

Standard of Excellence - Math - Total Volume 2000-2010



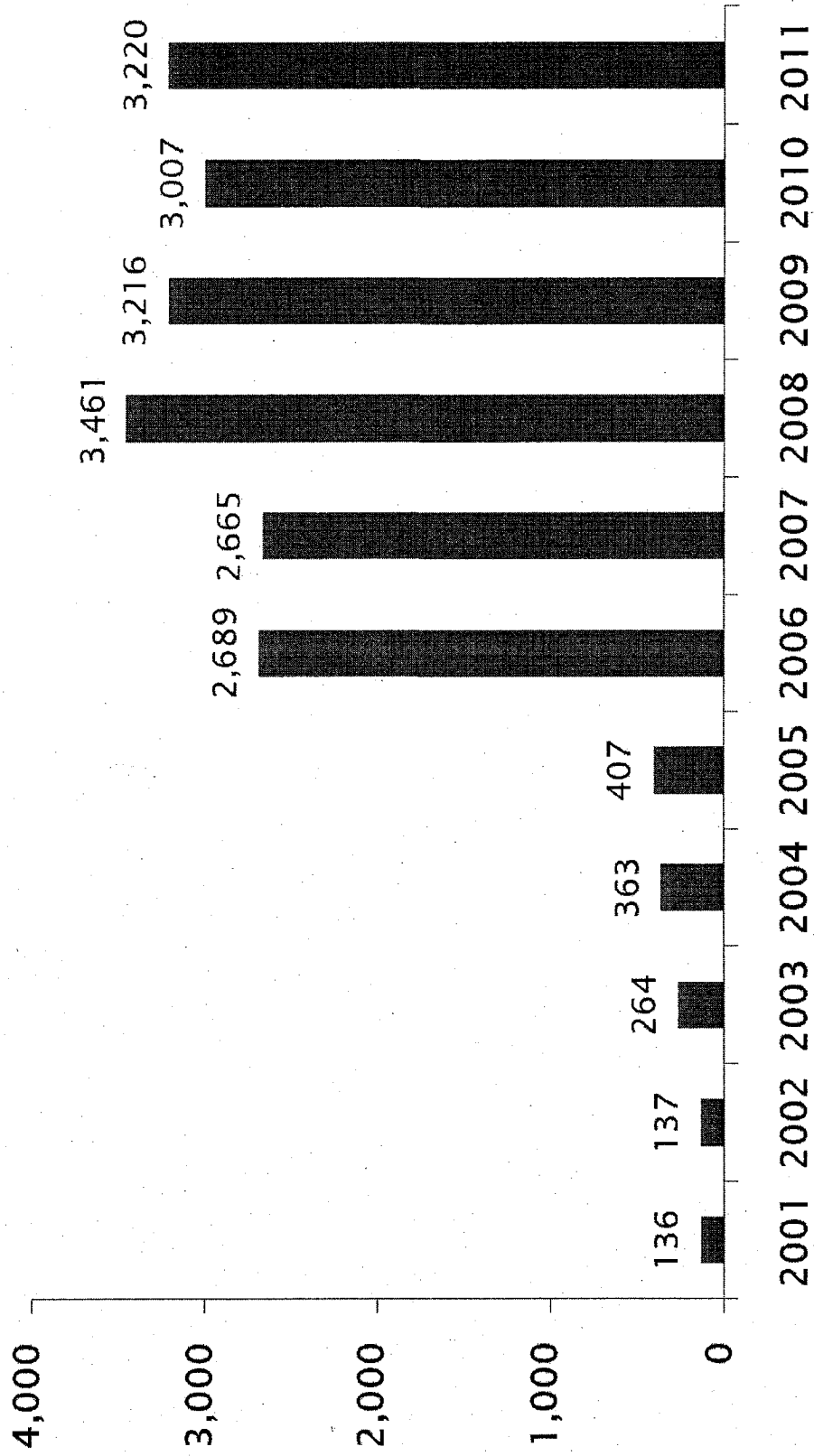
Standard of Excellence - Reading



Standard of Excellence – Reading

	2009	2011
Building Wide	900	955
Grade 3	320	368
Grade 4	341	411
Grade 5	398	433
Grade 6	340	334
Grade 7	329	329
Grade 8	320	314
Grade 11	59	76
Total Volume:	3,007	3,220

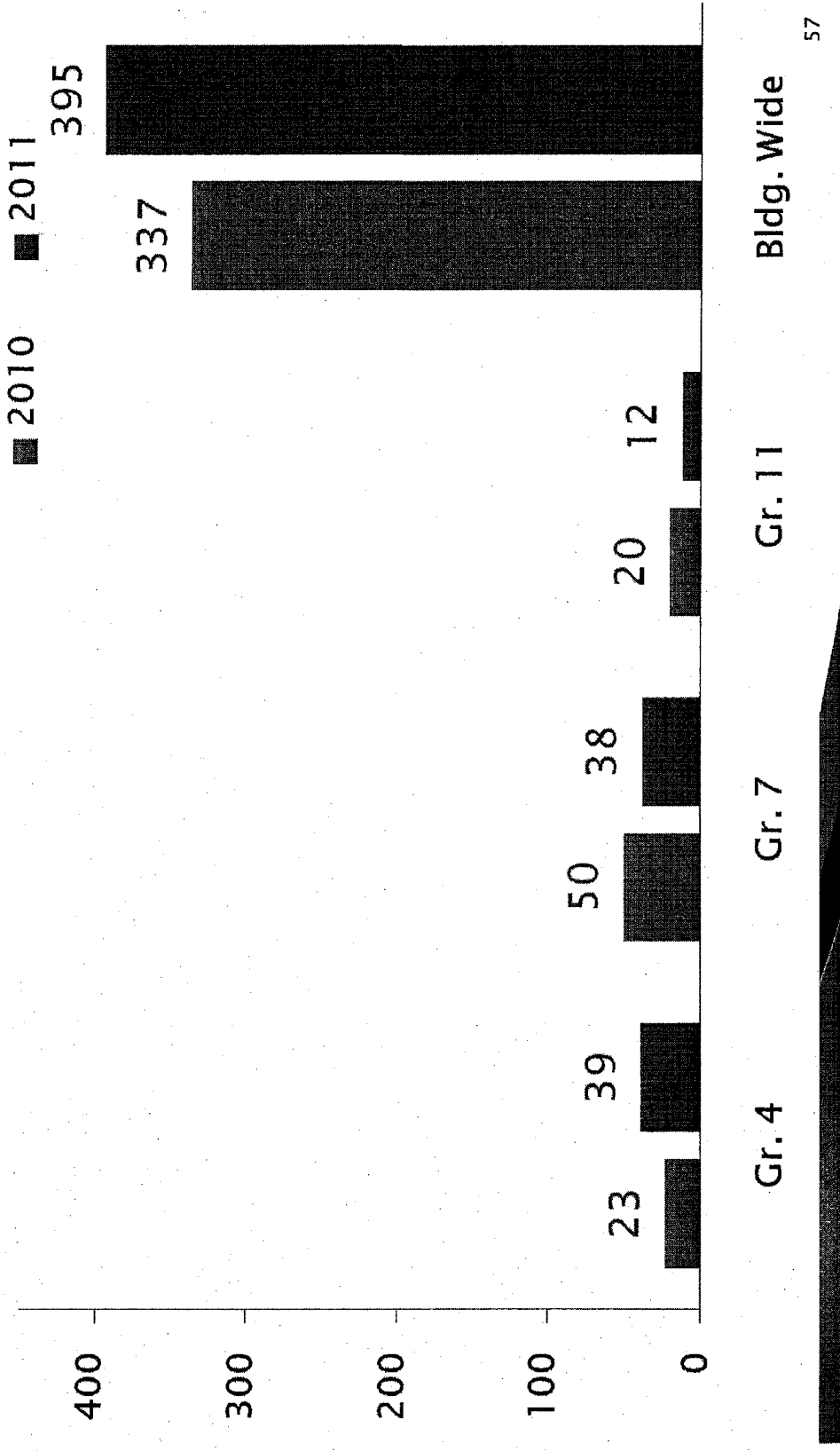
Standard of Excellence - Reading - Total Volume 2000-2010



Standard of Excellence – Science

	2010	2011
Building Wide	337	395
Grade 4	23	39
Grade 7	50	38
Grade 11	20	12
Total Volume:	430	484

Standard of Excellence - Science



Summary – The Good News

- ▶ For the 11th year, the percent of students at standard or above in reading, math, and science increased.
- ▶ *At about 30%, for both reading and math, the students achieving Exemplary became the largest of the performance groups.*
- ▶ Subgroup improvements, in both reading and math, were very robust, with ELs and African-Americans making 5 and 4 pt. gains in reading.
- ▶ 8th graders moved nearly 5 pts. higher in math.
- ▶ Participation rates remain very close to 100%.
- ▶ The percent of highly-qualified teachers teaching secondary core classes rose 3 pts. to 97%.

Summary - Concerns

- ▶ With the new graduation formula, graduation rates fell substantially for all groups, but especially for minority males and Students with Disabilities.
- ▶ The number of buildings which are threatened with losing their accreditation went up from 3 to 9.
- ▶ While Science performance increased, the proportion of students at Exemplary is relatively small at 16%, and the increases for African-American and EL students were not as large as in other subjects.
- ▶ While there were large improvements in the % of HQ teachers in SPED and ESL, the percentages are still relatively low at 76 and 87%.
- ▶ The percentage of students receiving free & reduced lunches has risen sharply for the last 3 years and now is at 47% of state enrollments.