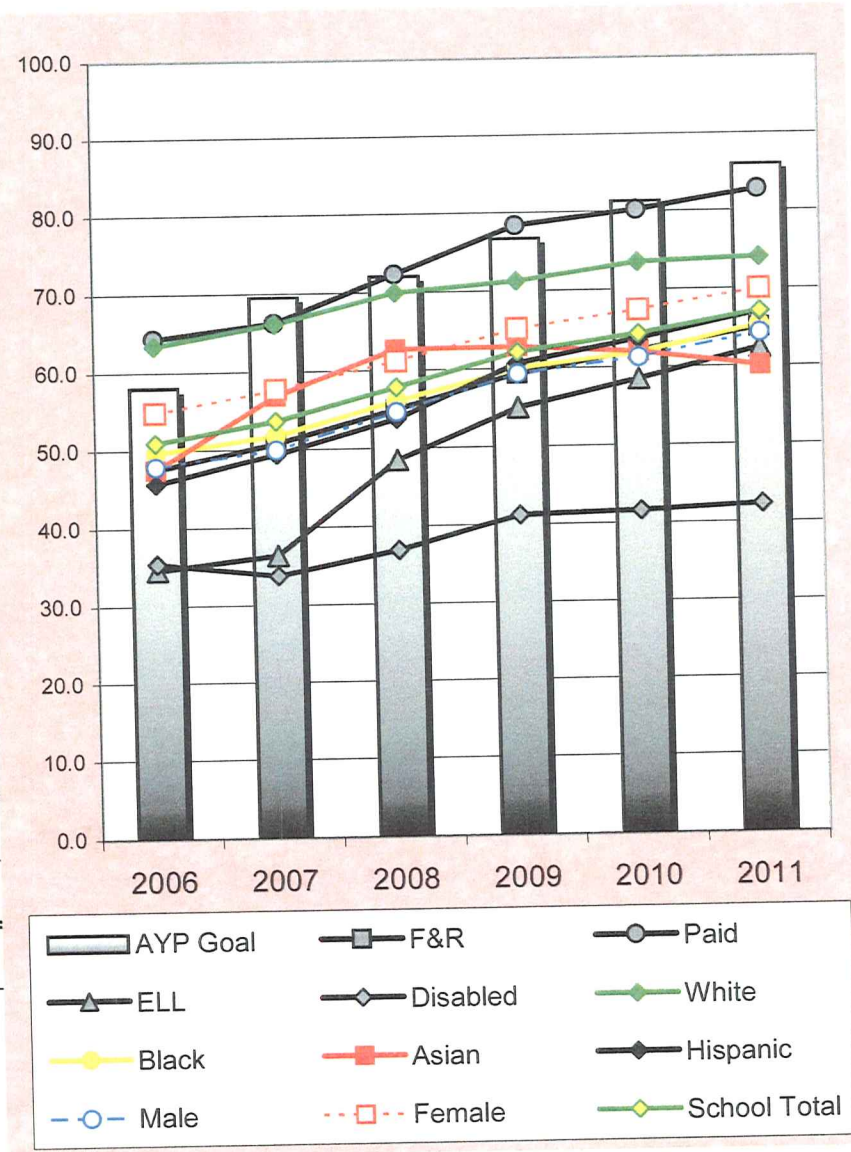


Kansas City, KS Public Schools

Percent of Students At or Above Proficiency on Kansas Reading Assessment

	2006	2007	2008	2009	2010	2011
AYP Goal	58.0	69.5	72.0	76.7	81.3	86.0
F&R	47.5 7348	50.8 7429	55.0 7660	59.4 7784	62.1 8259	65.0 8377
Paid	64.3 1938	66.2 1720	72.3 1540	78.4 1346	80.3 1139	82.8 1121
ELL	34.6 1998	36.4 1866	48.5 2594	55.0 2743	58.5 3063	62.4 3205
Disabled	35.4 1180	33.8 1241	36.9 1340	41.2 1437	41.6 1520	42.3 1502
White	63.4 1684	66.1 1584	70.0 1525	71.3 1488	73.6 1396	74.1 1316
Black	49.7 4350	51.8 4211	56.1 4097	60.1 40	61.9 3836	65.3 3719
Asian	47.5 307	56.9 279	62.7 284	62.8 317	62.0 332	60.1 371
Hispanic	45.7 2896	49.4 3019	53.8 3244	60.7 3412	63.7 3700	67.0 3918
Male	47.9 4711	50.0 4650	54.7 4722	59.4 4627	61.3 4720	64.3 4815
Female	54.8 4575	57.7 4499	61.2 4478	65.1 4503	67.4 4678	70.0 4683
School Total	51.0	53.7	57.9	62.2	64.3	67.1
Number Tested	9286	9149	9200	9130	9398	9498

Small font numbers for each group indicate group size.
Results are not reported for student groups smaller than 10 members.



PLAINTIFFS'
EX. 111