

FORESIGHT 2020

A 10-Year Strategic Agenda for the State's Public Higher Education System

College Readiness

First in Education the Kansas Way
Dr. Andy Tompkins, President and
CEO



PLAINTIFFS'
EX. 165

KBOR00003

FORESIGHT 2020

A 10-Year Strategic Agenda for the State's Public Higher Education System

What is our national goal for adults with a credential, associate, or bachelor degree?

- ★ Current number of Kansans with associate or bachelor degrees = 41%
- ★ National goal by 2020 = 60%

★ LEADING HIGHER EDUCATION ★

FORESIGHT 2020

A 10-Year Strategic Agenda for the State's Public Higher Education System

High School Graduates Meeting ACT College Readiness Benchmarks

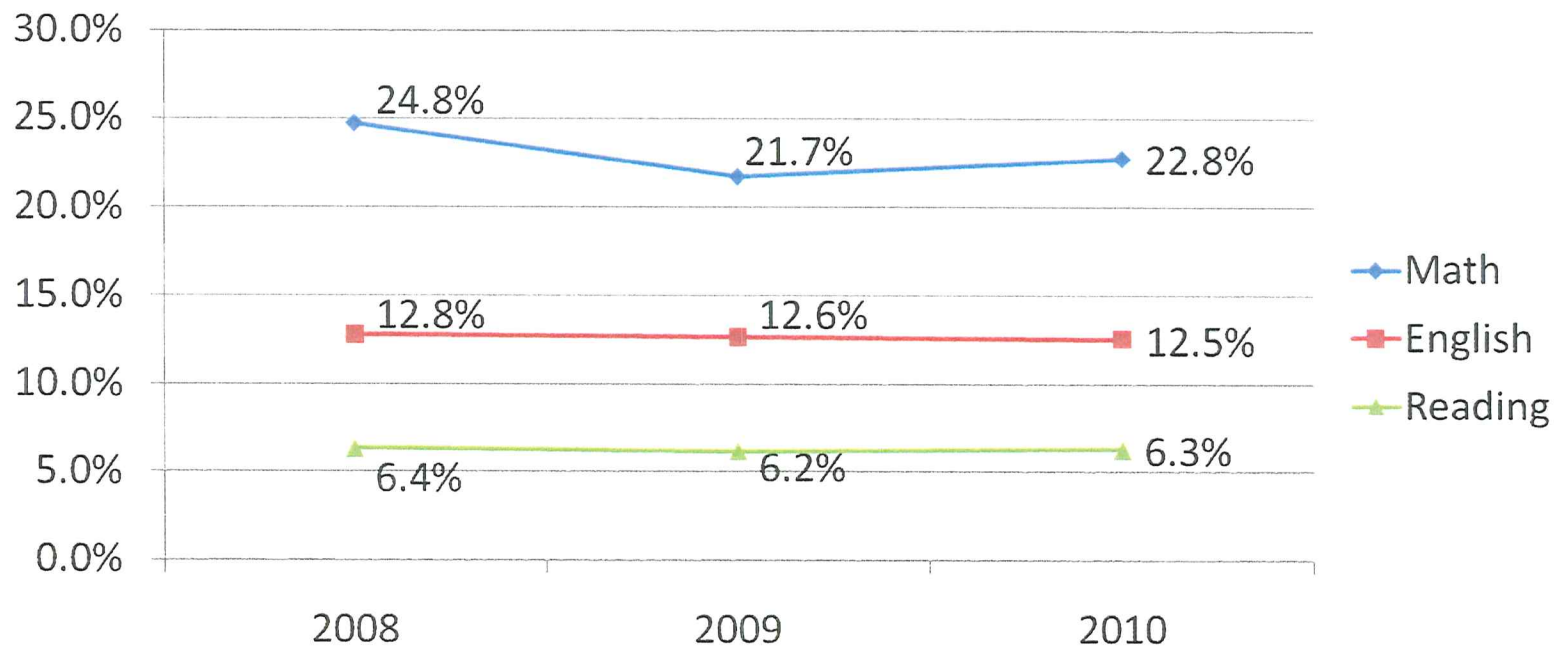
- ★ English – 74% (KS), 66% (US)
- ★ Math – 51% (KS), 43% (US)
- ★ Reading – 60% (KS), 52% (US)
- ★ Science – 34% (KS), 29% (US)
- ★ All Categories – 28% (KS), 24% (US)

★ LEADING HIGHER EDUCATION ★

FORESIGHT 2020

A 10-Year Strategic Agenda for the State's Public Higher Education System

Recent HS Grads Taking Developmental Coursework



Source: KSPSD Academic Year Collection

Excludes Technical Colleges; No English or Reading Remedial Coursework from Ft Hays, KU, and Pittsburg State.



LEADING HIGHER EDUCATION

4



FORESIGHT 2020

A 10-Year Strategic Agenda for the State's Public Higher Education System

What are the first to second year college retention rates?
(Fall 2009 to Fall 2010)

	<u>Institutional</u>	<u>System</u>
• State Universities	76.9%	87.6%
• Washburn University	62.5%	75.5%
• Community Colleges	53.0%	61.9%
• Technical Colleges	40.0%	45.1%

★ LEADING HIGHER EDUCATION ★

FORESIGHT 2020

A 10-Year Strategic Agenda for the State's Public Higher Education System

What are the graduation rates?

	<u>Institutional</u>	<u>System</u>
★ State Universities	24.08% (4 year) 53.44% (6 year)	24.79% (4 year) 56.09% (6 year)
★ Washburn University	15% (4 year) 38.5% (4 year)	24.79% (4 year) 41.7% (6 year)
★ Community Colleges	14.96% (2 year) 21.9% (3 year) 24.34% (4 year)	15.38% (2 year) 23.01% (3 year) 25.99% (4 year)
★ Technical Colleges		
Certificate	44.6% (1 year)	43.91% (1 year)
Degree	11.5% (2 year) 13.99% (3 year) 14.82% (4 year)	12.19% (2 year) 15.1% (3 year) 16.48% (4 year)

★ LEADING HIGHER EDUCATION ★

FORESIGHT 2020

A 10-Year Strategic Agenda for the State's Public Higher Education System

What are current Kansas college admissions requirements?

- ★ Technical Colleges – Open Admission
- ★ Community Colleges – Open Admission
- ★ Washburn University – Qualified as set by the Washburn Board of Regents
- ★ Regents Universities – 21 ACT or 2.0 on Regents Curriculum or Top One-Third of Graduating Class

★ LEADING HIGHER EDUCATION ★

FORESIGHT 2020

A 10-Year Strategic Agenda for the State's Public Higher Education System

What new Kansas college admissions requirements will go into effect in 2015?

- ★ Technical Colleges – Open Admission
- ★ Community Colleges – Open Admission
- ★ Washburn University – Based on Decision of Washburn Board
- ★ Regents Universities – 21 ACT or Top Third of Graduating Class and 2.0 on Regents Curriculum to Include a Fourth Unit of Math if College Readiness Benchmark is not Achieved

★ LEADING HIGHER EDUCATION ★

FORESIGHT 2020

A 10-Year Strategic Agenda for the State's Public Higher Education System

What other initiatives are we taking to improve college readiness?

- ★ Requiring colleges and universities to visit with high school partners to help clarify expectations
- ★ Improving quality and expanding access to concurrent enrollment
- ★ Eventually using performance on state assessment of common core standards to ensure admission to credit bearing courses
- ★ Providing feedback to high schools on performance of graduates in college

★ LEADING HIGHER EDUCATION ★