

Kansas State Department of Education **A+** Report Card 2010-2011



- [Home](#)
- [State](#)
- [School/District](#)

State Information

- ✓ [Demographics](#)
- ✓ [Definitions](#)
- ✓ [Summary:](#)
 - [2003-2004](#)
 - [2004-2005](#)
 - [2005-2006](#)
 - [2006-2007](#)
 - [2007-2008](#)
 - [2008-2009](#)
 - [2009-2010](#)
 - [2010-2011](#)

- ✓ [Comparative Perf. & Fiscal System](#)

Performance Indicators

Reading

- ✓ [All Students](#)
- ✓ [Race/Ethnicity](#)
- ✓ [Economically Disadvantaged](#)
- ✓ [Students with Disabilities](#)
- ✓ [English Language Learners](#)
- ✓ [Migrant Students](#)
- ✓ [Gender](#)

Math

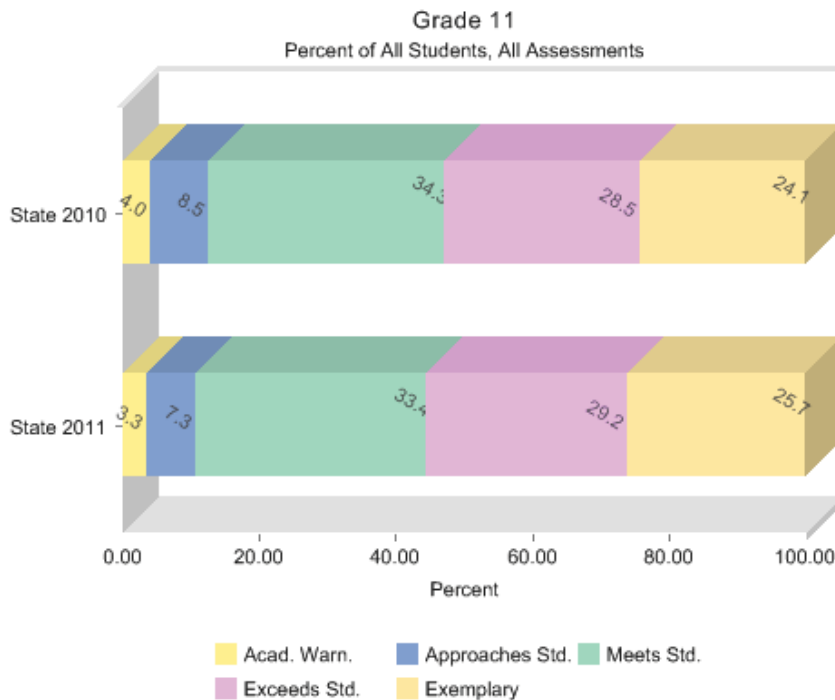
- ✓ [All Students](#)
- ✓ [Race/Ethnicity](#)
- ✓ [Economically Disadvantaged](#)
- ✓ [Students with Disabilities](#)
- ✓ [English Language Learners](#)
- ✓ [Migrant Students](#)
- ✓ [Gender](#)

Science

- ✓ [All Students](#)

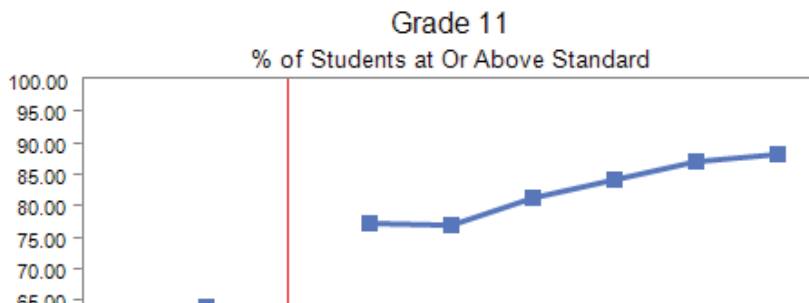
State Reading Assessment Results

- [Grade 03](#)
- [Grade 04](#)
- [Grade 05](#)
- [Grade 06](#)
- [Grade 07](#)
- [Grade 08](#)



[Text Version](#)

Plaintiffs' Ex. 418



- ✓ [Race/Ethnicity](#)
- ✓ [Economically Disadvantaged](#)
- ✓ [Students with Disabilities](#)
- ✓ [English Language Learners](#)
- ✓ [Migrant Students](#)
- ✓ [Gender](#)

History - Govt.

- ✓ [All Students](#)
- ✓ [Race/Ethnicity](#)
- ✓ [Economically Disadvantaged](#)
- ✓ [Students with Disabilities](#)
- ✓ [English Language Learners](#)
- ✓ [Migrant Students](#)
- ✓ [Gender](#)

Writing

- ✓ [All Students](#)
- ✓ [Race/Ethnicity](#)
- ✓ [Economically Disadvantaged](#)
- ✓ [Students with Disabilities](#)
- ✓ [English Language Learners](#)
- ✓ [Migrant Students](#)
- ✓ [Gender](#)

Student Participation

- ✓ [Attendance Rate](#)
- ✓ [Graduation Rate](#)

NCLB

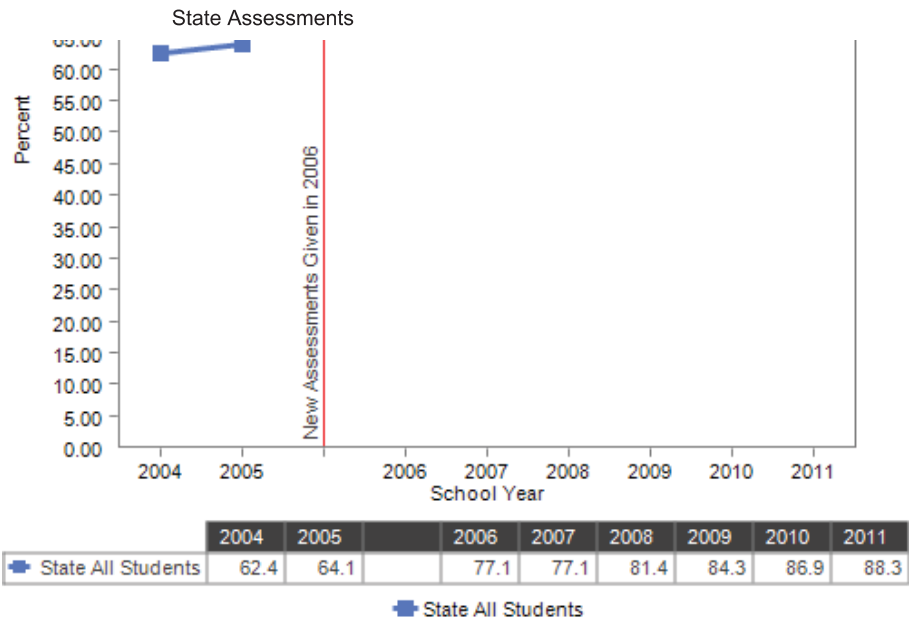
- ✓ [Accountability](#)
- ✓ [Title I Schools on Improvement](#)
- ✓ [Requirements of AYP](#)
- ✓ [Teacher Quality](#)
- ✓ [NAEP State Results](#)

QPA

- ✓ [School Accred. Status](#)

Student Demographics

- ✓ [Enrollment](#)

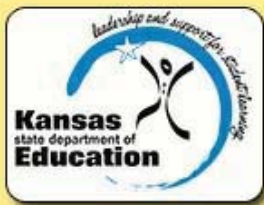


[Text Version](#)

**Percent Not Tested in 2011:
State 1.1%**

PLEASE NOTE: There may be slight differences between percentages displayed on the Assessment Results pages and those displayed on the Requirements of AYP pages.

The assessment results presented on this page include *all* students in the grades tested up to and during the testing window...not just those students enrolled on or before September 20. Slight differences between percentages reported for the assessment results and those reported for Adequate Yearly Progress (AYP) are to be expected. The AYP calculation, as well as the Standard of Excellence calculation, is based upon the results of those students who were enrolled by September 20.



Kansas State Department of Education **A+**
Report Card 2010-2011



- Home
- | State
- | School/District

State Information

- ✓ [Demographics](#)
- ✓ [Definitions](#)
- ✓ Summary:
 - [2003-2004](#)
 - [2004-2005](#)
 - [2005-2006](#)
 - [2006-2007](#)
 - [2007-2008](#)
 - [2008-2009](#)
 - [2009-2010](#)
 - [2010-2011](#)

- ✓ [Comparative Perf. & Fiscal System](#)

Performance Indicators

Reading

- ✓ [All Students](#)
- ✓ [Race/Ethnicity](#)
- ✓ [Economically Disadvantaged](#)
- ✓ [Students with Disabilities](#)
- ✓ [English Language Learners](#)
- ✓ [Migrant Students](#)
- ✓ [Gender](#)

Math

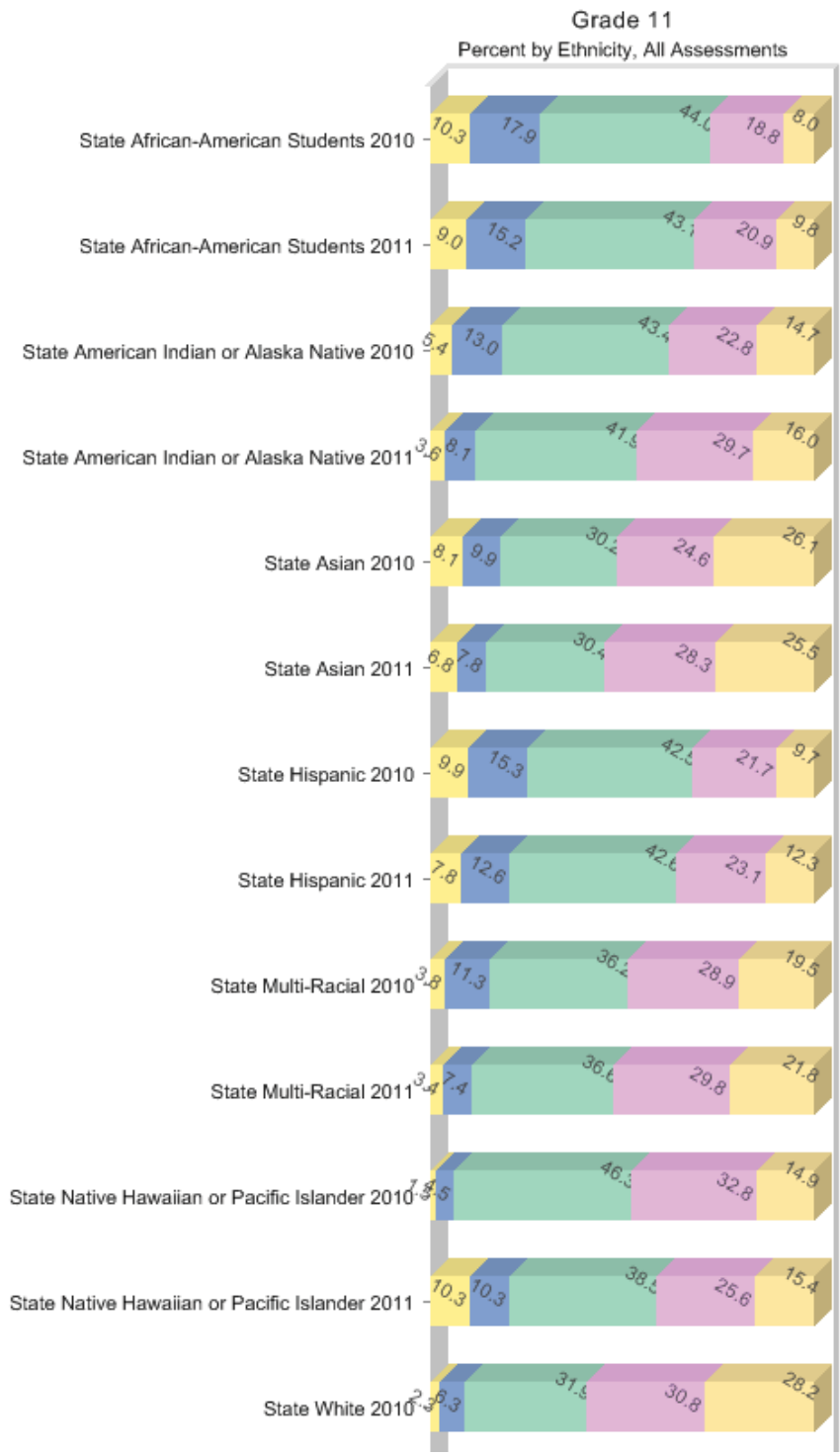
- ✓ [All Students](#)
- ✓ [Race/Ethnicity](#)
- ✓ [Economically Disadvantaged](#)
- ✓ [Students with Disabilities](#)
- ✓ [English Language Learners](#)
- ✓ [Migrant Students](#)
- ✓ [Gender](#)

Science

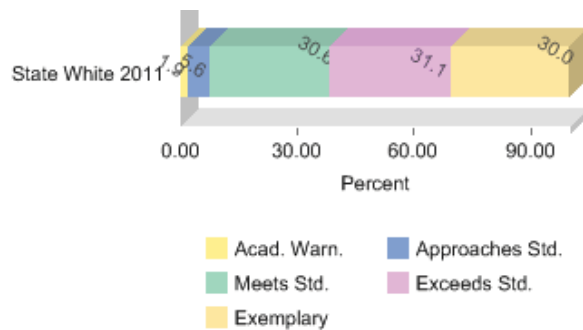
- ✓ [All Students](#)

State Reading Assessment Results

- [Grade 03](#)
- [Grade 04](#)
- [Grade 05](#)
- [Grade 06](#)
- [Grade 07](#)
- [Grade 08](#)



- ✓ [Race/Ethnicity](#)
- ✓ [Economically Disadvantaged](#)
- ✓ [Students with Disabilities](#)
- ✓ [English Language Learners](#)
- ✓ [Migrant Students](#)
- ✓ [Gender](#)



History - Govt.

- ✓ [All Students](#)
- ✓ [Race/Ethnicity](#)
- ✓ [Economically Disadvantaged](#)
- ✓ [Students with Disabilities](#)
- ✓ [English Language Learners](#)
- ✓ [Migrant Students](#)
- ✓ [Gender](#)

Text Version

Percent Not Tested in 2011:

State

African-American Students:	2.0%
Hispanic:	1.6%
White:	0.9%
Asian :	1.4%
American Indian or Alaska Native:	0.7%
Multi-Racial:	1.0%
Native Hawaiian or Pacific Islander:	0.0%

PLEASE NOTE: There may be slight differences between percentages displayed on the Assessment Results pages and those displayed on the Requirements of AYP pages.

Writing

- ✓ [All Students](#)
- ✓ [Race/Ethnicity](#)
- ✓ [Economically Disadvantaged](#)
- ✓ [Students with Disabilities](#)
- ✓ [English Language Learners](#)
- ✓ [Migrant Students](#)
- ✓ [Gender](#)

The assessment results presented on this page include *all* students in the grades tested up to and during the testing window...not just those students enrolled on or before September 20. Slight differences between percentages reported for the assessment results and those reported for Adequate Yearly Progress (AYP) are to be expected. The AYP calculation, as well as the Standard of Excellence calculation, is based upon the results of those students who were enrolled by September 20.

Student

Participation

- ✓ [Attendance Rate](#)
- ✓ [Graduation Rate](#)

NCLB

Accountability

- ✓ [Title I Schools on Improvement](#)
- ✓ [Requirements of AYP](#)
- ✓ [Teacher Quality](#)
- ✓ [NAEP State Results](#)

QPA

- ✓ [School Accred. Status](#)

Student

Demographics

- ✓ [Enrollment](#)



State Information

- ✓ [Demographics](#)
- ✓ [Definitions](#)
- ✓ [Summary:](#)
 - [2003-2004](#)
 - [2004-2005](#)
 - [2005-2006](#)
 - [2006-2007](#)
 - [2007-2008](#)
 - [2008-2009](#)
 - [2009-2010](#)
 - [2010-2011](#)

- ✓ [Comparative Perf. & Fiscal System](#)

Performance Indicators

Reading

- ✓ [All Students](#)
- ✓ [Race/Ethnicity](#)
- ✓ [Economically Disadvantaged](#)
- ✓ [Students with Disabilities](#)
- ✓ [English Language Learners](#)
- ✓ [Migrant Students](#)
- ✓ [Gender](#)

Math

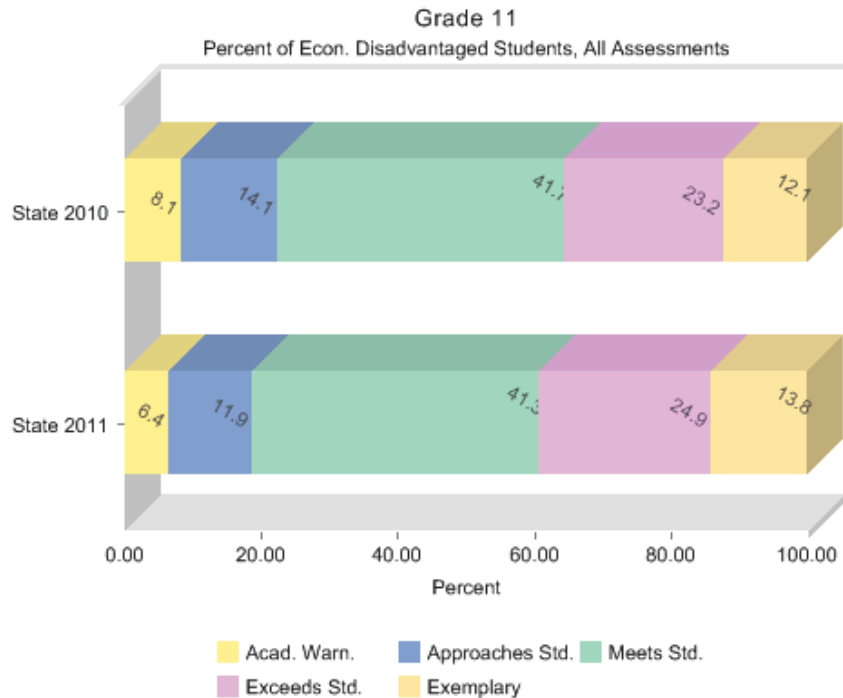
- ✓ [All Students](#)
- ✓ [Race/Ethnicity](#)
- ✓ [Economically Disadvantaged](#)
- ✓ [Students with Disabilities](#)
- ✓ [English Language Learners](#)
- ✓ [Migrant Students](#)
- ✓ [Gender](#)

Science

- ✓ [All Students](#)

State Reading Assessment Results

[Grade 03](#) [Grade 04](#) [Grade 05](#) [Grade 06](#) [Grade 07](#) [Grade 08](#)



[Text Version](#)

Percent Not Tested in 2011:
State 1.6%

PLEASE NOTE: There may be slight differences between percentages displayed on the Assessment Results pages and those displayed on the Requirements of AYP pages.

The assessment results presented on this page include *all* students in the grades tested up to and during the testing window...not just those students enrolled on or before September 20. Slight differences between percentages reported for the assessment results and those reported for Adequate Yearly Progress (AYP) are to be expected. The AYP calculation, as well as the Standard of Excellence calculation, is based upon the results of those students who were enrolled by September 20.



State Information

- ✓ [Demographics](#)
- ✓ [Definitions](#)
- ✓ [Summary:](#)
 - [2003-2004](#)
 - [2004-2005](#)
 - [2005-2006](#)
 - [2006-2007](#)
 - [2007-2008](#)
 - [2008-2009](#)
 - [2009-2010](#)
 - [2010-2011](#)

- ✓ [Comparative Perf. & Fiscal System](#)

Performance Indicators

Reading

- ✓ [All Students](#)
- ✓ [Race/Ethnicity](#)
- ✓ [Economically Disadvantaged](#)
- ✓ [Students with Disabilities](#)
- ✓ [English Language Learners](#)
- ✓ [Migrant Students](#)
- ✓ [Gender](#)

Math

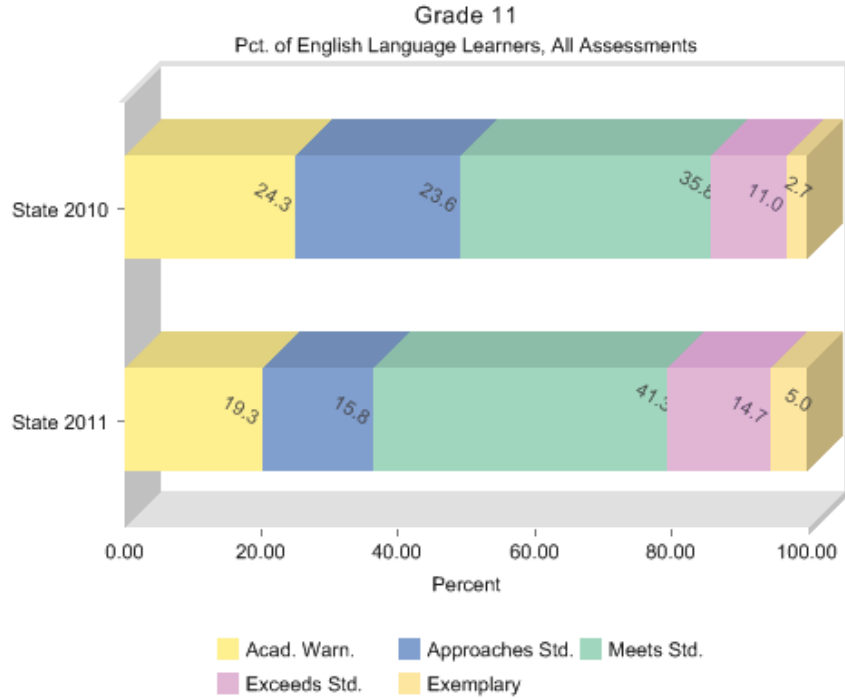
- ✓ [All Students](#)
- ✓ [Race/Ethnicity](#)
- ✓ [Economically Disadvantaged](#)
- ✓ [Students with Disabilities](#)
- ✓ [English Language Learners](#)
- ✓ [Migrant Students](#)
- ✓ [Gender](#)

Science

- ✓ [All Students](#)

State Reading Assessment Results

[Grade 03](#) [Grade 04](#) [Grade 05](#) [Grade 06](#) [Grade 07](#) [Grade 08](#)



[Text Version](#)

Percent Not Tested in 2011:
State 3.9%

PLEASE NOTE: There may be slight differences between percentages displayed on the Assessment Results pages and those displayed on the Requirements of AYP pages.

The assessment results presented on this page include *all* students in the grades tested up to and during the testing window...not just those students enrolled on or before September 20. Slight differences between percentages reported for the assessment results and those reported for Adequate Yearly Progress (AYP) are to be expected. The AYP calculation, as well as the Standard of Excellence calculation, is based upon the results of those students who were enrolled by September 20.



Kansas State Department of Education **A+** Report Card 2010-2011



[Home](#) | [State](#) | [School/District](#)

State Information

- ✓ [Demographics](#)
- ✓ [Definitions](#)
- ✓ [Summary:](#)
 - [2003-2004](#)
 - [2004-2005](#)
 - [2005-2006](#)
 - [2006-2007](#)
 - [2007-2008](#)
 - [2008-2009](#)
 - [2009-2010](#)
 - [2010-2011](#)

- ✓ [Comparative Perf. & Fiscal System](#)

Performance Indicators

Reading

- ✓ [All Students](#)
- ✓ [Race/Ethnicity](#)
- ✓ [Economically Disadvantaged](#)
- ✓ [Students with Disabilities](#)
- ✓ [English Language Learners](#)
- ✓ [Migrant Students](#)
- ✓ [Gender](#)

Math

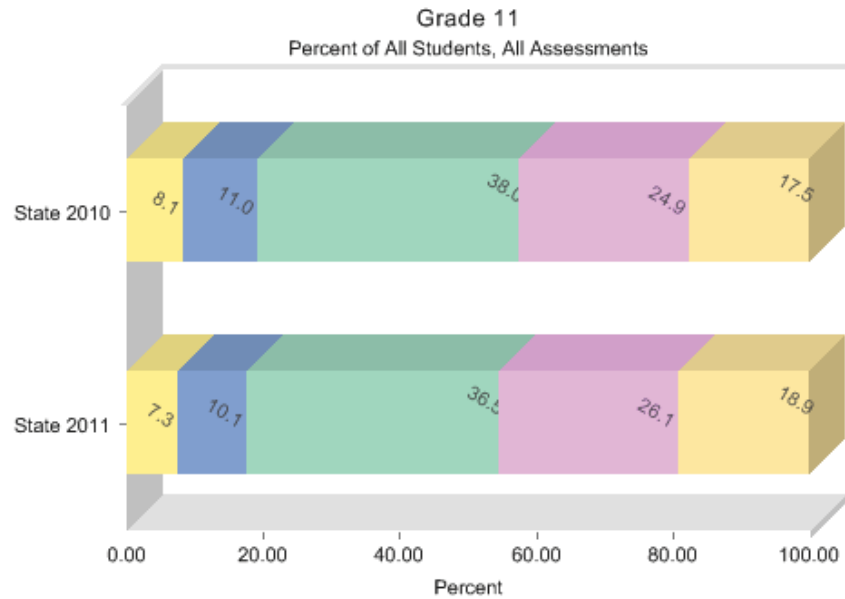
- ✓ [All Students](#)
- ✓ [Race/Ethnicity](#)
- ✓ [Economically Disadvantaged](#)
- ✓ [Students with Disabilities](#)
- ✓ [English Language Learners](#)
- ✓ [Migrant Students](#)
- ✓ [Gender](#)

Science

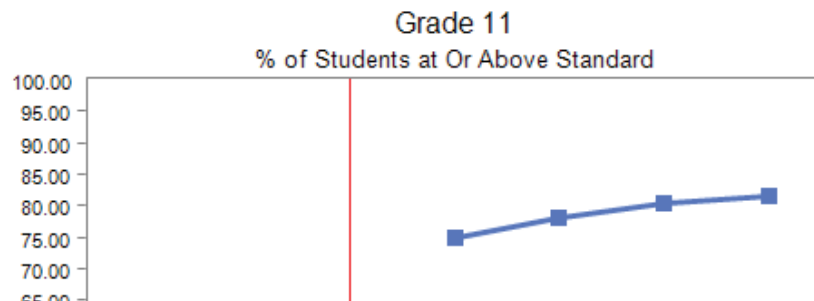
- ✓ [All Students](#)

State Math Assessment Results

[Grade 03](#) [Grade 04](#) [Grade 05](#) [Grade 06](#) [Grade 07](#) [Grade 08](#)



[Text Version](#)



- ✓ [Race/Ethnicity](#)
- ✓ [Economically Disadvantaged](#)
- ✓ [Students with Disabilities](#)
- ✓ [English Language Learners](#)
- ✓ [Migrant Students](#)
- ✓ [Gender](#)

History - Govt.

- ✓ [All Students](#)
- ✓ [Race/Ethnicity](#)
- ✓ [Economically Disadvantaged](#)
- ✓ [Students with Disabilities](#)
- ✓ [English Language Learners](#)
- ✓ [Migrant Students](#)
- ✓ [Gender](#)

Writing

- ✓ [All Students](#)
- ✓ [Race/Ethnicity](#)
- ✓ [Economically Disadvantaged](#)
- ✓ [Students with Disabilities](#)
- ✓ [English Language Learners](#)
- ✓ [Migrant Students](#)
- ✓ [Gender](#)

Student

Participation

- ✓ [Attendance Rate](#)
- ✓ [Graduation Rate](#)

NCLB

Accountability

- ✓ [Title I Schools on Improvement](#)
- ✓ [Requirements of AYP](#)
- ✓ [Teacher Quality](#)
- ✓ [NAEP State Results](#)

QPA

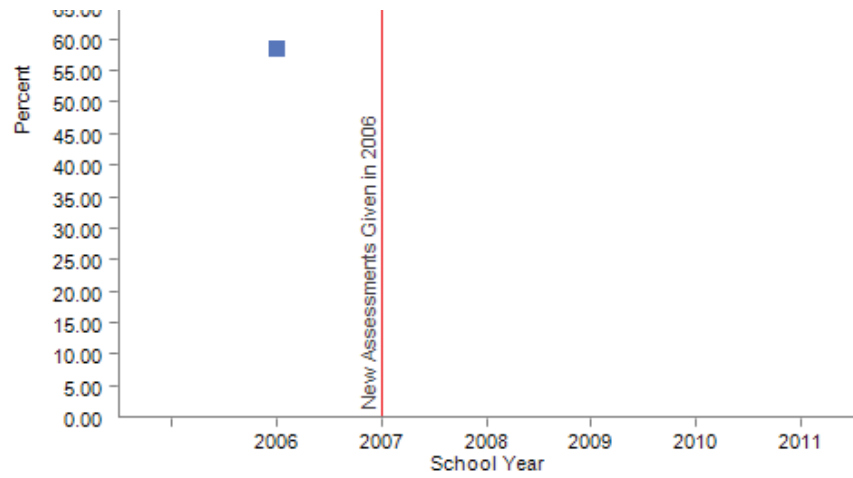
- ✓ [School Accred. Status](#)

Student

Demographics

- ✓ [Enrollment](#)

State Assessments



	2006	2007	2008	2009	2010	2011
State All Students	58.4		75.0	78.2	80.4	81.5

[Text Version](#)

Percent Not Tested in 2011:
State 1.0%

PLEASE NOTE: There may be slight differences between percentages displayed on the Assessment Results pages and those displayed on the Requirements of AYP pages.

The assessment results presented on this page include *all* students in the grades tested up to and during the testing window...not just those students enrolled on or before September 20. Slight differences between percentages reported for the assessment results and those reported for Adequate Yearly Progress (AYP) are to be expected. The AYP calculation, as well as the Standard of Excellence calculation, is based upon the results of those students who were enrolled by September 20.



Kansas State Department of Education **A+**
Report Card 2010-2011



Home | State | School/District

State Information

✓ [Demographics](#)

✓ [Definitions](#)

✓ Summary:

[2003-2004](#)

[2004-2005](#)

[2005-2006](#)

[2006-2007](#)

[2007-2008](#)

[2008-2009](#)

[2009-2010](#)

[2010-2011](#)

✓ [Comparative Perf. & Fiscal System](#)

Performance Indicators

Reading

✓ [All Students](#)

✓ [Race/Ethnicity](#)

✓ [Economically Disadvantaged](#)

✓ [Students with Disabilities](#)

✓ [English Language Learners](#)

✓ [Migrant Students](#)

✓ [Gender](#)

Math

✓ [All Students](#)

✓ [Race/Ethnicity](#)

✓ [Economically Disadvantaged](#)

✓ [Students with Disabilities](#)

✓ [English Language Learners](#)

✓ [Migrant Students](#)

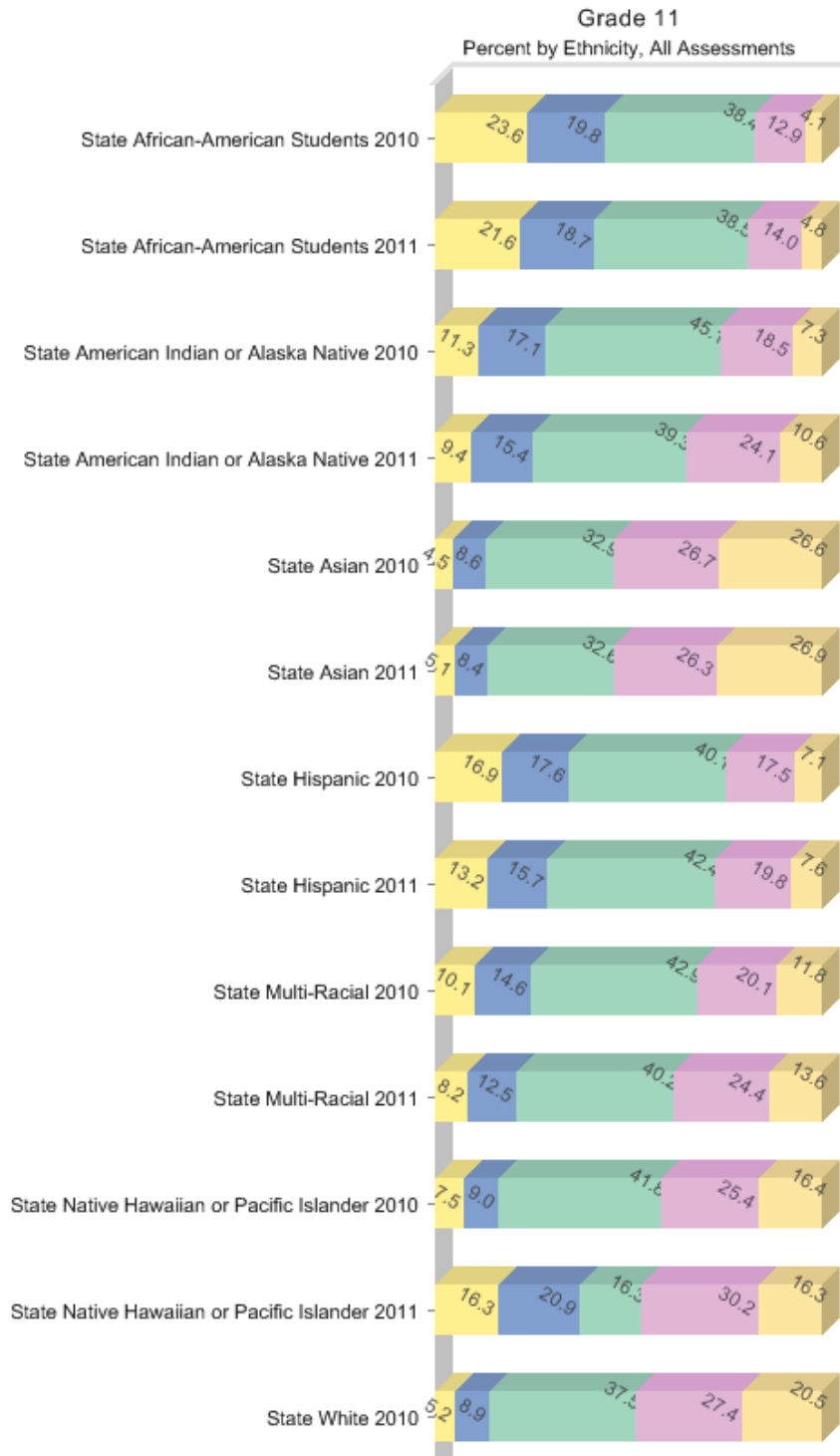
✓ [Gender](#)

Science

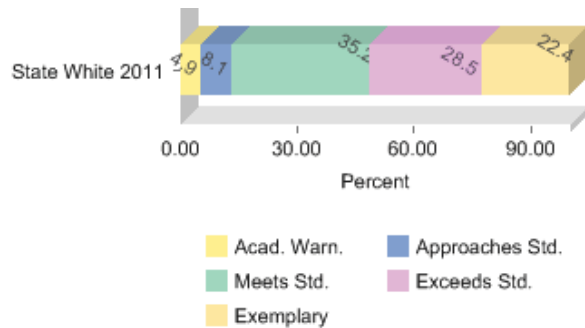
✓ [All Students](#)

State Math Assessment Results

[Grade 03](#) [Grade 04](#) [Grade 05](#) [Grade 06](#) [Grade 07](#) [Grade 08](#)



- ✓ [Race/Ethnicity](#)
- ✓ [Economically Disadvantaged](#)
- ✓ [Students with Disabilities](#)
- ✓ [English Language Learners](#)
- ✓ [Migrant Students](#)
- ✓ [Gender](#)



History - Govt.

- ✓ [All Students](#)
- ✓ [Race/Ethnicity](#)
- ✓ [Economically Disadvantaged](#)
- ✓ [Students with Disabilities](#)
- ✓ [English Language Learners](#)
- ✓ [Migrant Students](#)
- ✓ [Gender](#)

Text Version

Percent Not Tested in 2011:

State

African-American Students:	2.3%
Hispanic:	1.3%
White:	0.9%
Asian :	0.7%
American Indian or Alaska Native:	1.1%
Multi-Racial:	1.0%
Native Hawaiian or Pacific Islander:	0.0%

PLEASE NOTE: There may be slight differences between percentages displayed on the Assessment Results pages and those displayed on the Requirements of AYP pages.

Writing

- ✓ [All Students](#)
- ✓ [Race/Ethnicity](#)
- ✓ [Economically Disadvantaged](#)
- ✓ [Students with Disabilities](#)
- ✓ [English Language Learners](#)
- ✓ [Migrant Students](#)
- ✓ [Gender](#)

The assessment results presented on this page include *all* students in the grades tested up to and during the testing window...not just those students enrolled on or before September 20. Slight differences between percentages reported for the assessment results and those reported for Adequate Yearly Progress (AYP) are to be expected. The AYP calculation, as well as the Standard of Excellence calculation, is based upon the results of those students who were enrolled by September 20.

Student

Participation

- ✓ [Attendance Rate](#)
- ✓ [Graduation Rate](#)

NCLB

Accountability

- ✓ [Title I Schools on Improvement](#)
- ✓ [Requirements of AYP](#)
- ✓ [Teacher Quality](#)
- ✓ [NAEP State Results](#)

QPA

- ✓ [School Accred. Status](#)

Student

Demographics

- ✓ [Enrollment](#)



State Information

- ✓ [Demographics](#)
- ✓ [Definitions](#)
- ✓ [Summary:](#)
 - [2003-2004](#)
 - [2004-2005](#)
 - [2005-2006](#)
 - [2006-2007](#)
 - [2007-2008](#)
 - [2008-2009](#)
 - [2009-2010](#)
 - [2010-2011](#)

- ✓ [Comparative Perf. & Fiscal System](#)

Performance Indicators

Reading

- ✓ [All Students](#)
- ✓ [Race/Ethnicity](#)
- ✓ [Economically Disadvantaged](#)
- ✓ [Students with Disabilities](#)
- ✓ [English Language Learners](#)
- ✓ [Migrant Students](#)
- ✓ [Gender](#)

Math

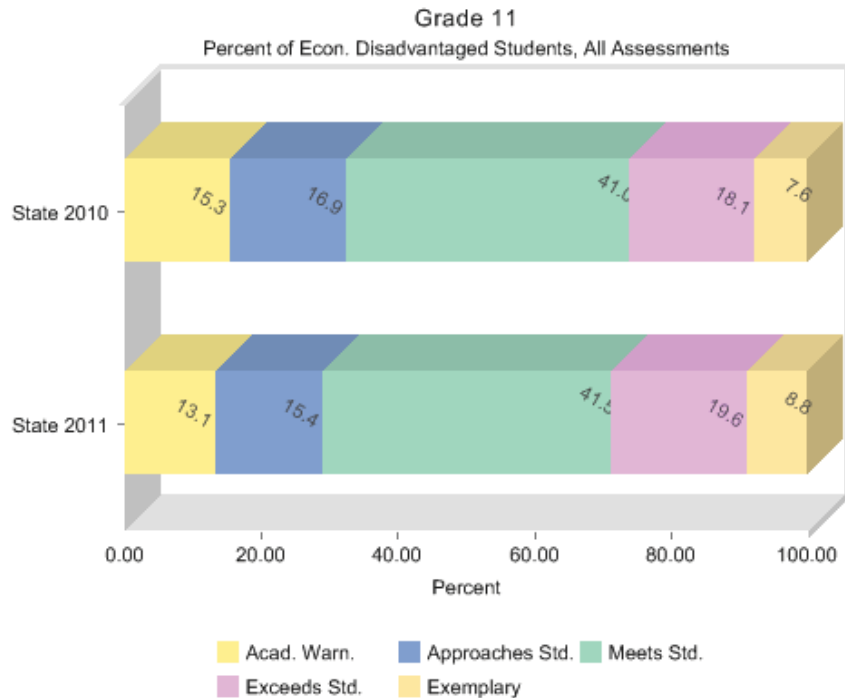
- ✓ [All Students](#)
- ✓ [Race/Ethnicity](#)
- ✓ [Economically Disadvantaged](#)
- ✓ [Students with Disabilities](#)
- ✓ [English Language Learners](#)
- ✓ [Migrant Students](#)
- ✓ [Gender](#)

Science

- ✓ [All Students](#)

State Math Assessment Results

[Grade 03](#) [Grade 04](#) [Grade 05](#) [Grade 06](#) [Grade 07](#) [Grade 08](#)



[Text Version](#)

Percent Not Tested in 2011:
State 1.7%

PLEASE NOTE: There may be slight differences between percentages displayed on the Assessment Results pages and those displayed on the Requirements of AYP pages.

The assessment results presented on this page include *all* students in the grades tested up to and during the testing window...not just those students enrolled on or before September 20. Slight differences between percentages reported for the assessment results and those reported for Adequate Yearly Progress (AYP) are to be expected. The AYP calculation, as well as the Standard of Excellence calculation, is based upon the results of those students who were enrolled by September 20.



State Information

- ✓ [Demographics](#)
- ✓ [Definitions](#)
- ✓ [Summary:](#)
 - [2003-2004](#)
 - [2004-2005](#)
 - [2005-2006](#)
 - [2006-2007](#)
 - [2007-2008](#)
 - [2008-2009](#)
 - [2009-2010](#)
 - [2010-2011](#)

- ✓ [Comparative Perf. & Fiscal System](#)

Performance Indicators

Reading

- ✓ [All Students](#)
- ✓ [Race/Ethnicity](#)
- ✓ [Economically Disadvantaged](#)
- ✓ [Students with Disabilities](#)
- ✓ [English Language Learners](#)
- ✓ [Migrant Students](#)
- ✓ [Gender](#)

Math

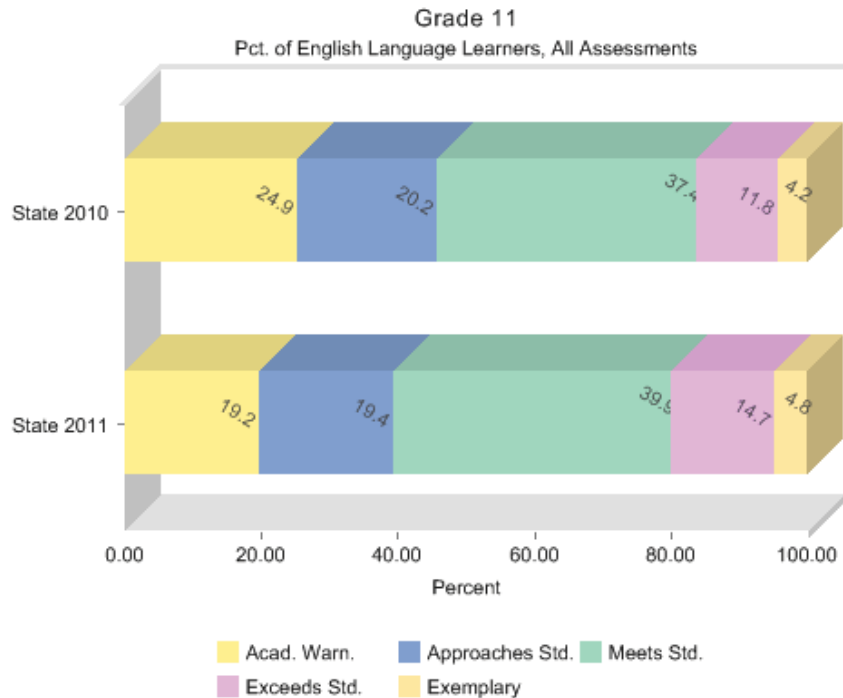
- ✓ [All Students](#)
- ✓ [Race/Ethnicity](#)
- ✓ [Economically Disadvantaged](#)
- ✓ [Students with Disabilities](#)
- ✓ [English Language Learners](#)
- ✓ [Migrant Students](#)
- ✓ [Gender](#)

Science

- ✓ [All Students](#)

State Math Assessment Results

[Grade 03](#) [Grade 04](#) [Grade 05](#) [Grade 06](#) [Grade 07](#) [Grade 08](#)



[Text Version](#)

Percent Not Tested in 2011:
State 2.0%

PLEASE NOTE: There may be slight differences between percentages displayed on the Assessment Results pages and those displayed on the Requirements of AYP pages.

The assessment results presented on this page include *all* students in the grades tested up to and during the testing window...not just those students enrolled on or before September 20. Slight differences between percentages reported for the assessment results and those reported for Adequate Yearly Progress (AYP) are to be expected. The AYP calculation, as well as the Standard of Excellence calculation, is based upon the results of those students who were enrolled by September 20.



Kansas State Department of Education **A+**
Report Card 2010-2011



[Home](#) | [State](#) | [School/District](#)

District Information

- ✓ [Demographics](#)
- ✓ [Definitions](#)
- ✓ Summary:
 - [2003-2004](#)
 - [2004-2005](#)
 - [2005-2006](#)
 - [2006-2007](#)
 - [2007-2008](#)
 - [2008-2009](#)
 - [2009-2010](#)
 - [2010-2011](#)

USD 259
Wichita
 201 N Water
 Wichita, KS 67202-1292
 (316) 973-4000 (316) 973-4595
Title 1 District on Corrective Action.

[Show Buildings](#)

- ✓ [Comparative Perf. & Fiscal System](#)

Performance Indicators

Reading

- ✓ [All Students](#)
- ✓ [Race/Ethnicity](#)
- ✓ [Economically Disadvantaged](#)
- ✓ [Students with Disabilities](#)
- ✓ [English Language Learners](#)
- ✓ [Migrant Students](#)
- ✓ [Gender](#)

Math

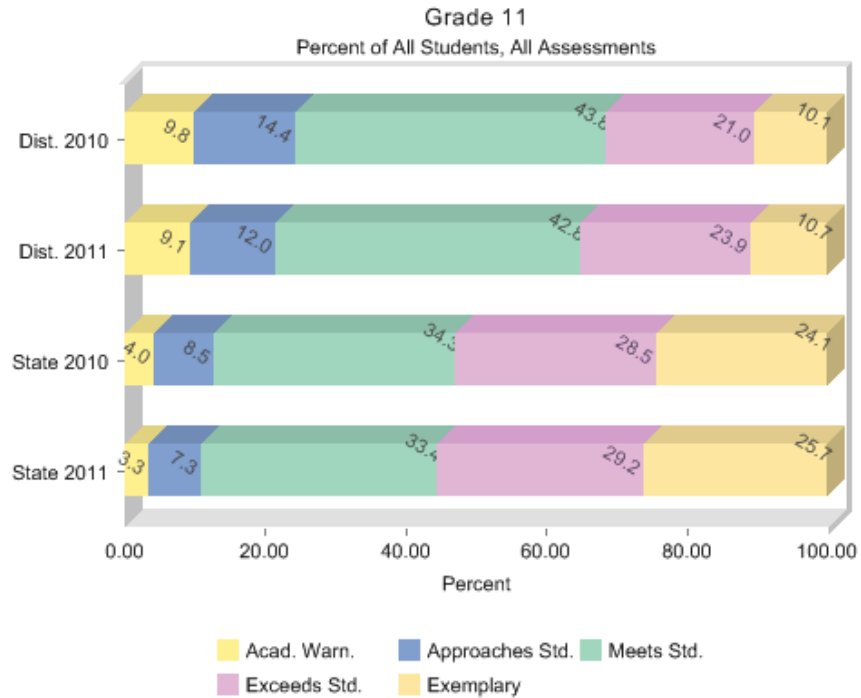
- ✓ [All Students](#)
- ✓ [Race/Ethnicity](#)
- ✓ [Economically Disadvantaged](#)
- ✓ [Students with Disabilities](#)
- ✓ [English Language Learners](#)
- ✓ [Migrant Students](#)
- ✓ [Gender](#)

Science

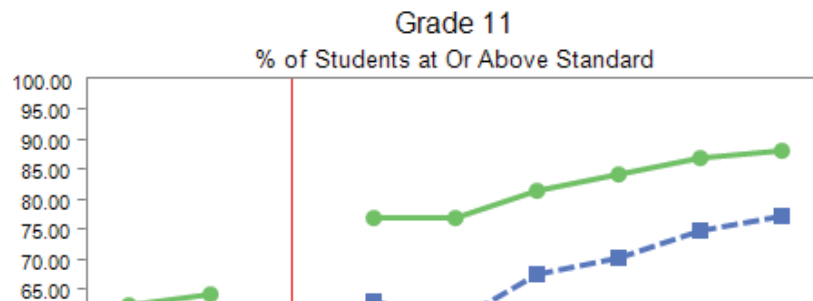
- ✓ [All Students](#)

Reading Assessment Results

[Grade 03](#) [Grade 04](#) [Grade 05](#) [Grade 06](#) [Grade 07](#) [Grade 08](#)



[Text Version](#)



- ✓ [Race/Ethnicity](#)
- ✓ [Economically Disadvantaged](#)
- ✓ [Students with Disabilities](#)
- ✓ [English Language Learners](#)
- ✓ [Migrant Students](#)
- ✓ [Gender](#)

History - Govt.

- ✓ [All Students](#)
- ✓ [Race/Ethnicity](#)
- ✓ [Economically Disadvantaged](#)
- ✓ [Students with Disabilities](#)
- ✓ [English Language Learners](#)
- ✓ [Migrant Students](#)
- ✓ [Gender](#)

Writing

- ✓ [All Students](#)
- ✓ [Race/Ethnicity](#)
- ✓ [Economically Disadvantaged](#)
- ✓ [Students with Disabilities](#)
- ✓ [English Language Learners](#)
- ✓ [Migrant Students](#)
- ✓ [Gender](#)

Student

Participation

- ✓ [Attendance Rate](#)
- ✓ [Graduation Rate](#)

NCLB

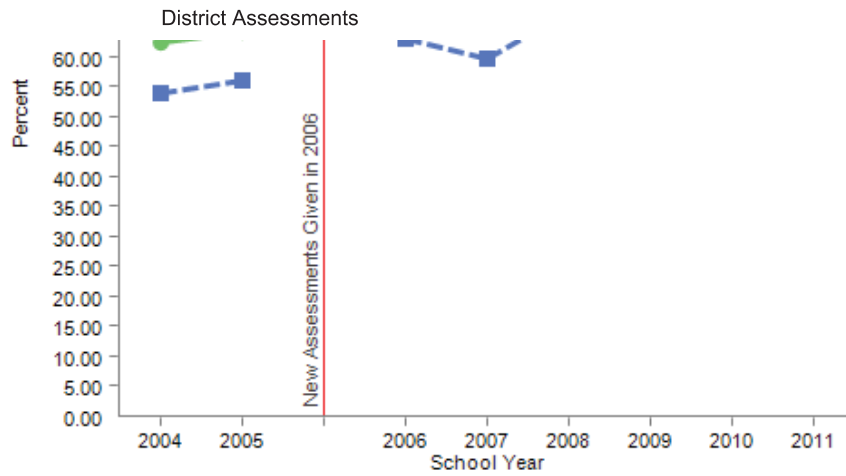
Accountability

- ✓ [Title I Schools on Improvement](#)
- ✓ [Requirements of AYP](#)
- ✓ [Teacher Quality](#)
- ✓ [NAEP State Results](#)
- ✓ [2009-10 District IDEA State Perf. Plan](#)

Student

Demographics

- ✓ [Enrollment](#)
- ✓ [Race/Ethnicity](#)



	2004	2005	2006	2007	2008	2009	2010	2011
Dist. All Students	53.9	56.1	63.1	59.8	67.6	70.3	74.9	77.4
State All Students	62.4	64.1	77.1	77.1	81.4	84.3	86.9	88.3

■ Dist. All Students ● State All Students

[Text Version](#)

Percent Not Tested in 2011:

District 1.5%

State 1.1%

PLEASE NOTE: There may be slight differences between percentages displayed on the Assessment Results pages and those displayed on the Requirements of AYP pages.

The assessment results presented on this page include *all* students in the grades tested up to and during the testing window...not just those students enrolled on or before September 20. Slight differences between percentages reported for the assessment results and those reported for Adequate Yearly Progress (AYP) are to be expected. The AYP calculation, as well as the Standard of Excellence calculation, is based upon the results of those students who were enrolled by September 20.



District Information

- ✓ [Demographics](#)
- ✓ [Definitions](#)
- ✓ Summary:
 - [2003-2004](#)
 - [2004-2005](#)
 - [2005-2006](#)
 - [2006-2007](#)
 - [2007-2008](#)
 - [2008-2009](#)
 - [2009-2010](#)
 - [2010-2011](#)

- ✓ [Comparative Perf. & Fiscal System](#)

Performance Indicators

Reading

- ✓ [All Students](#)
- ✓ [Race/Ethnicity](#)
- ✓ [Economically Disadvantaged](#)
- ✓ [Students with Disabilities](#)
- ✓ [English Language Learners](#)
- ✓ [Migrant Students](#)
- ✓ [Gender](#)

Math

- ✓ [All Students](#)
- ✓ [Race/Ethnicity](#)
- ✓ [Economically Disadvantaged](#)
- ✓ [Students with Disabilities](#)
- ✓ [English Language Learners](#)
- ✓ [Migrant Students](#)
- ✓ [Gender](#)

Science

- ✓ [All Students](#)

USD 259

Wichita

201 N Water

Wichita, KS 67202-1292

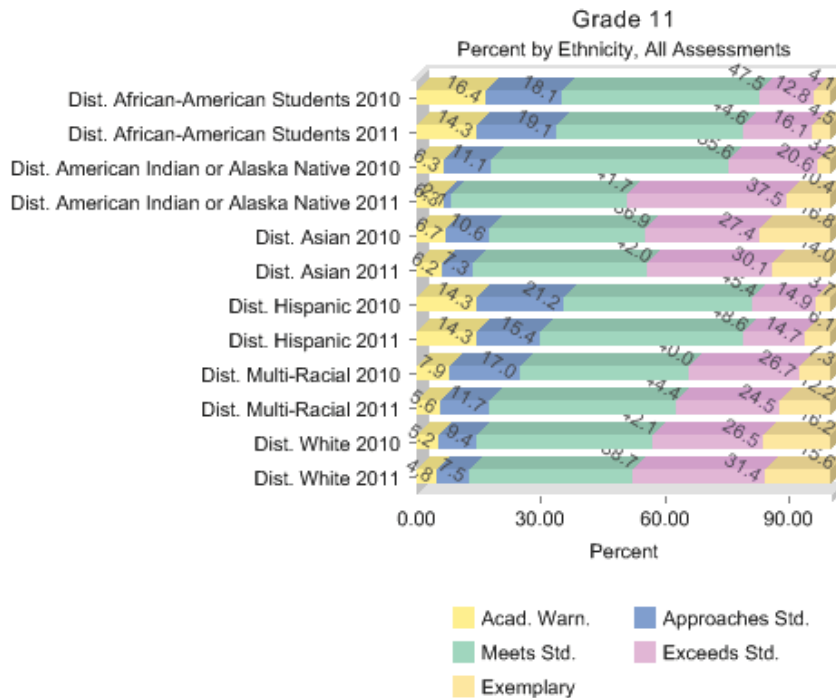
(316) 973-4000 (316) 973-4595

Title 1 District on Corrective Action.

[Show Buildings](#)

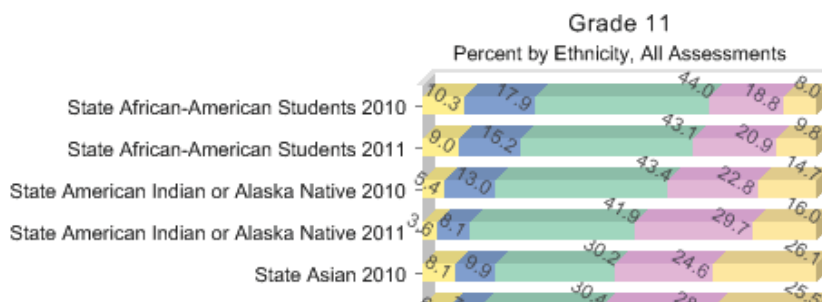
Reading Assessment Results

[Grade 03](#) [Grade 04](#) [Grade 05](#) [Grade 06](#) [Grade 07](#) [Grade 08](#)



[Text Version](#)

State Assessment Results



- ✓ [Race/Ethnicity](#)
- ✓ [Economically Disadvantaged](#)
- ✓ [Students with Disabilities](#)
- ✓ [English Language Learners](#)
- ✓ [Migrant Students](#)
- ✓ [Gender](#)

History - Govt.

- ✓ [All Students](#)
- ✓ [Race/Ethnicity](#)
- ✓ [Economically Disadvantaged](#)
- ✓ [Students with Disabilities](#)
- ✓ [English Language Learners](#)
- ✓ [Migrant Students](#)
- ✓ [Gender](#)

Writing

- ✓ [All Students](#)
- ✓ [Race/Ethnicity](#)
- ✓ [Economically Disadvantaged](#)
- ✓ [Students with Disabilities](#)
- ✓ [English Language Learners](#)
- ✓ [Migrant Students](#)
- ✓ [Gender](#)

Student Participation

- ✓ [Attendance Rate](#)
- ✓ [Graduation Rate](#)

NCLB

- ✓ [Accountability](#)
- ✓ [Title I Schools on Improvement](#)
- ✓ [Requirements of AYP](#)
- ✓ [Teacher Quality](#)
- ✓ [NAEP State Results](#)
- ✓ [2009-10 District IDEA State Perf. Plan](#)

Student Demographics

- ✓ [Enrollment](#)
- ✓ [Race/Ethnicity](#)

[Text Version](#)

Percent Not Tested in 2011:

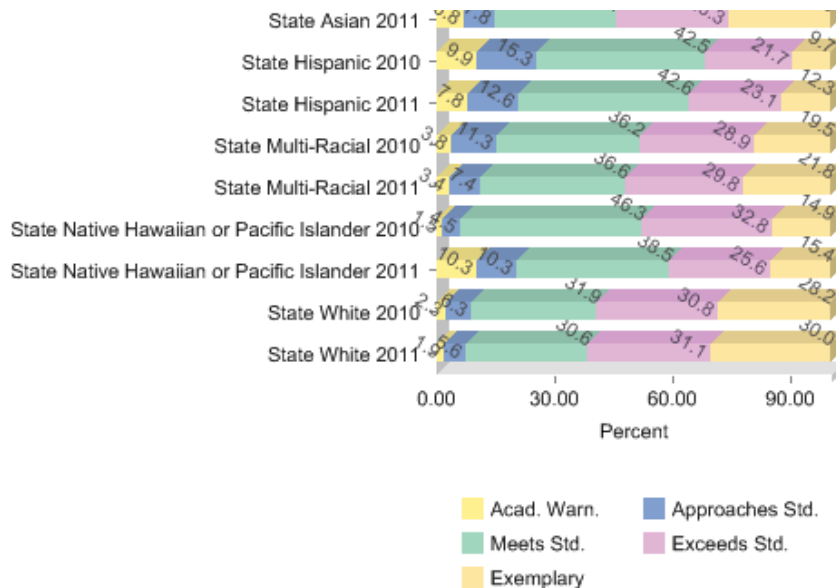
District

African-American Students:	1.4%
Hispanic:	1.0%
White:	2.0%
Asian :	0.5%
American Indian or Alaska Native:	2.1%
Multi-Racial:	1.5%

State

African-American Students:	2.0%
Hispanic:	1.6%
White:	0.9%
Asian :	1.4%
American Indian or Alaska Native:	0.7%
Multi-Racial:	1.0%
Native Hawaiian or Pacific Islander:	0.0%

The assessment results presented on this page include *all* students in the grades tested up to and during the testing window...not just those students enrolled on or before September 20. Slight differences between percentages reported for the assessment results and those reported for Adequate Yearly Progress (AYP) are to be expected. The AYP calculation, as well as the Standard of Excellence calculation, is based upon the results of those students who were enrolled by September 20.



PLEASE NOTE: There may be slight differences between percentages displayed on the Assessment Results pages and those displayed on the Requirements of AYP pages.



District Information

- ✓ [Demographics](#)
- ✓ [Definitions](#)
- ✓ Summary:
 - [2003-2004](#)
 - [2004-2005](#)
 - [2005-2006](#)
 - [2006-2007](#)
 - [2007-2008](#)
 - [2008-2009](#)
 - [2009-2010](#)
 - [2010-2011](#)

USD 259
Wichita
 201 N Water
 Wichita, KS 67202-1292
 (316) 973-4000 (316) 973-4595
Title 1 District on Corrective Action.

[Show Buildings](#)

✓ [Comparative Perf. & Fiscal System](#)

Performance Indicators

Reading

- ✓ [All Students](#)
- ✓ [Race/Ethnicity](#)
- ✓ [Economically Disadvantaged](#)
- ✓ [Students with Disabilities](#)
- ✓ [English Language Learners](#)
- ✓ [Migrant Students](#)
- ✓ [Gender](#)

Math

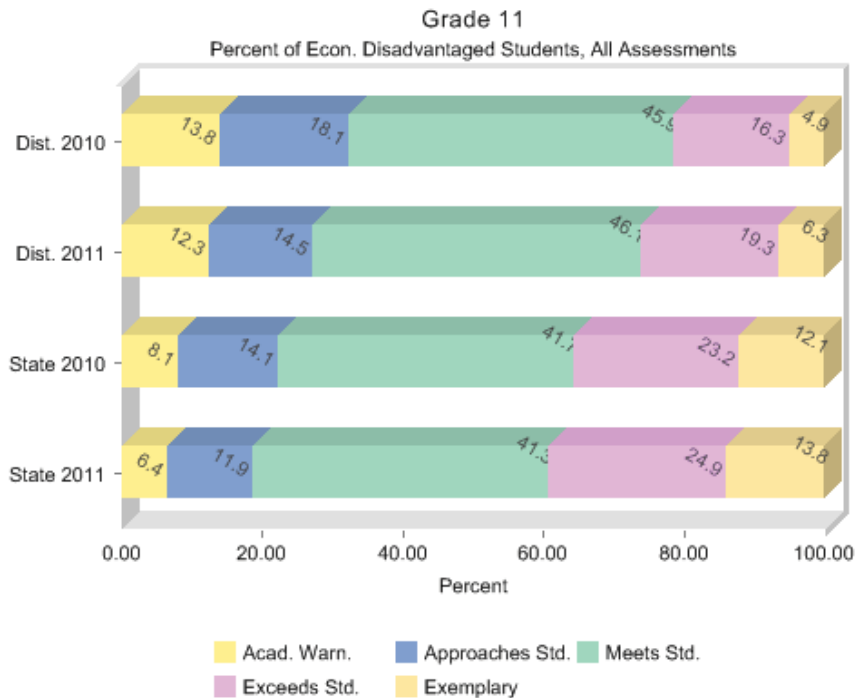
- ✓ [All Students](#)
- ✓ [Race/Ethnicity](#)
- ✓ [Economically Disadvantaged](#)
- ✓ [Students with Disabilities](#)
- ✓ [English Language Learners](#)
- ✓ [Migrant Students](#)
- ✓ [Gender](#)

Science

- ✓ [All Students](#)

Reading Assessment Results

[Grade 03](#) [Grade 04](#) [Grade 05](#) [Grade 06](#) [Grade 07](#) [Grade 08](#)



[Text Version](#)

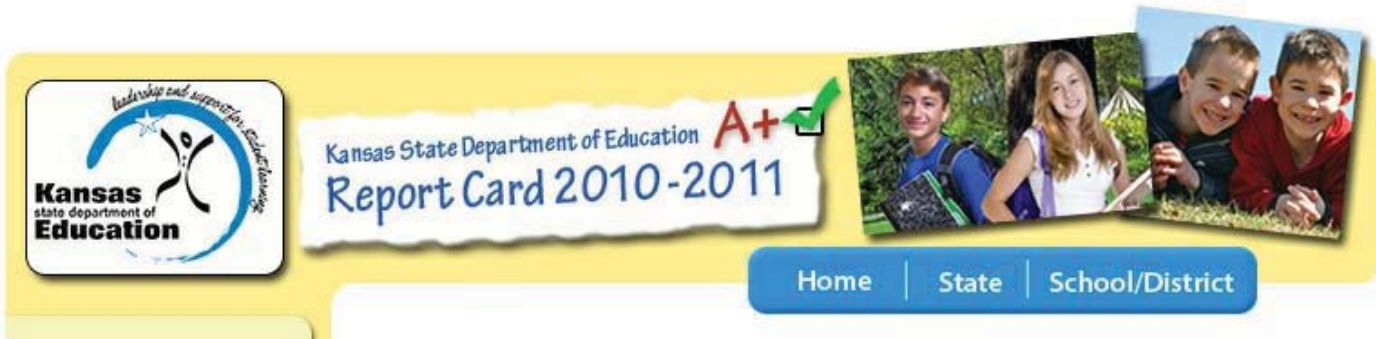
Percent Not Tested in 2011:

District 1.7%

State 1.6%

PLEASE NOTE: There may be slight differences between percentages displayed on the Assessment Results pages and those displayed on the Requirements of AYP pages.

The assessment results presented on this page include *all* students in the grades tested up to and during the testing window...not just those students enrolled on or before September 20. Slight differences between percentages reported for the assessment results and those reported for Adequate Yearly Progress (AYP) are to be expected. The AYP calculation, as well as the Standard of Excellence calculation, is based upon the results of those students who were enrolled by September 20.



District Information

- ✓ [Demographics](#)
- ✓ [Definitions](#)
- ✓ Summary:
 - [2003-2004](#)
 - [2004-2005](#)
 - [2005-2006](#)
 - [2006-2007](#)
 - [2007-2008](#)
 - [2008-2009](#)
 - [2009-2010](#)
 - [2010-2011](#)

USD 259
Wichita
 201 N Water
 Wichita, KS 67202-1292
 (316) 973-4000 (316) 973-4595
Title 1 District on Corrective Action.

[Show Buildings](#)

Reading Assessment Results

[Grade 03](#) [Grade 04](#) [Grade 05](#) [Grade 06](#) [Grade 07](#) [Grade 08](#)

- ✓ [Comparative Perf. & Fiscal System](#)

Performance Indicators

Reading

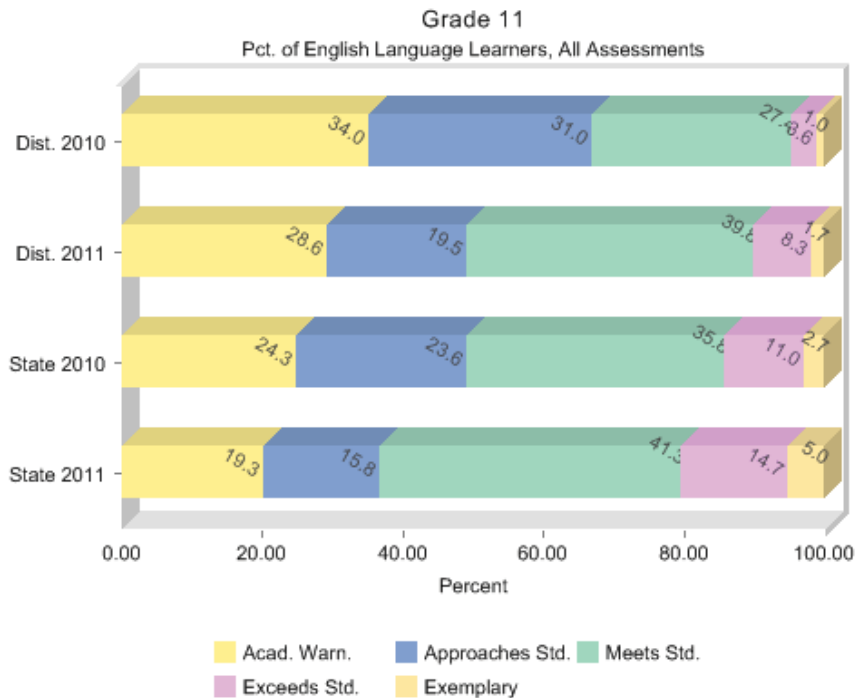
- ✓ [All Students](#)
- ✓ [Race/Ethnicity](#)
- ✓ [Economically Disadvantaged](#)
- ✓ [Students with Disabilities](#)
- ✓ [English Language Learners](#)
- ✓ [Migrant Students](#)
- ✓ [Gender](#)

Math

- ✓ [All Students](#)
- ✓ [Race/Ethnicity](#)
- ✓ [Economically Disadvantaged](#)
- ✓ [Students with Disabilities](#)
- ✓ [English Language Learners](#)
- ✓ [Migrant Students](#)
- ✓ [Gender](#)

Science

- ✓ [All Students](#)



[Text Version](#)

Percent Not Tested in 2011:

District 2.1%

State 3.9%

PLEASE NOTE: There may be slight differences between percentages displayed on the Assessment Results pages and those displayed on the Requirements of AYP pages.

The assessment results presented on this page include *all* students in the grades tested up to and during the testing window...not just those students enrolled on or before September 20. Slight differences between percentages reported for the assessment results and those reported for Adequate Yearly Progress (AYP) are to be expected. The AYP calculation, as well as the Standard of Excellence calculation, is based upon the results of those students who were enrolled by September 20.



Kansas State Department of Education **A+**
Report Card 2010-2011



[Home](#) | [State](#) | [School/District](#)

District Information

- ✓ [Demographics](#)
- ✓ [Definitions](#)
- ✓ Summary:
 - [2003-2004](#)
 - [2004-2005](#)
 - [2005-2006](#)
 - [2006-2007](#)
 - [2007-2008](#)
 - [2008-2009](#)
 - [2009-2010](#)
 - [2010-2011](#)

USD 259
Wichita
 201 N Water
 Wichita, KS 67202-1292
 (316) 973-4000 (316) 973-4595
Title 1 District on Corrective Action.

[Show Buildings](#)

✓ [Comparative Perf. & Fiscal System](#)

Performance Indicators

Reading

- ✓ [All Students](#)
- ✓ [Race/Ethnicity](#)
- ✓ [Economically Disadvantaged](#)
- ✓ [Students with Disabilities](#)
- ✓ [English Language Learners](#)
- ✓ [Migrant Students](#)
- ✓ [Gender](#)

Math

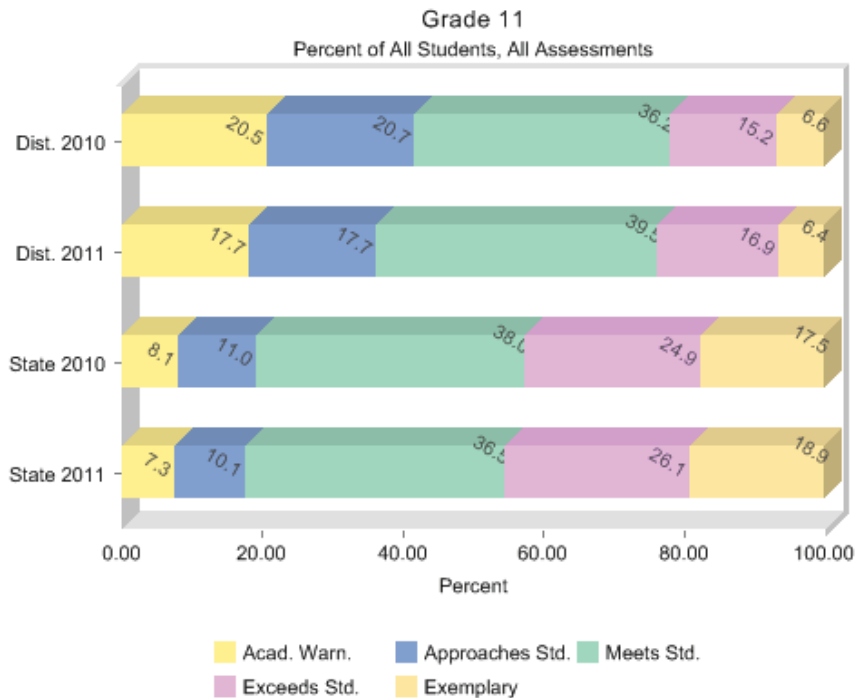
- ✓ [All Students](#)
- ✓ [Race/Ethnicity](#)
- ✓ [Economically Disadvantaged](#)
- ✓ [Students with Disabilities](#)
- ✓ [English Language Learners](#)
- ✓ [Migrant Students](#)
- ✓ [Gender](#)

Science

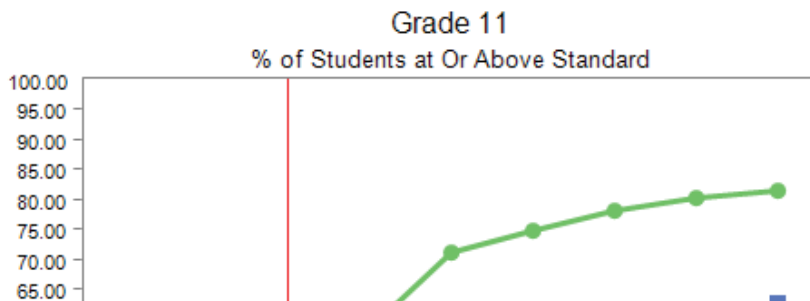
- ✓ [All Students](#)

Math Assessment Results

[Grade 03](#) [Grade 04](#) [Grade 05](#) [Grade 06](#) [Grade 07](#) [Grade 08](#)



[Text Version](#)



- ✓ [Race/Ethnicity](#)
- ✓ [Economically Disadvantaged](#)
- ✓ [Students with Disabilities](#)
- ✓ [English Language Learners](#)
- ✓ [Migrant Students](#)
- ✓ [Gender](#)

History - Govt.

- ✓ [All Students](#)
- ✓ [Race/Ethnicity](#)
- ✓ [Economically Disadvantaged](#)
- ✓ [Students with Disabilities](#)
- ✓ [English Language Learners](#)
- ✓ [Migrant Students](#)
- ✓ [Gender](#)

Writing

- ✓ [All Students](#)
- ✓ [Race/Ethnicity](#)
- ✓ [Economically Disadvantaged](#)
- ✓ [Students with Disabilities](#)
- ✓ [English Language Learners](#)
- ✓ [Migrant Students](#)
- ✓ [Gender](#)

Student

Participation

- ✓ [Attendance Rate](#)
- ✓ [Graduation Rate](#)

NCLB

Accountability

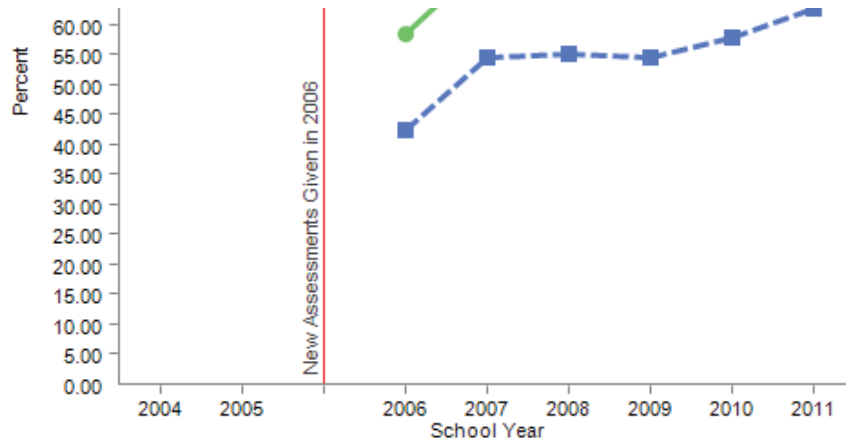
- ✓ [Title I Schools on Improvement](#)
- ✓ [Requirements of AYP](#)
- ✓ [Teacher Quality](#)
- ✓ [NAEP State Results](#)
- ✓ [2009-10 District IDEA State Perf. Plan](#)

Student

Demographics

- ✓ [Enrollment](#)
- ✓ [Race/Ethnicity](#)

District Assessments



	2004	2005	2006	2007	2008	2009	2010	2011
■ Dist. All Students			42.4	54.6	55.2	54.5	58.0	62.8
● State All Students			58.4	71.3	75.0	78.2	80.4	81.5

■ Dist. All Students ● State All Students

[Text Version](#)

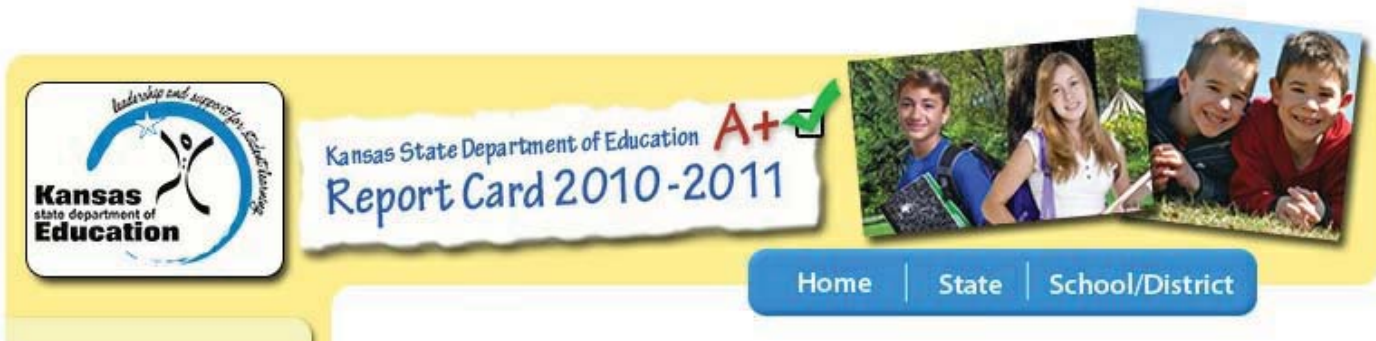
Percent Not Tested in 2011:

District 1.8%

State 1.0%

PLEASE NOTE: There may be slight differences between percentages displayed on the Assessment Results pages and those displayed on the Requirements of AYP pages.

The assessment results presented on this page include *all* students in the grades tested up to and during the testing window...not just those students enrolled on or before September 20. Slight differences between percentages reported for the assessment results and those reported for Adequate Yearly Progress (AYP) are to be expected. The AYP calculation, as well as the Standard of Excellence calculation, is based upon the results of those students who were enrolled by September 20.



District Information

- ✓ [Demographics](#)
- ✓ [Definitions](#)
- ✓ Summary:
 - [2003-2004](#)
 - [2004-2005](#)
 - [2005-2006](#)
 - [2006-2007](#)
 - [2007-2008](#)
 - [2008-2009](#)
 - [2009-2010](#)
 - [2010-2011](#)

USD 259
Wichita
 201 N Water
 Wichita, KS 67202-1292
 (316) 973-4000 (316) 973-4595
Title 1 District on Corrective Action.

[Show Buildings](#)

- ✓ [Comparative Perf. & Fiscal System](#)

Performance Indicators

Reading

- ✓ [All Students](#)
- ✓ [Race/Ethnicity](#)
- ✓ [Economically Disadvantaged](#)
- ✓ [Students with Disabilities](#)
- ✓ [English Language Learners](#)
- ✓ [Migrant Students](#)
- ✓ [Gender](#)

Math

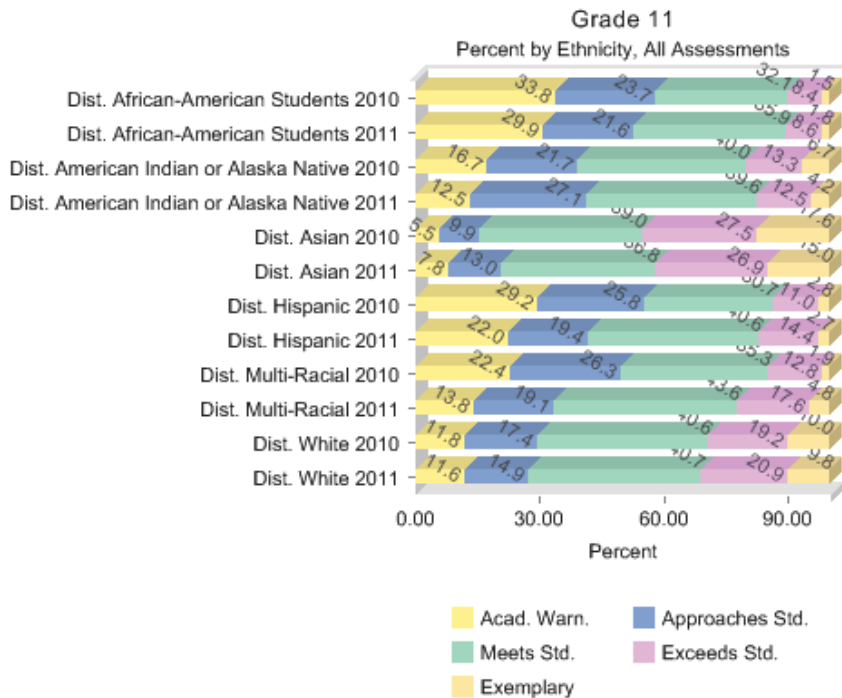
- ✓ [All Students](#)
- ✓ [Race/Ethnicity](#)
- ✓ [Economically Disadvantaged](#)
- ✓ [Students with Disabilities](#)
- ✓ [English Language Learners](#)
- ✓ [Migrant Students](#)
- ✓ [Gender](#)

Science

- ✓ [All Students](#)

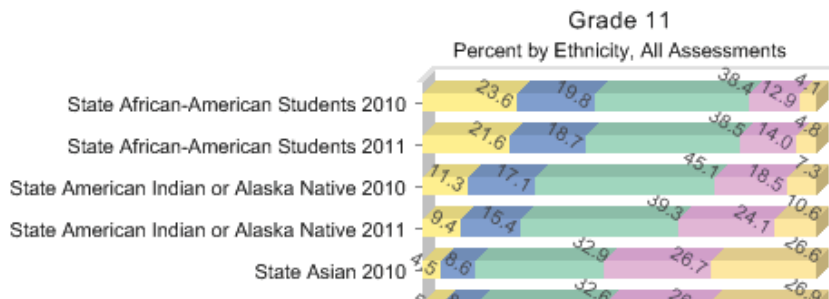
Math Assessment Results

[Grade 03](#) [Grade 04](#) [Grade 05](#) [Grade 06](#) [Grade 07](#) [Grade 08](#)



[Text Version](#)

State Assessment Results



- ✓ [Race/Ethnicity](#)
- ✓ [Economically Disadvantaged](#)
- ✓ [Students with Disabilities](#)
- ✓ [English Language Learners](#)
- ✓ [Migrant Students](#)
- ✓ [Gender](#)

History - Govt.

- ✓ [All Students](#)
- ✓ [Race/Ethnicity](#)
- ✓ [Economically Disadvantaged](#)
- ✓ [Students with Disabilities](#)
- ✓ [English Language Learners](#)
- ✓ [Migrant Students](#)
- ✓ [Gender](#)

Writing

- ✓ [All Students](#)
- ✓ [Race/Ethnicity](#)
- ✓ [Economically Disadvantaged](#)
- ✓ [Students with Disabilities](#)
- ✓ [English Language Learners](#)
- ✓ [Migrant Students](#)
- ✓ [Gender](#)

Student Participation

- ✓ [Attendance Rate](#)
- ✓ [Graduation Rate](#)

NCLB

- ✓ [Accountability](#)
- ✓ [Title I Schools on Improvement](#)
- ✓ [Requirements of AYP](#)
- ✓ [Teacher Quality](#)
- ✓ [NAEP State Results](#)
- ✓ [2009-10 District IDEA State Perf. Plan](#)

Student Demographics

- ✓ [Enrollment](#)
- ✓ [Race/Ethnicity](#)

[Text Version](#)

Percent Not Tested in 2011:

District

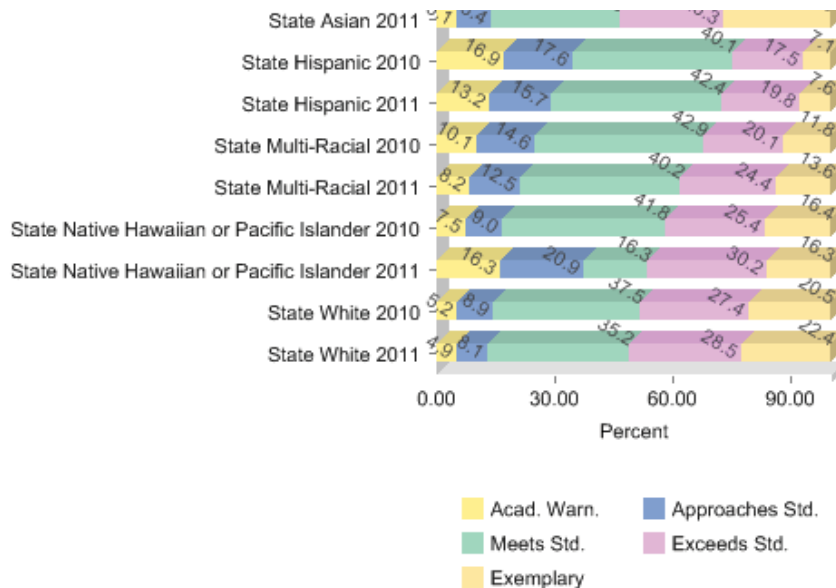
African-American Students:	2.3%
Hispanic:	0.9%
White:	2.2%
Asian :	0.5%
American Indian or Alaska Native:	4.2%
Multi-Racial:	1.1%

State

African-American Students:	2.3%
Hispanic:	1.3%
White:	0.9%
Asian :	0.7%
American Indian or Alaska Native:	1.1%
Multi-Racial:	1.0%
Native Hawaiian or Pacific Islander:	0.0%

The assessment results presented on this page include *all* students in the grades tested up to and during the testing window...not just those students enrolled on or before September 20. Slight differences between percentages reported for the assessment results and those reported for Adequate Yearly Progress (AYP) are to be expected. The AYP calculation, as well as the Standard of Excellence calculation, is based upon the results of those students who were enrolled by September 20.

PLEASE NOTE: There may be slight differences between percentages displayed on the Assessment Results pages and those displayed on the Requirements of AYP pages.





District Information

- ✓ [Demographics](#)
- ✓ [Definitions](#)
- ✓ Summary:
 - [2003-2004](#)
 - [2004-2005](#)
 - [2005-2006](#)
 - [2006-2007](#)
 - [2007-2008](#)
 - [2008-2009](#)
 - [2009-2010](#)
 - [2010-2011](#)

USD 259
Wichita
 201 N Water
 Wichita, KS 67202-1292
 (316) 973-4000 (316) 973-4595
Title 1 District on Corrective Action.

[Show Buildings](#)

[Home](#) | [State](#) | [School/District](#)

Math Assessment Results

[Grade 03](#) [Grade 04](#) [Grade 05](#) [Grade 06](#) [Grade 07](#) [Grade 08](#)

- ✓ [Comparative Perf. & Fiscal System](#)

Performance Indicators

Reading

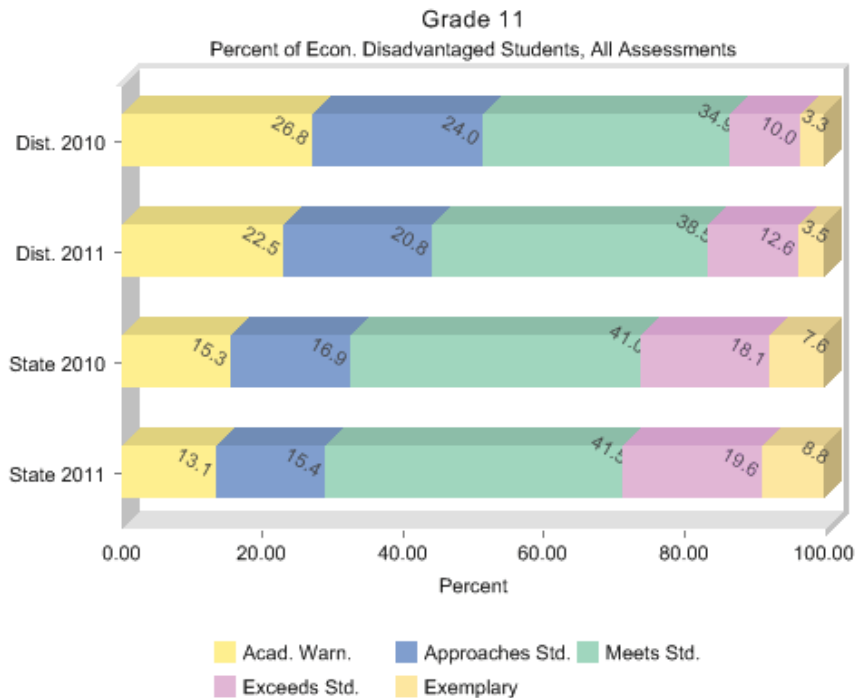
- ✓ [All Students](#)
- ✓ [Race/Ethnicity](#)
- ✓ [Economically Disadvantaged](#)
- ✓ [Students with Disabilities](#)
- ✓ [English Language Learners](#)
- ✓ [Migrant Students](#)
- ✓ [Gender](#)

Math

- ✓ [All Students](#)
- ✓ [Race/Ethnicity](#)
- ✓ [Economically Disadvantaged](#)
- ✓ [Students with Disabilities](#)
- ✓ [English Language Learners](#)
- ✓ [Migrant Students](#)
- ✓ [Gender](#)

Science

- ✓ [All Students](#)



[Text Version](#)

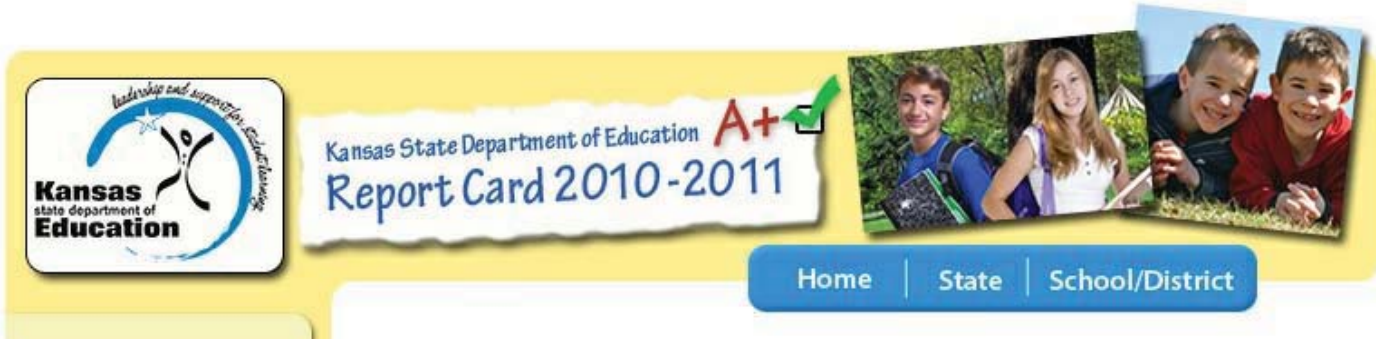
Percent Not Tested in 2011:

District 2.2%

State 1.7%

PLEASE NOTE: There may be slight differences between percentages displayed on the Assessment Results pages and those displayed on the Requirements of AYP pages.

The assessment results presented on this page include *all* students in the grades tested up to and during the testing window...not just those students enrolled on or before September 20. Slight differences between percentages reported for the assessment results and those reported for Adequate Yearly Progress (AYP) are to be expected. The AYP calculation, as well as the Standard of Excellence calculation, is based upon the results of those students who were enrolled by September 20.



District Information

- ✓ [Demographics](#)
- ✓ [Definitions](#)
- ✓ Summary:
 - [2003-2004](#)
 - [2004-2005](#)
 - [2005-2006](#)
 - [2006-2007](#)
 - [2007-2008](#)
 - [2008-2009](#)
 - [2009-2010](#)
 - [2010-2011](#)

USD 259
Wichita
 201 N Water
 Wichita, KS 67202-1292
 (316) 973-4000 (316) 973-4595
Title 1 District on Corrective Action.

[Show Buildings](#)

[Home](#) | [State](#) | [School/District](#)

Math Assessment Results

[Grade 03](#) [Grade 04](#) [Grade 05](#) [Grade 06](#) [Grade 07](#) [Grade 08](#)

- ✓ [Comparative Perf. & Fiscal System](#)

Performance Indicators

Reading

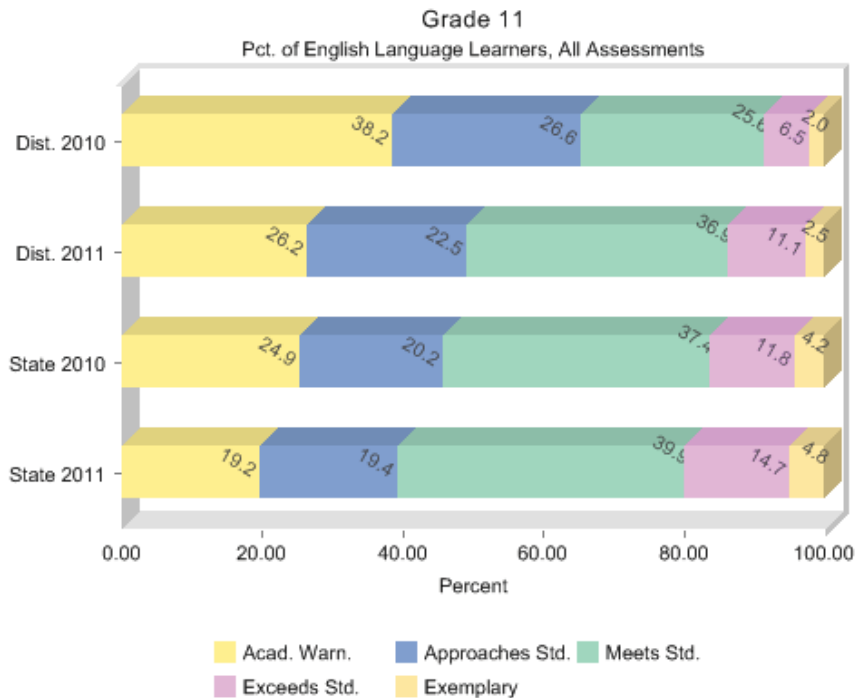
- ✓ [All Students](#)
- ✓ [Race/Ethnicity](#)
- ✓ [Economically Disadvantaged](#)
- ✓ [Students with Disabilities](#)
- ✓ [English Language Learners](#)
- ✓ [Migrant Students](#)
- ✓ [Gender](#)

Math

- ✓ [All Students](#)
- ✓ [Race/Ethnicity](#)
- ✓ [Economically Disadvantaged](#)
- ✓ [Students with Disabilities](#)
- ✓ [English Language Learners](#)
- ✓ [Migrant Students](#)
- ✓ [Gender](#)

Science

- ✓ [All Students](#)



[Text Version](#)

Percent Not Tested in 2011:

District 0.8%

State 2.0%

PLEASE NOTE: There may be slight differences between percentages displayed on the Assessment Results pages and those displayed on the Requirements of AYP pages.

The assessment results presented on this page include *all* students in the grades tested up to and during the testing window...not just those students enrolled on or before September 20. Slight differences between percentages reported for the assessment results and those reported for Adequate Yearly Progress (AYP) are to be expected. The AYP calculation, as well as the Standard of Excellence calculation, is based upon the results of those students who were enrolled by September 20.



Kansas State Department of Education **A+**
Report Card 2010-2011



[Home](#) | [State](#) | [School/District](#)

District Information

- ✓ [Demographics](#)
- ✓ [Definitions](#)
- ✓ Summary:
 - [2003-2004](#)
 - [2004-2005](#)
 - [2005-2006](#)
 - [2006-2007](#)
 - [2007-2008](#)
 - [2008-2009](#)
 - [2009-2010](#)
 - [2010-2011](#)

USD 308
Hutchinson Public Schools
Box 1908
Hutchinson, KS 67504-1908
(620) 615-4000 (620) 615-4016
Title 1 District On Improvement.

[Show Buildings](#)

- ✓ [Comparative Perf. & Fiscal System](#)

Performance Indicators

Reading

- ✓ [All Students](#)
- ✓ [Race/Ethnicity](#)
- ✓ [Economically Disadvantaged](#)
- ✓ [Students with Disabilities](#)
- ✓ [English Language Learners](#)
- ✓ [Migrant Students](#)
- ✓ [Gender](#)

Math

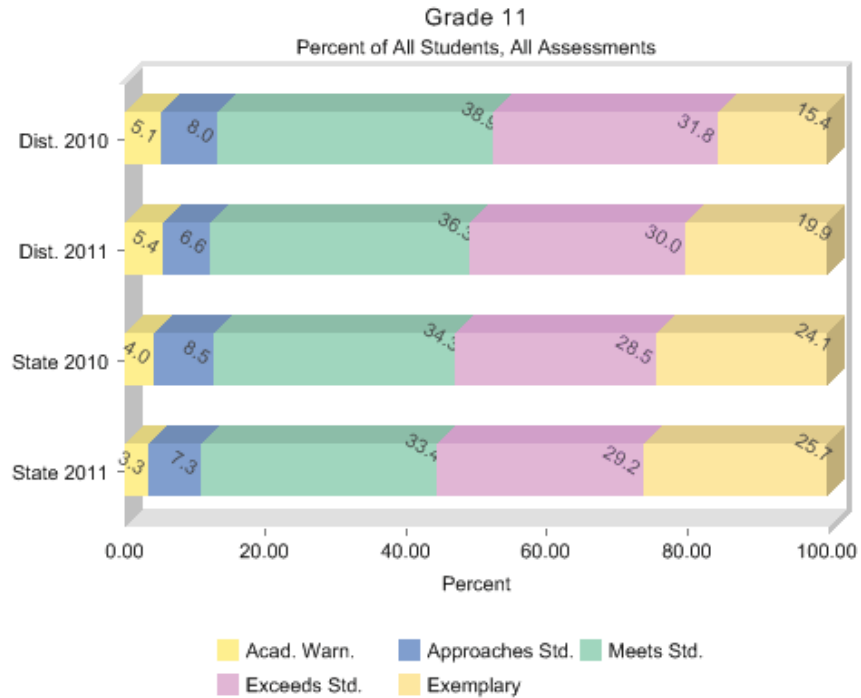
- ✓ [All Students](#)
- ✓ [Race/Ethnicity](#)
- ✓ [Economically Disadvantaged](#)
- ✓ [Students with Disabilities](#)
- ✓ [English Language Learners](#)
- ✓ [Migrant Students](#)
- ✓ [Gender](#)

Science

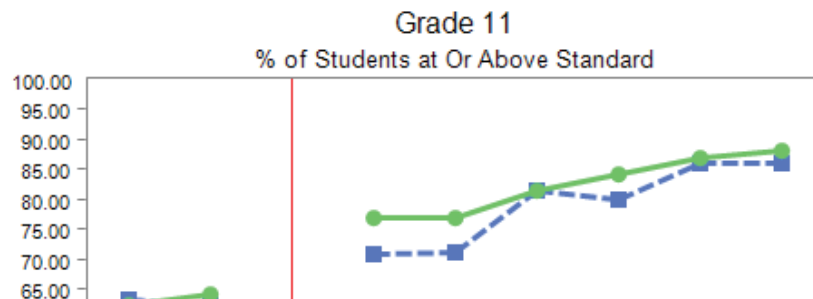
- ✓ [All Students](#)

Reading Assessment Results

[Grade 03](#) [Grade 04](#) [Grade 05](#) [Grade 06](#) [Grade 07](#) [Grade 08](#)



[Text Version](#)



- ✓ [Race/Ethnicity](#)
- ✓ [Economically Disadvantaged](#)
- ✓ [Students with Disabilities](#)
- ✓ [English Language Learners](#)
- ✓ [Migrant Students](#)
- ✓ [Gender](#)

History - Govt.

- ✓ [All Students](#)
- ✓ [Race/Ethnicity](#)
- ✓ [Economically Disadvantaged](#)
- ✓ [Students with Disabilities](#)
- ✓ [English Language Learners](#)
- ✓ [Migrant Students](#)
- ✓ [Gender](#)

Writing

- ✓ [All Students](#)
- ✓ [Race/Ethnicity](#)
- ✓ [Economically Disadvantaged](#)
- ✓ [Students with Disabilities](#)
- ✓ [English Language Learners](#)
- ✓ [Migrant Students](#)
- ✓ [Gender](#)

Student

Participation

- ✓ [Attendance Rate](#)
- ✓ [Graduation Rate](#)

NCLB

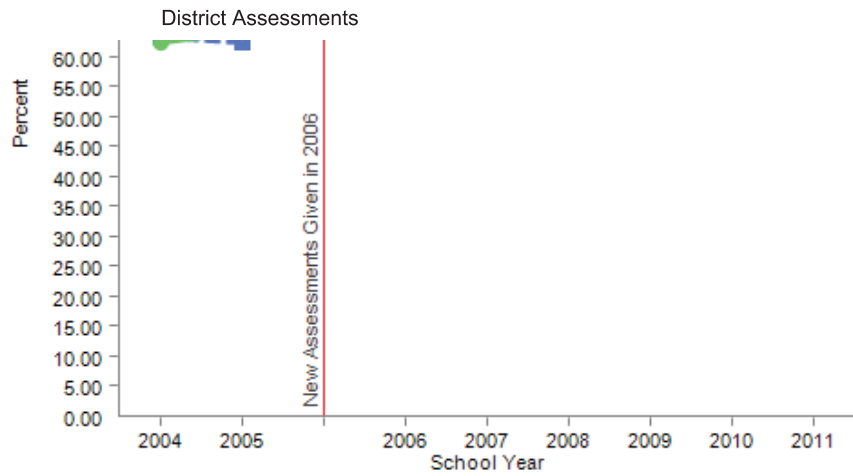
Accountability

- ✓ [Title I Schools on Improvement](#)
- ✓ [Requirements of AYP](#)
- ✓ [Teacher Quality](#)
- ✓ [NAEP State Results](#)
- ✓ [2009-10 District IDEA State Perf. Plan](#)

Student

Demographics

- ✓ [Enrollment](#)
- ✓ [Race/Ethnicity](#)



	2004	2005	2006	2007	2008	2009	2010	2011
■ Dist. All Students	63.4	62.4	70.9	71.1	81.5	79.9	86.2	86.1
◆ State All Students	62.4	64.1	77.1	77.1	81.4	84.3	86.9	88.3

■ Dist. All Students ◆ State All Students

[Text Version](#)

Percent Not Tested in 2011:

District 1.9%

State 1.1%

PLEASE NOTE: There may be slight differences between percentages displayed on the Assessment Results pages and those displayed on the Requirements of AYP pages.

The assessment results presented on this page include *all* students in the grades tested up to and during the testing window...not just those students enrolled on or before September 20. Slight differences between percentages reported for the assessment results and those reported for Adequate Yearly Progress (AYP) are to be expected. The AYP calculation, as well as the Standard of Excellence calculation, is based upon the results of those students who were enrolled by September 20.



Kansas State Department of Education **A+**
Report Card 2010-2011



[Home](#) | [State](#) | [School/District](#)

District Information

- ✓ [Demographics](#)
- ✓ [Definitions](#)
- ✓ Summary:
 - [2003-2004](#)
 - [2004-2005](#)
 - [2005-2006](#)
 - [2006-2007](#)
 - [2007-2008](#)
 - [2008-2009](#)
 - [2009-2010](#)
 - [2010-2011](#)

USD 308
Hutchinson Public Schools
Box 1908
Hutchinson, KS 67504-1908
(620) 615-4000 (620) 615-4016
Title 1 District On Improvement.

[Show Buildings](#)

- ✓ [Comparative Perf. & Fiscal System](#)

Performance Indicators

Reading

- ✓ [All Students](#)
- ✓ [Race/Ethnicity](#)
- ✓ [Economically Disadvantaged](#)
- ✓ [Students with Disabilities](#)
- ✓ [English Language Learners](#)
- ✓ [Migrant Students](#)
- ✓ [Gender](#)

Math

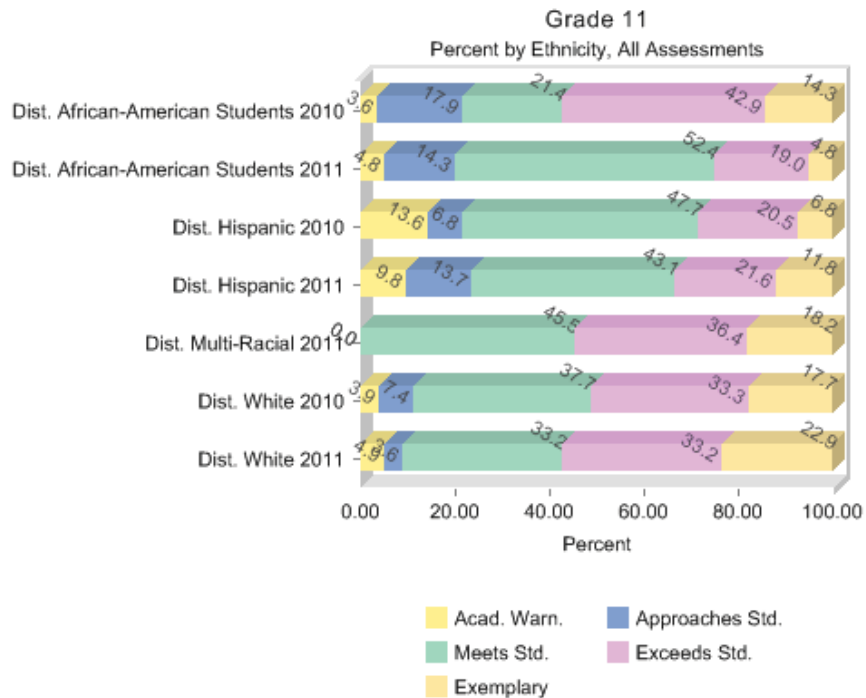
- ✓ [All Students](#)
- ✓ [Race/Ethnicity](#)
- ✓ [Economically Disadvantaged](#)
- ✓ [Students with Disabilities](#)
- ✓ [English Language Learners](#)
- ✓ [Migrant Students](#)
- ✓ [Gender](#)

Science

- ✓ [All Students](#)

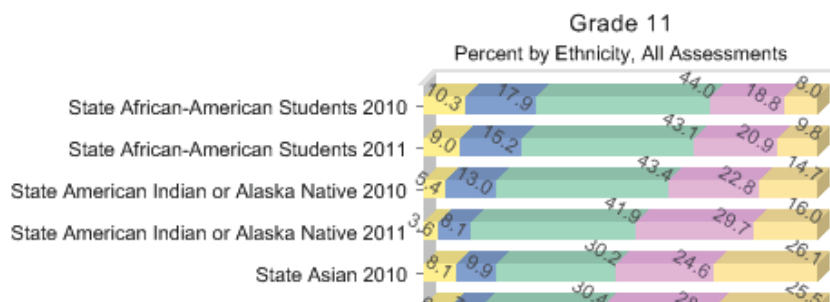
Reading Assessment Results

[Grade 03](#) [Grade 04](#) [Grade 05](#) [Grade 06](#) [Grade 07](#) [Grade 08](#)



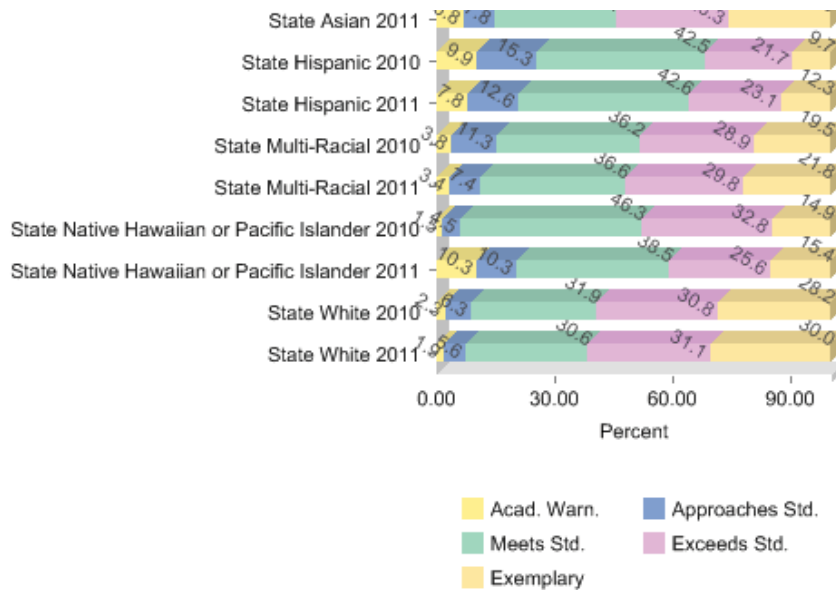
[Text Version](#)

State Assessment Results



District Assessments

- ✓ [Race/Ethnicity](#)
- ✓ [Economically Disadvantaged](#)
- ✓ [Students with Disabilities](#)
- ✓ [English Language Learners](#)
- ✓ [Migrant Students](#)
- ✓ [Gender](#)



History - Govt.

- ✓ [All Students](#)
- ✓ [Race/Ethnicity](#)
- ✓ [Economically Disadvantaged](#)
- ✓ [Students with Disabilities](#)
- ✓ [English Language Learners](#)
- ✓ [Migrant Students](#)
- ✓ [Gender](#)

[Text Version](#)

Percent Not Tested in 2011:

District

African-American Students:	4.8%
Hispanic:	0.0%
White:	2.2%
Multi-Racial:	0.0%

State

African-American Students:	2.0%
Hispanic:	1.6%
White:	0.9%
Asian :	1.4%
American Indian or Alaska Native:	0.7%
Multi-Racial:	1.0%
Native Hawaiian or Pacific Islander:	0.0%

PLEASE NOTE: There may be slight differences between percentages displayed on the Assessment Results pages and those displayed on the Requirements of AYP pages.

Writing

- ✓ [All Students](#)
- ✓ [Race/Ethnicity](#)
- ✓ [Economically Disadvantaged](#)
- ✓ [Students with Disabilities](#)
- ✓ [English Language Learners](#)
- ✓ [Migrant Students](#)
- ✓ [Gender](#)

Student Participation

- ✓ [Attendance Rate](#)
- ✓ [Graduation Rate](#)

NCLB

Accountability

- ✓ [Title I Schools on Improvement](#)
- ✓ [Requirements of AYP](#)
- ✓ [Teacher Quality](#)
- ✓ [NAEP State Results](#)
- ✓ [2009-10 District IDEA State Perf. Plan](#)

Student Demographics

- ✓ [Enrollment](#)
- ✓ [Race/Ethnicity](#)

The assessment results presented on this page include *all* students in the grades tested up to and during the testing window...not just those students enrolled on or before September 20. Slight differences between percentages reported for the assessment results and those reported for Adequate Yearly Progress (AYP) are to be expected. The AYP calculation, as well as the Standard of Excellence calculation, is based upon the results of those students who were enrolled by September 20.



Kansas State Department of Education **A+** Report Card 2010-2011



[Home](#) | [State](#) | [School/District](#)

District Information

- ✓ [Demographics](#)
- ✓ [Definitions](#)
- ✓ Summary:
 - [2003-2004](#)
 - [2004-2005](#)
 - [2005-2006](#)
 - [2006-2007](#)
 - [2007-2008](#)
 - [2008-2009](#)
 - [2009-2010](#)
 - [2010-2011](#)

USD 308
Hutchinson Public Schools
 Box 1908
 Hutchinson, KS 67504-1908
 (620) 615-4000 (620) 615-4016
Title 1 District On Improvement.

[Show Buildings](#)

Reading Assessment Results

[Grade 03](#) [Grade 04](#) [Grade 05](#) [Grade 06](#) [Grade 07](#) [Grade 08](#)

- ✓ [Comparative Perf. & Fiscal System](#)

Performance Indicators

Reading

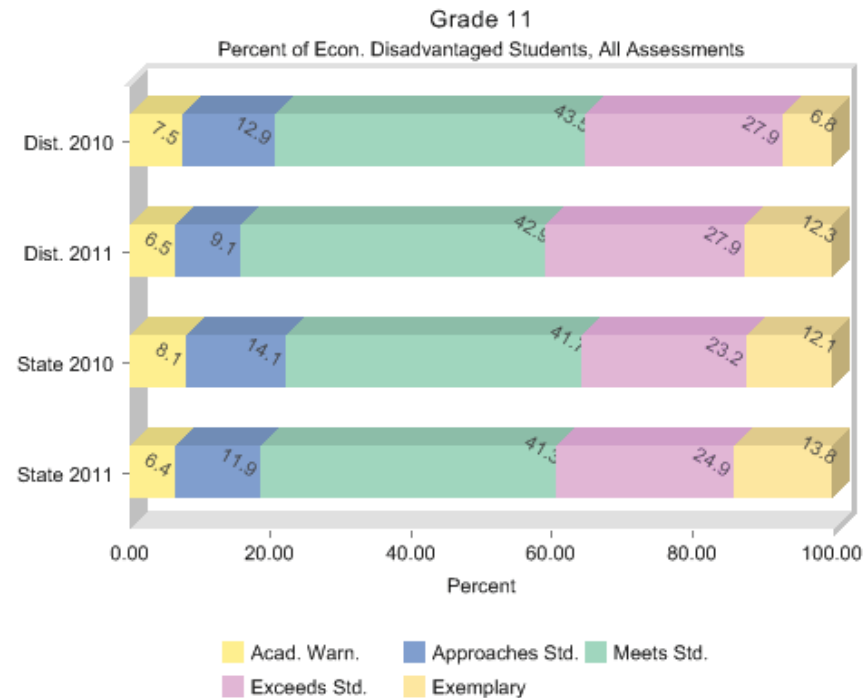
- ✓ [All Students](#)
- ✓ [Race/Ethnicity](#)
- ✓ [Economically Disadvantaged](#)
- ✓ [Students with Disabilities](#)
- ✓ [English Language Learners](#)
- ✓ [Migrant Students](#)
- ✓ [Gender](#)

Math

- ✓ [All Students](#)
- ✓ [Race/Ethnicity](#)
- ✓ [Economically Disadvantaged](#)
- ✓ [Students with Disabilities](#)
- ✓ [English Language Learners](#)
- ✓ [Migrant Students](#)
- ✓ [Gender](#)

Science

- ✓ [All Students](#)



[Text Version](#)

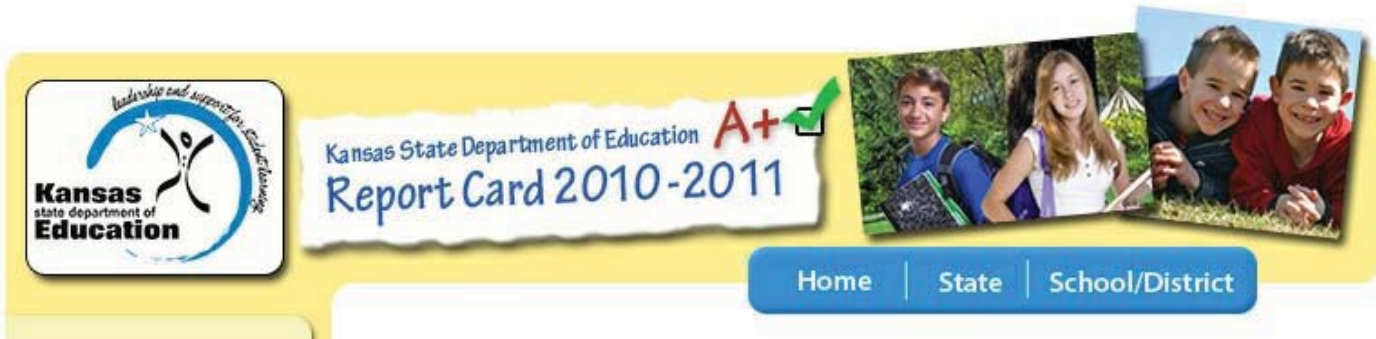
Percent Not Tested in 2011:

District 1.3%

State 1.6%

PLEASE NOTE: There may be slight differences between percentages displayed on the Assessment Results pages and those displayed on the Requirements of AYP pages.

The assessment results presented on this page include *all* students in the grades tested up to and during the testing window...not just those students enrolled on or before September 20. Slight differences between percentages reported for the assessment results and those reported for Adequate Yearly Progress (AYP) are to be expected. The AYP calculation, as well as the Standard of Excellence calculation, is based upon the results of those students who were enrolled by September 20.



District Information

- ✓ [Demographics](#)
- ✓ [Definitions](#)
- ✓ Summary:
 - [2003-2004](#)
 - [2004-2005](#)
 - [2005-2006](#)
 - [2006-2007](#)
 - [2007-2008](#)
 - [2008-2009](#)
 - [2009-2010](#)
 - [2010-2011](#)

USD 308
Hutchinson Public Schools
 Box 1908
 Hutchinson, KS 67504-1908
 (620) 615-4000 (620) 615-4016
Title 1 District On Improvement.

[Show Buildings](#)

Reading Assessment Results

[Grade 03](#) [Grade 04](#) [Grade 05](#) [Grade 06](#) [Grade 07](#) [Grade 08](#)

- ✓ [Comparative Perf. & Fiscal System](#)

Performance Indicators

Reading

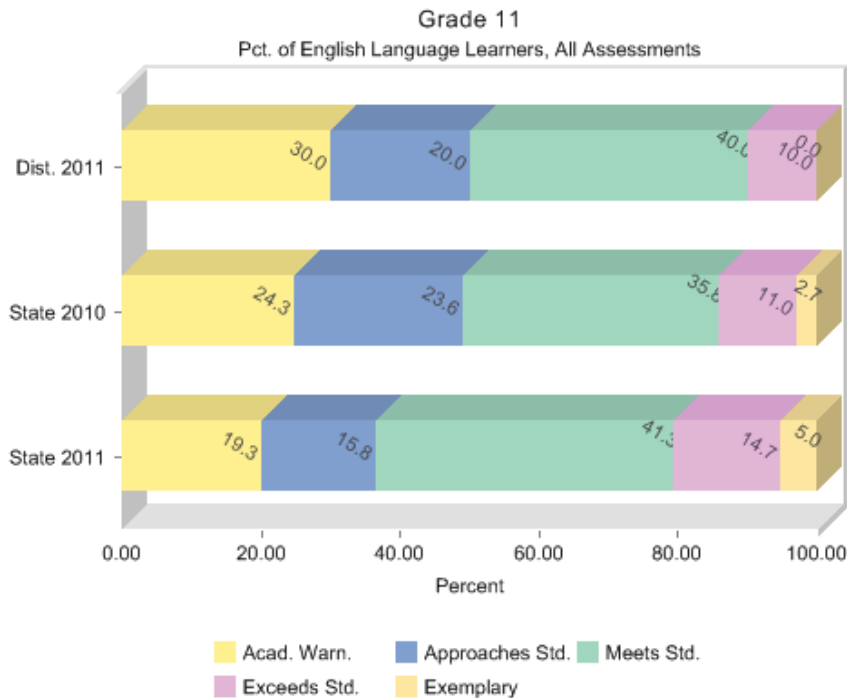
- ✓ [All Students](#)
- ✓ [Race/Ethnicity](#)
- ✓ [Economically Disadvantaged](#)
- ✓ [Students with Disabilities](#)
- ✓ [English Language Learners](#)
- ✓ [Migrant Students](#)
- ✓ [Gender](#)

Math

- ✓ [All Students](#)
- ✓ [Race/Ethnicity](#)
- ✓ [Economically Disadvantaged](#)
- ✓ [Students with Disabilities](#)
- ✓ [English Language Learners](#)
- ✓ [Migrant Students](#)
- ✓ [Gender](#)

Science

- ✓ [All Students](#)



[Text Version](#)

Percent Not Tested in 2011:

District 0.0%

State 3.9%

PLEASE NOTE: There may be slight differences between percentages displayed on the Assessment Results pages and those displayed on the Requirements of AYP pages.

The assessment results presented on this page include *all* students in the grades tested up to and during the testing window...not just those students enrolled on or before September 20. Slight differences between percentages reported for the assessment results and those reported for Adequate Yearly Progress (AYP) are to be expected. The AYP calculation, as well as the Standard of Excellence calculation, is based upon the results of those students who were enrolled by September 20.



Kansas State Department of Education **A+**
Report Card 2010-2011



[Home](#) | [State](#) | [School/District](#)

District Information

- ✓ [Demographics](#)
- ✓ [Definitions](#)
- ✓ Summary:
 - [2003-2004](#)
 - [2004-2005](#)
 - [2005-2006](#)
 - [2006-2007](#)
 - [2007-2008](#)
 - [2008-2009](#)
 - [2009-2010](#)
 - [2010-2011](#)

USD 308
Hutchinson Public Schools
 Box 1908
 Hutchinson, KS 67504-1908
 (620) 615-4000 (620) 615-4016
Title 1 District On Improvement.

[Show Buildings](#)

- ✓ [Comparative Perf. & Fiscal System](#)

Performance Indicators

Reading

- ✓ [All Students](#)
- ✓ [Race/Ethnicity](#)
- ✓ [Economically Disadvantaged](#)
- ✓ [Students with Disabilities](#)
- ✓ [English Language Learners](#)
- ✓ [Migrant Students](#)
- ✓ [Gender](#)

Math

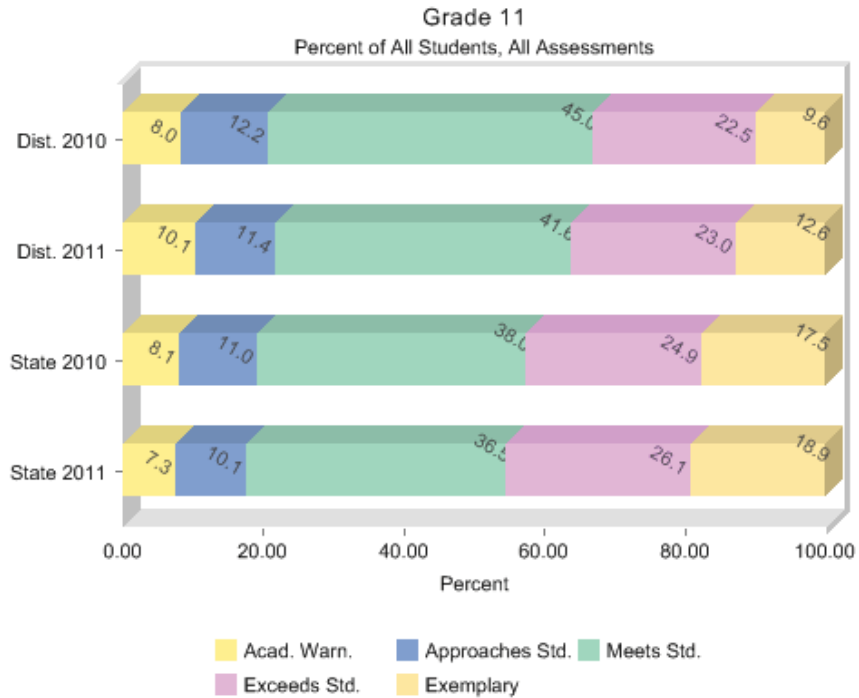
- ✓ [All Students](#)
- ✓ [Race/Ethnicity](#)
- ✓ [Economically Disadvantaged](#)
- ✓ [Students with Disabilities](#)
- ✓ [English Language Learners](#)
- ✓ [Migrant Students](#)
- ✓ [Gender](#)

Science

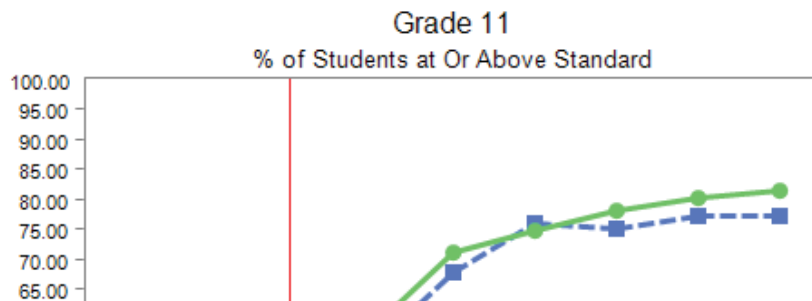
- ✓ [All Students](#)

Math Assessment Results

[Grade 03](#) [Grade 04](#) [Grade 05](#) [Grade 06](#) [Grade 07](#) [Grade 08](#)



[Text Version](#)



- ✓ [Race/Ethnicity](#)
- ✓ [Economically Disadvantaged](#)
- ✓ [Students with Disabilities](#)
- ✓ [English Language Learners](#)
- ✓ [Migrant Students](#)
- ✓ [Gender](#)

History - Govt.

- ✓ [All Students](#)
- ✓ [Race/Ethnicity](#)
- ✓ [Economically Disadvantaged](#)
- ✓ [Students with Disabilities](#)
- ✓ [English Language Learners](#)
- ✓ [Migrant Students](#)
- ✓ [Gender](#)

Writing

- ✓ [All Students](#)
- ✓ [Race/Ethnicity](#)
- ✓ [Economically Disadvantaged](#)
- ✓ [Students with Disabilities](#)
- ✓ [English Language Learners](#)
- ✓ [Migrant Students](#)
- ✓ [Gender](#)

Student

Participation

- ✓ [Attendance Rate](#)
- ✓ [Graduation Rate](#)

NCLB

Accountability

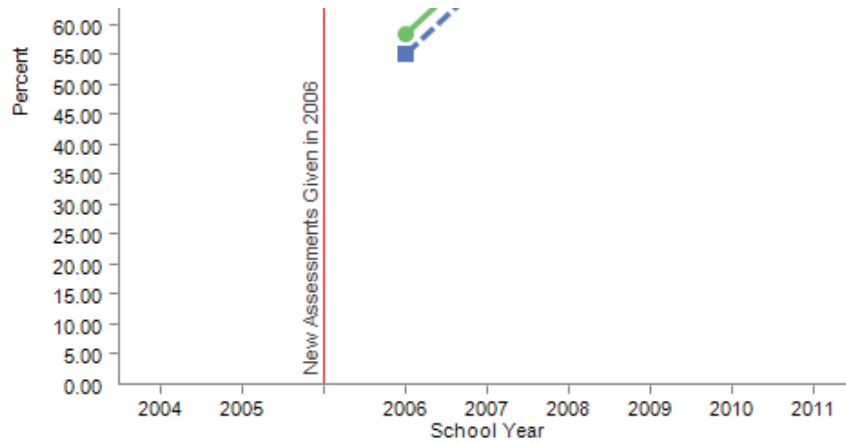
- ✓ [Title I Schools on Improvement](#)
- ✓ [Requirements of AYP](#)
- ✓ [Teacher Quality](#)
- ✓ [NAEP State Results](#)
- ✓ [2009-10 District IDEA State Perf. Plan](#)

Student

Demographics

- ✓ [Enrollment](#)
- ✓ [Race/Ethnicity](#)

District Assessments



	2004	2005	2006	2007	2008	2009	2010	2011
■ Dist. All Students			55.0	68.0	76.0	75.2	77.2	77.3
● State All Students			58.4	71.3	75.0	78.2	80.4	81.5

■ Dist. All Students ● State All Students

[Text Version](#)

Percent Not Tested in 2011:

District 1.3%

State 1.0%

PLEASE NOTE: There may be slight differences between percentages displayed on the Assessment Results pages and those displayed on the Requirements of AYP pages.

The assessment results presented on this page include *all* students in the grades tested up to and during the testing window...not just those students enrolled on or before September 20. Slight differences between percentages reported for the assessment results and those reported for Adequate Yearly Progress (AYP) are to be expected. The AYP calculation, as well as the Standard of Excellence calculation, is based upon the results of those students who were enrolled by September 20.



District Information

- ✓ [Demographics](#)
- ✓ [Definitions](#)
- ✓ Summary:
 - [2003-2004](#)
 - [2004-2005](#)
 - [2005-2006](#)
 - [2006-2007](#)
 - [2007-2008](#)
 - [2008-2009](#)
 - [2009-2010](#)
 - [2010-2011](#)

- ✓ [Comparative Perf. & Fiscal System](#)

Performance Indicators

Reading

- ✓ [All Students](#)
- ✓ [Race/Ethnicity](#)
- ✓ [Economically Disadvantaged](#)
- ✓ [Students with Disabilities](#)
- ✓ [English Language Learners](#)
- ✓ [Migrant Students](#)
- ✓ [Gender](#)

Math

- ✓ [All Students](#)
- ✓ [Race/Ethnicity](#)
- ✓ [Economically Disadvantaged](#)
- ✓ [Students with Disabilities](#)
- ✓ [English Language Learners](#)
- ✓ [Migrant Students](#)
- ✓ [Gender](#)

Science

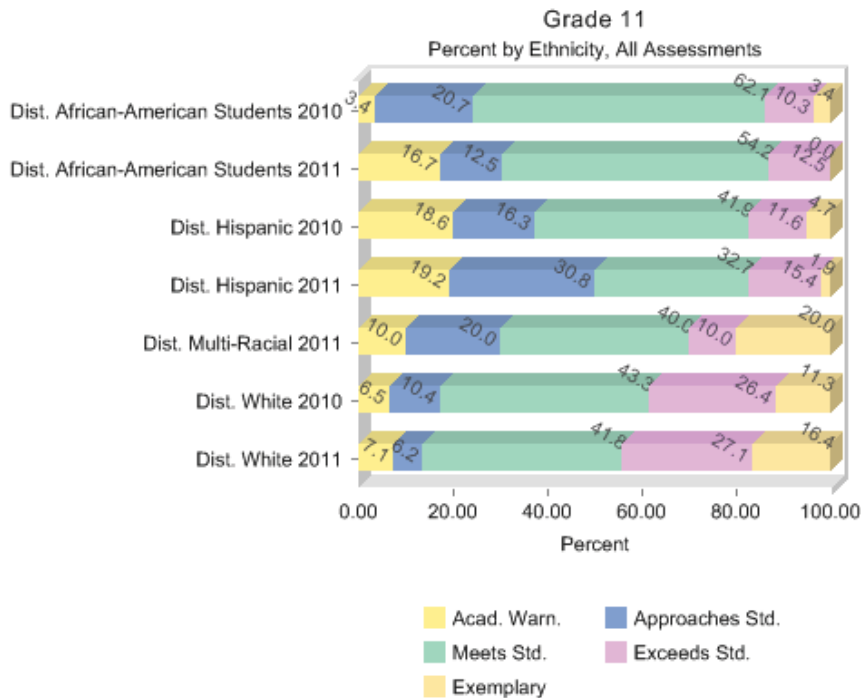
- ✓ [All Students](#)

USD 308
Hutchinson Public Schools
 Box 1908
 Hutchinson, KS 67504-1908
 (620) 615-4000 (620) 615-4016
Title 1 District On Improvement.

[Show Buildings](#)

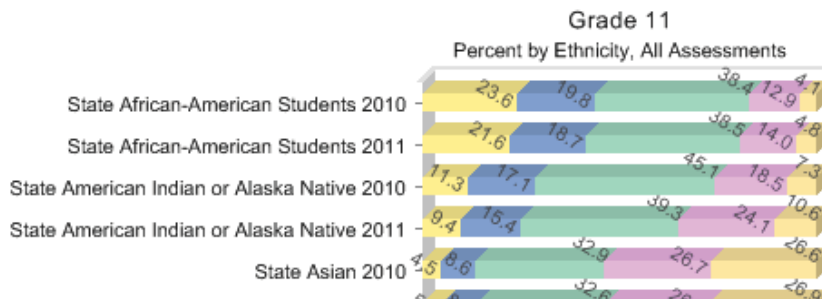
Math Assessment Results

[Grade 03](#) [Grade 04](#) [Grade 05](#) [Grade 06](#) [Grade 07](#) [Grade 08](#)



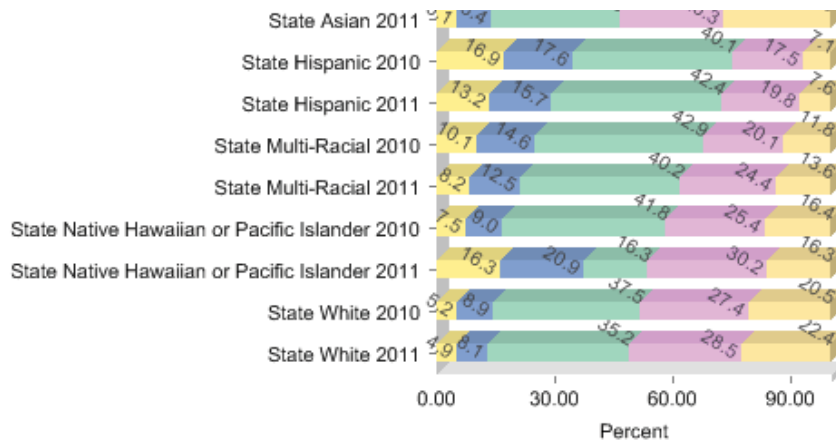
[Text Version](#)

State Assessment Results



District Assessments

- ✓ [Race/Ethnicity](#)
- ✓ [Economically Disadvantaged](#)
- ✓ [Students with Disabilities](#)
- ✓ [English Language Learners](#)
- ✓ [Migrant Students](#)
- ✓ [Gender](#)



History - Govt.

- ✓ [All Students](#)
- ✓ [Race/Ethnicity](#)
- ✓ [Economically Disadvantaged](#)
- ✓ [Students with Disabilities](#)
- ✓ [English Language Learners](#)
- ✓ [Migrant Students](#)
- ✓ [Gender](#)

[Text Version](#)

Percent Not Tested in 2011:

District

African-American Students:	4.2%
Hispanic:	0.0%
White:	1.3%
Multi-Racial:	0.0%

State

African-American Students:	2.3%
Hispanic:	1.3%
White:	0.9%
Asian :	0.7%
American Indian or Alaska Native:	1.1%
Multi-Racial:	1.0%
Native Hawaiian or Pacific Islander:	0.0%

PLEASE NOTE: There may be slight differences between percentages displayed on the Assessment Results pages and those displayed on the Requirements of AYP pages.

Writing

- ✓ [All Students](#)
- ✓ [Race/Ethnicity](#)
- ✓ [Economically Disadvantaged](#)
- ✓ [Students with Disabilities](#)
- ✓ [English Language Learners](#)
- ✓ [Migrant Students](#)
- ✓ [Gender](#)

Student

Participation

- ✓ [Attendance Rate](#)
- ✓ [Graduation Rate](#)

NCLB

Accountability

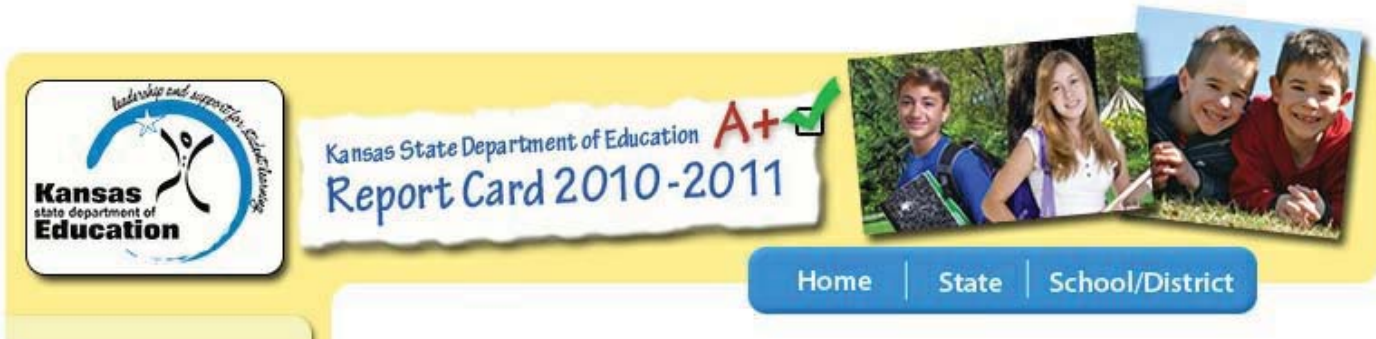
- ✓ [Title I Schools on Improvement](#)
- ✓ [Requirements of AYP](#)
- ✓ [Teacher Quality](#)
- ✓ [NAEP State Results](#)
- ✓ [2009-10 District IDEA State Perf. Plan](#)

Student

Demographics

- ✓ [Enrollment](#)
- ✓ [Race/Ethnicity](#)

The assessment results presented on this page include *all* students in the grades tested up to and during the testing window...not just those students enrolled on or before September 20. Slight differences between percentages reported for the assessment results and those reported for Adequate Yearly Progress (AYP) are to be expected. The AYP calculation, as well as the Standard of Excellence calculation, is based upon the results of those students who were enrolled by September 20.



District Information

- ✓ [Demographics](#)
- ✓ [Definitions](#)
- ✓ Summary:
 - [2003-2004](#)
 - [2004-2005](#)
 - [2005-2006](#)
 - [2006-2007](#)
 - [2007-2008](#)
 - [2008-2009](#)
 - [2009-2010](#)
 - [2010-2011](#)

USD 308
Hutchinson Public Schools
 Box 1908
 Hutchinson, KS 67504-1908
 (620) 615-4000 (620) 615-4016
Title 1 District On Improvement.

[Show Buildings](#)

[Home](#) | [State](#) | [School/District](#)

Math Assessment Results

[Grade 03](#) [Grade 04](#) [Grade 05](#) [Grade 06](#) [Grade 07](#) [Grade 08](#)

- ✓ [Comparative Perf. & Fiscal System](#)

Performance Indicators

Reading

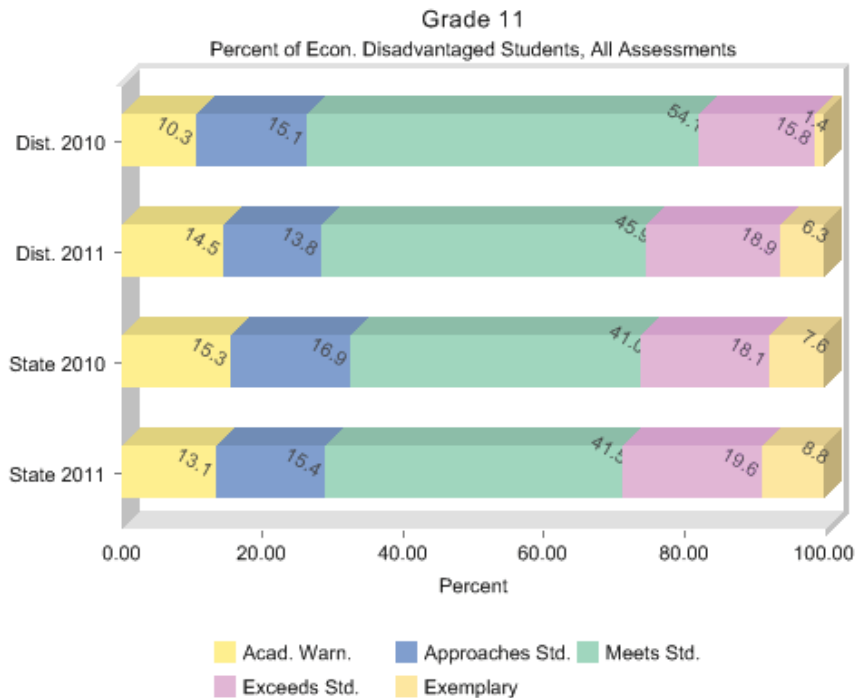
- ✓ [All Students](#)
- ✓ [Race/Ethnicity](#)
- ✓ [Economically Disadvantaged](#)
- ✓ [Students with Disabilities](#)
- ✓ [English Language Learners](#)
- ✓ [Migrant Students](#)
- ✓ [Gender](#)

Math

- ✓ [All Students](#)
- ✓ [Race/Ethnicity](#)
- ✓ [Economically Disadvantaged](#)
- ✓ [Students with Disabilities](#)
- ✓ [English Language Learners](#)
- ✓ [Migrant Students](#)
- ✓ [Gender](#)

Science

- ✓ [All Students](#)



[Text Version](#)

Percent Not Tested in 2011:

District 0.6%

State 1.7%

PLEASE NOTE: There may be slight differences between percentages displayed on the Assessment Results pages and those displayed on the Requirements of AYP pages.

The assessment results presented on this page include *all* students in the grades tested up to and during the testing window...not just those students enrolled on or before September 20. Slight differences between percentages reported for the assessment results and those reported for Adequate Yearly Progress (AYP) are to be expected. The AYP calculation, as well as the Standard of Excellence calculation, is based upon the results of those students who were enrolled by September 20.



District Information

- ✓ [Demographics](#)
- ✓ [Definitions](#)
- ✓ Summary:
 - [2003-2004](#)
 - [2004-2005](#)
 - [2005-2006](#)
 - [2006-2007](#)
 - [2007-2008](#)
 - [2008-2009](#)
 - [2009-2010](#)
 - [2010-2011](#)

USD 308
Hutchinson Public Schools
 Box 1908
 Hutchinson, KS 67504-1908
 (620) 615-4000 (620) 615-4016
Title 1 District On Improvement.

[Show Buildings](#)

Math Assessment Results

[Grade 03](#) [Grade 04](#) [Grade 05](#) [Grade 06](#) [Grade 07](#) [Grade 08](#)

- ✓ [Comparative Perf. & Fiscal System](#)

Performance Indicators

Reading

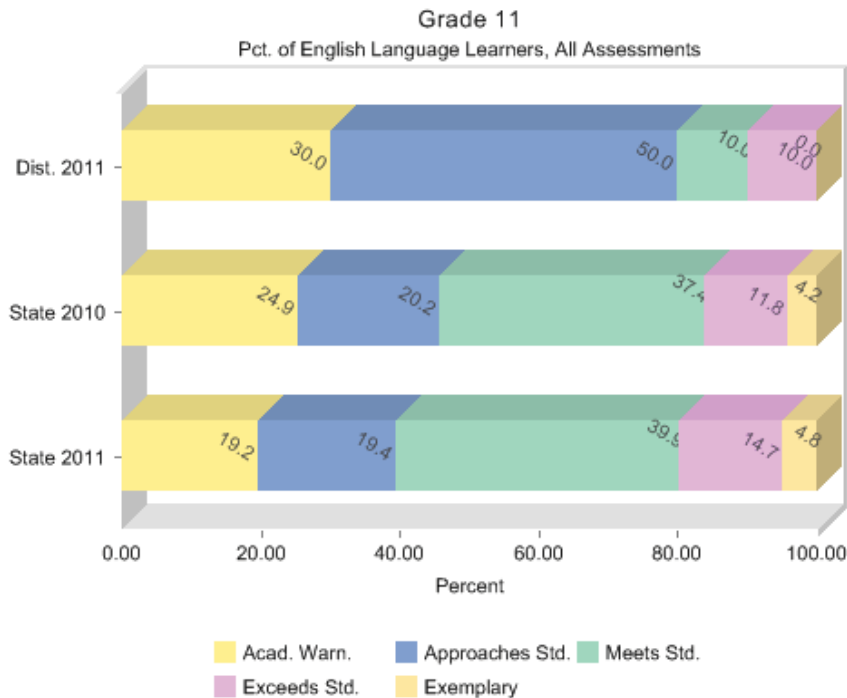
- ✓ [All Students](#)
- ✓ [Race/Ethnicity](#)
- ✓ [Economically Disadvantaged](#)
- ✓ [Students with Disabilities](#)
- ✓ [English Language Learners](#)
- ✓ [Migrant Students](#)
- ✓ [Gender](#)

Math

- ✓ [All Students](#)
- ✓ [Race/Ethnicity](#)
- ✓ [Economically Disadvantaged](#)
- ✓ [Students with Disabilities](#)
- ✓ [English Language Learners](#)
- ✓ [Migrant Students](#)
- ✓ [Gender](#)

Science

- ✓ [All Students](#)



[Text Version](#)

Percent Not Tested in 2011:

District 0.0%

State 2.0%

PLEASE NOTE: There may be slight differences between percentages displayed on the Assessment Results pages and those displayed on the Requirements of AYP pages.

The assessment results presented on this page include *all* students in the grades tested up to and during the testing window...not just those students enrolled on or before September 20. Slight differences between percentages reported for the assessment results and those reported for Adequate Yearly Progress (AYP) are to be expected. The AYP calculation, as well as the Standard of Excellence calculation, is based upon the results of those students who were enrolled by September 20.



District Information

- ✓ [Demographics](#)
- ✓ [Definitions](#)
- ✓ Summary:
 - [2003-2004](#)
 - [2004-2005](#)
 - [2005-2006](#)
 - [2006-2007](#)
 - [2007-2008](#)
 - [2008-2009](#)
 - [2009-2010](#)
 - [2010-2011](#)

USD 443
Dodge City
 Box 460
 Dodge City, KS 67801-0460
 (620) 227-1620 (620) 227-1684
Title 1 District On Improvement.

[Show Buildings](#)

[Home](#) | [State](#) | [School/District](#)

Reading Assessment Results

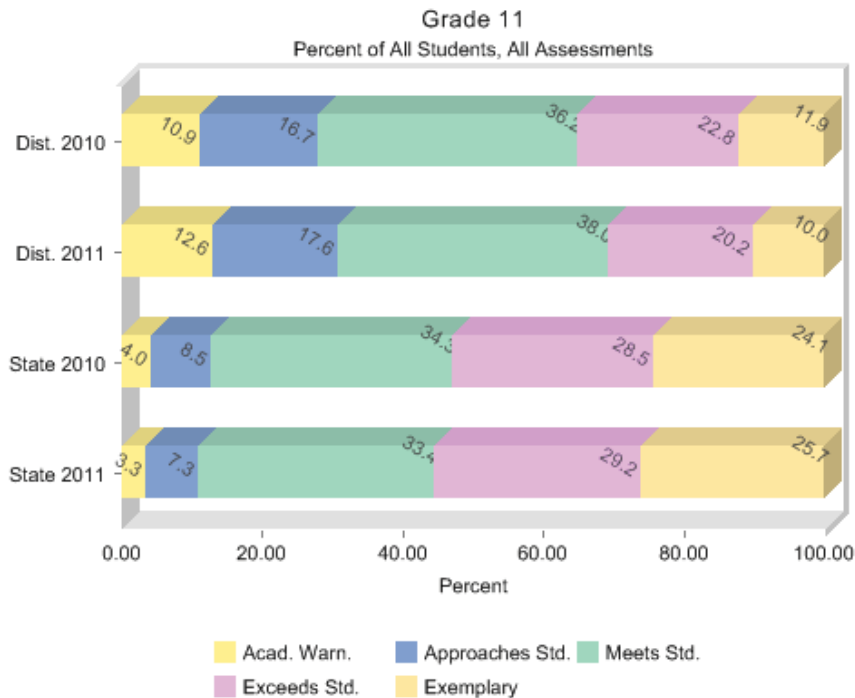
[Grade 03](#) [Grade 04](#) [Grade 05](#) [Grade 06](#) [Grade 07](#) [Grade 08](#)

- ✓ [Comparative Perf. & Fiscal System](#)

Performance Indicators

Reading

- ✓ [All Students](#)
- ✓ [Race/Ethnicity](#)
- ✓ [Economically Disadvantaged](#)
- ✓ [Students with Disabilities](#)
- ✓ [English Language Learners](#)
- ✓ [Migrant Students](#)
- ✓ [Gender](#)



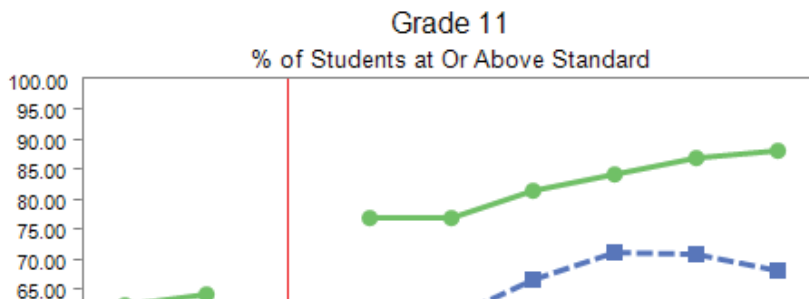
[Text Version](#)

Math

- ✓ [All Students](#)
- ✓ [Race/Ethnicity](#)
- ✓ [Economically Disadvantaged](#)
- ✓ [Students with Disabilities](#)
- ✓ [English Language Learners](#)
- ✓ [Migrant Students](#)
- ✓ [Gender](#)

Science

- ✓ [All Students](#)



- ✓ [Race/Ethnicity](#)
- ✓ [Economically Disadvantaged](#)
- ✓ [Students with Disabilities](#)
- ✓ [English Language Learners](#)
- ✓ [Migrant Students](#)
- ✓ [Gender](#)

History - Govt.

- ✓ [All Students](#)
- ✓ [Race/Ethnicity](#)
- ✓ [Economically Disadvantaged](#)
- ✓ [Students with Disabilities](#)
- ✓ [English Language Learners](#)
- ✓ [Migrant Students](#)
- ✓ [Gender](#)

Writing

- ✓ [All Students](#)
- ✓ [Race/Ethnicity](#)
- ✓ [Economically Disadvantaged](#)
- ✓ [Students with Disabilities](#)
- ✓ [English Language Learners](#)
- ✓ [Migrant Students](#)
- ✓ [Gender](#)

Student

Participation

- ✓ [Attendance Rate](#)
- ✓ [Graduation Rate](#)

NCLB

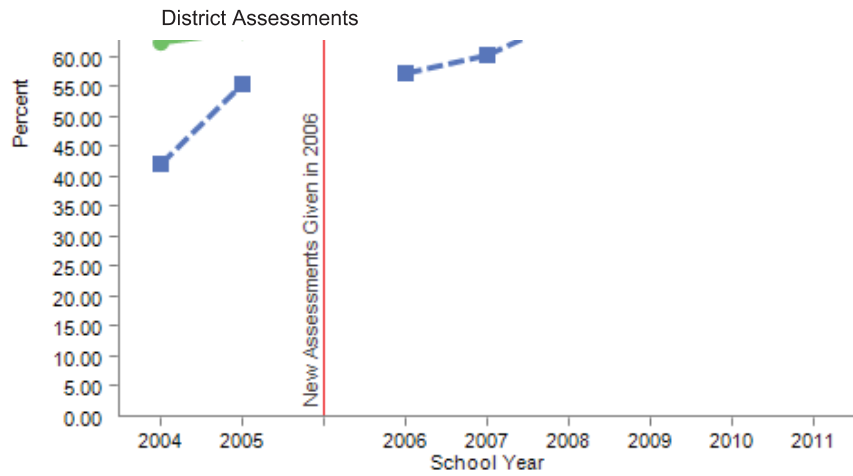
Accountability

- ✓ [Title I Schools on Improvement](#)
- ✓ [Requirements of AYP](#)
- ✓ [Teacher Quality](#)
- ✓ [NAEP State Results](#)
- ✓ [2009-10 District IDEA State Perf. Plan](#)

Student

Demographics

- ✓ [Enrollment](#)
- ✓ [Race/Ethnicity](#)



	2004	2005	2006	2007	2008	2009	2010	2011
Dist. All Students	42.2	55.5	57.2	60.3	66.6	71.2	70.9	68.2
State All Students	62.4	64.1	77.1	77.1	81.4	84.3	86.9	88.3

■ Dist. All Students ◆ State All Students

[Text Version](#)

Percent Not Tested in 2011:

District 1.7%

State 1.1%

PLEASE NOTE: There may be slight differences between percentages displayed on the Assessment Results pages and those displayed on the Requirements of AYP pages.

The assessment results presented on this page include *all* students in the grades tested up to and during the testing window...not just those students enrolled on or before September 20. Slight differences between percentages reported for the assessment results and those reported for Adequate Yearly Progress (AYP) are to be expected. The AYP calculation, as well as the Standard of Excellence calculation, is based upon the results of those students who were enrolled by September 20.



District Information

- ✓ [Demographics](#)
- ✓ [Definitions](#)
- ✓ Summary:
 - [2003-2004](#)
 - [2004-2005](#)
 - [2005-2006](#)
 - [2006-2007](#)
 - [2007-2008](#)
 - [2008-2009](#)
 - [2009-2010](#)
 - [2010-2011](#)

USD 443
Dodge City
 Box 460
 Dodge City, KS 67801-0460
 (620) 227-1620 (620) 227-1684
Title 1 District On Improvement.

[Show Buildings](#)

- ✓ [Comparative Perf. & Fiscal System](#)

Performance Indicators

Reading

- ✓ [All Students](#)
- ✓ [Race/Ethnicity](#)
- ✓ [Economically Disadvantaged](#)
- ✓ [Students with Disabilities](#)
- ✓ [English Language Learners](#)
- ✓ [Migrant Students](#)
- ✓ [Gender](#)

Math

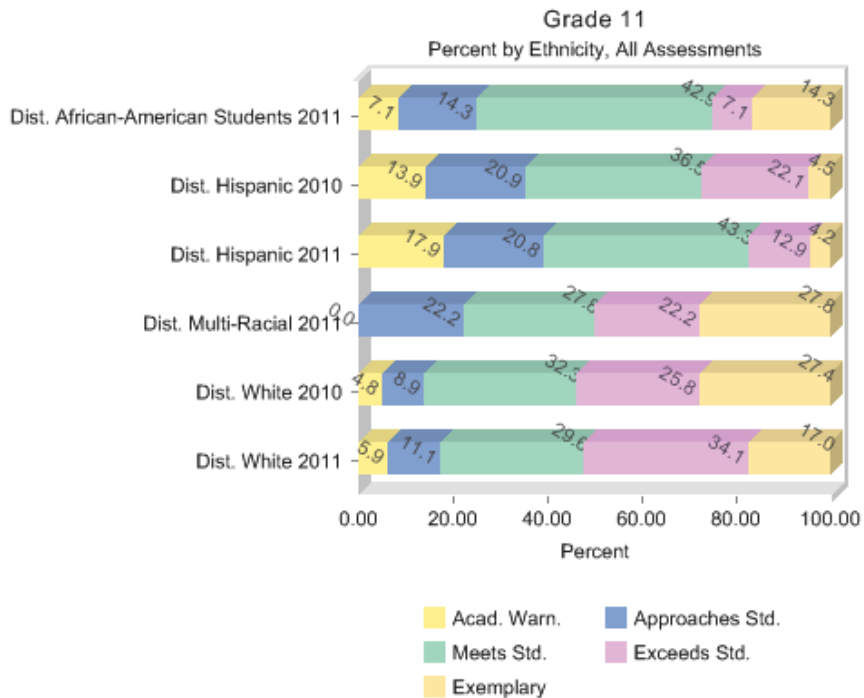
- ✓ [All Students](#)
- ✓ [Race/Ethnicity](#)
- ✓ [Economically Disadvantaged](#)
- ✓ [Students with Disabilities](#)
- ✓ [English Language Learners](#)
- ✓ [Migrant Students](#)
- ✓ [Gender](#)

Science

- ✓ [All Students](#)

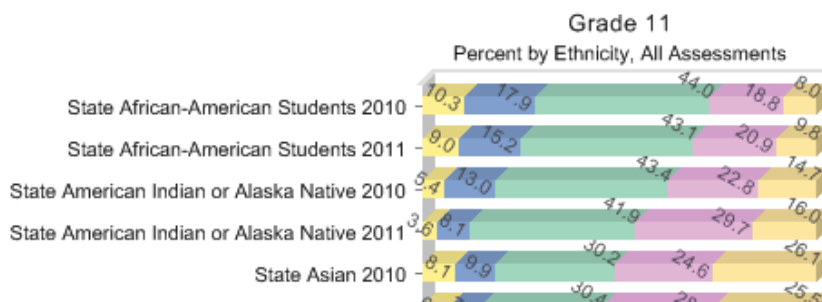
Reading Assessment Results

[Grade 03](#) [Grade 04](#) [Grade 05](#) [Grade 06](#) [Grade 07](#) [Grade 08](#)



[Text Version](#)

State Assessment Results



- ✓ [Race/Ethnicity](#)
- ✓ [Economically Disadvantaged](#)
- ✓ [Students with Disabilities](#)
- ✓ [English Language Learners](#)
- ✓ [Migrant Students](#)
- ✓ [Gender](#)

History - Govt.

- ✓ [All Students](#)
- ✓ [Race/Ethnicity](#)
- ✓ [Economically Disadvantaged](#)
- ✓ [Students with Disabilities](#)
- ✓ [English Language Learners](#)
- ✓ [Migrant Students](#)
- ✓ [Gender](#)

Writing

- ✓ [All Students](#)
- ✓ [Race/Ethnicity](#)
- ✓ [Economically Disadvantaged](#)
- ✓ [Students with Disabilities](#)
- ✓ [English Language Learners](#)
- ✓ [Migrant Students](#)
- ✓ [Gender](#)

Student Participation

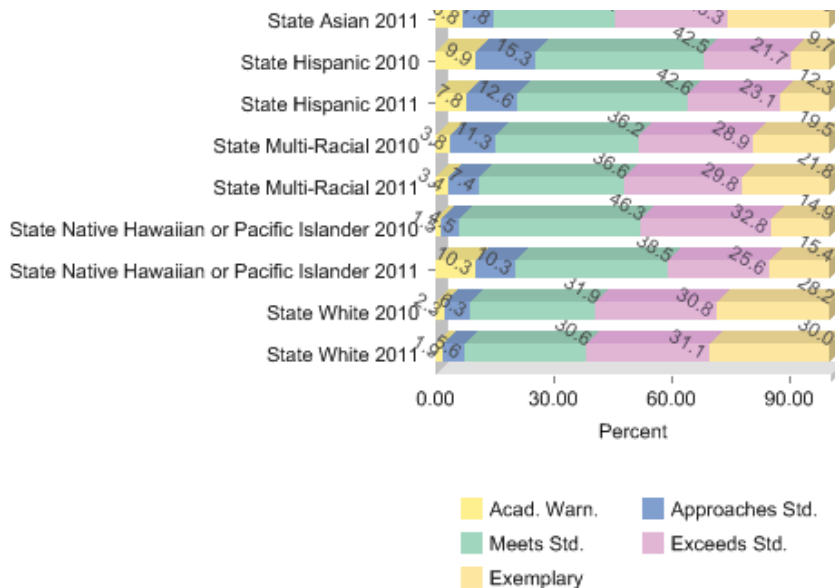
- ✓ [Attendance Rate](#)
- ✓ [Graduation Rate](#)

NCLB

- ✓ [Accountability](#)
- ✓ [Title I Schools on Improvement](#)
- ✓ [Requirements of AYP](#)
- ✓ [Teacher Quality](#)
- ✓ [NAEP State Results](#)
- ✓ [2009-10 District IDEA State Perf. Plan](#)

Student Demographics

- ✓ [Enrollment](#)
- ✓ [Race/Ethnicity](#)



[Text Version](#)

Percent Not Tested in 2011:

District

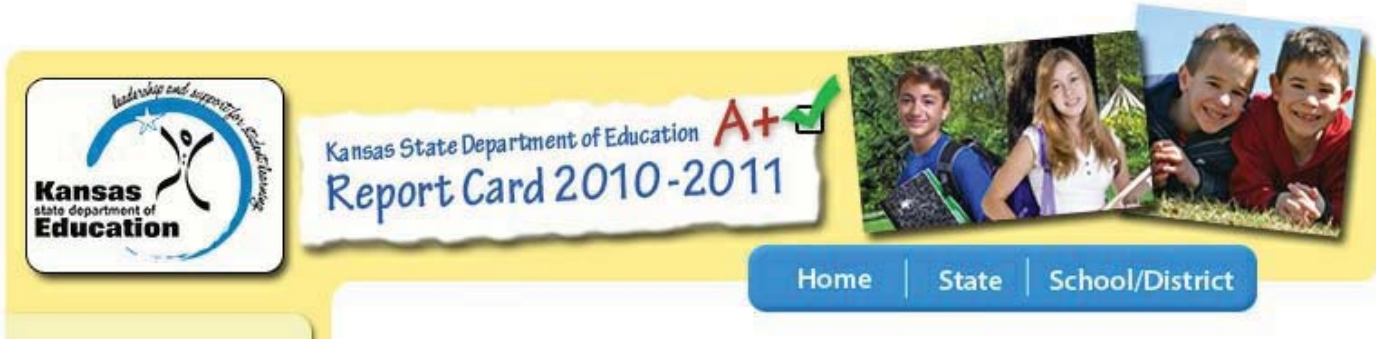
African-American Students:	14.3%
Hispanic:	0.8%
White:	2.2%
Multi-Racial:	0.0%

State

African-American Students:	2.0%
Hispanic:	1.6%
White:	0.9%
Asian :	1.4%
American Indian or Alaska Native:	0.7%
Multi-Racial:	1.0%
Native Hawaiian or Pacific Islander:	0.0%

PLEASE NOTE: There may be slight differences between percentages displayed on the Assessment Results pages and those displayed on the Requirements of AYP pages.

The assessment results presented on this page include *all* students in the grades tested up to and during the testing window...not just those students enrolled on or before September 20. Slight differences between percentages reported for the assessment results and those reported for Adequate Yearly Progress (AYP) are to be expected. The AYP calculation, as well as the Standard of Excellence calculation, is based upon the results of those students who were enrolled by September 20.



District Information

- ✓ [Demographics](#)
- ✓ [Definitions](#)
- ✓ Summary:
 - [2003-2004](#)
 - [2004-2005](#)
 - [2005-2006](#)
 - [2006-2007](#)
 - [2007-2008](#)
 - [2008-2009](#)
 - [2009-2010](#)
 - [2010-2011](#)

USD 443
Dodge City
 Box 460
 Dodge City, KS 67801-0460
 (620) 227-1620 (620) 227-1684
Title 1 District On Improvement.

[Show Buildings](#)

Reading Assessment Results

[Grade 03](#) [Grade 04](#) [Grade 05](#) [Grade 06](#) [Grade 07](#) [Grade 08](#)

- ✓ [Comparative Perf. & Fiscal System](#)

Performance Indicators

Reading

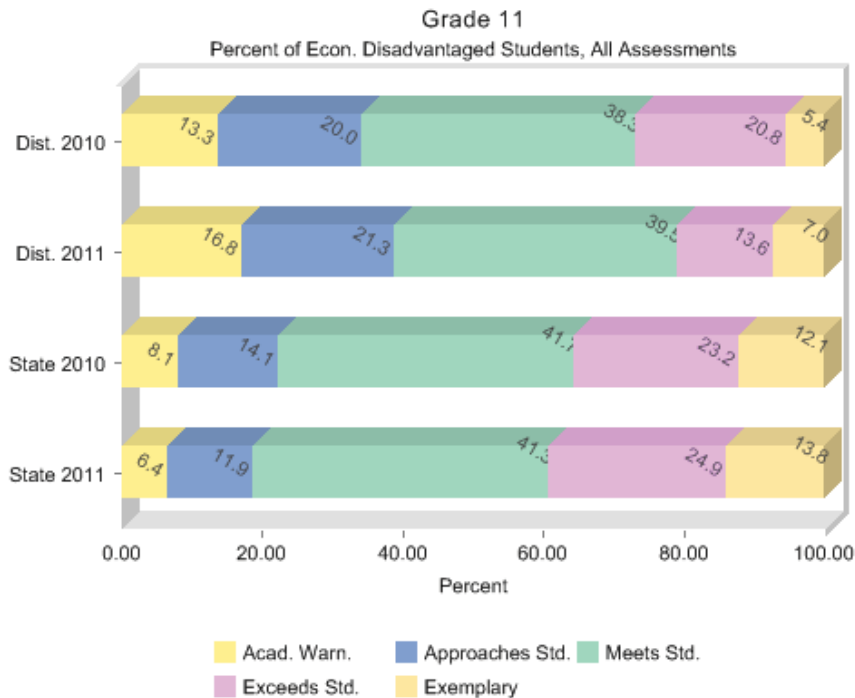
- ✓ [All Students](#)
- ✓ [Race/Ethnicity](#)
- ✓ [Economically Disadvantaged](#)
- ✓ [Students with Disabilities](#)
- ✓ [English Language Learners](#)
- ✓ [Migrant Students](#)
- ✓ [Gender](#)

Math

- ✓ [All Students](#)
- ✓ [Race/Ethnicity](#)
- ✓ [Economically Disadvantaged](#)
- ✓ [Students with Disabilities](#)
- ✓ [English Language Learners](#)
- ✓ [Migrant Students](#)
- ✓ [Gender](#)

Science

- ✓ [All Students](#)



[Text Version](#)

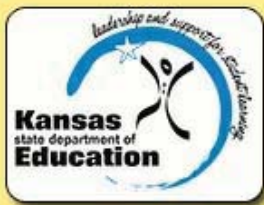
Percent Not Tested in 2011:

District 1.7%

State 1.6%

PLEASE NOTE: There may be slight differences between percentages displayed on the Assessment Results pages and those displayed on the Requirements of AYP pages.

The assessment results presented on this page include *all* students in the grades tested up to and during the testing window...not just those students enrolled on or before September 20. Slight differences between percentages reported for the assessment results and those reported for Adequate Yearly Progress (AYP) are to be expected. The AYP calculation, as well as the Standard of Excellence calculation, is based upon the results of those students who were enrolled by September 20.



Kansas State Department of Education **A+** Report Card 2010-2011



- [Home](#)
- [State](#)
- [School/District](#)

District Information

- ✓ [Demographics](#)
- ✓ [Definitions](#)
- ✓ Summary:
 - [2003-2004](#)
 - [2004-2005](#)
 - [2005-2006](#)
 - [2006-2007](#)
 - [2007-2008](#)
 - [2008-2009](#)
 - [2009-2010](#)
 - [2010-2011](#)

USD 443
Dodge City
 Box 460
 Dodge City, KS 67801-0460
 (620) 227-1620 (620) 227-1684
Title 1 District On Improvement.

[Show Buildings](#)

Reading Assessment Results

- [Grade 03](#)
- [Grade 04](#)
- [Grade 05](#)
- [Grade 06](#)
- [Grade 07](#)
- [Grade 08](#)

- ✓ [Comparative Perf. & Fiscal System](#)

Performance Indicators

Reading

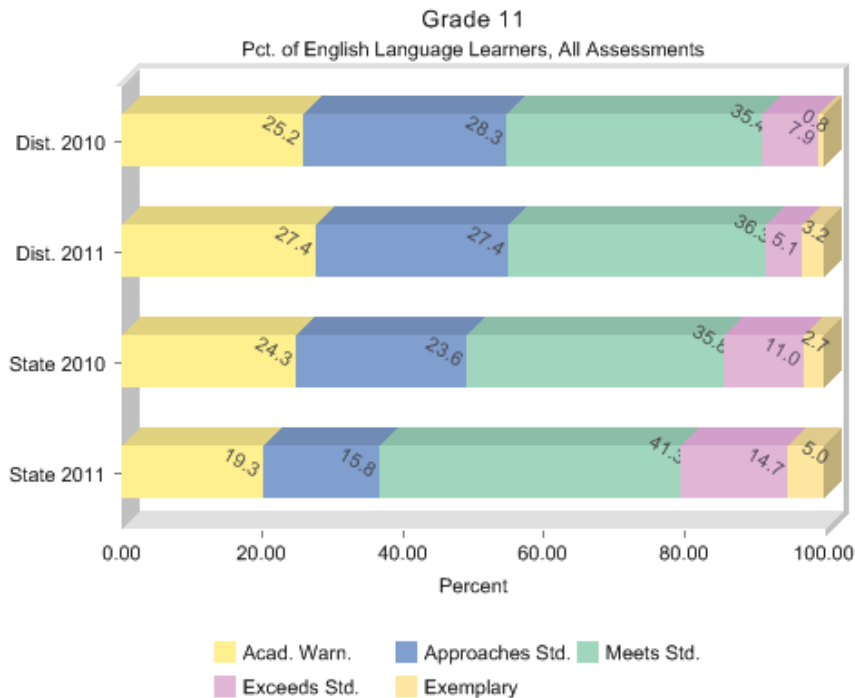
- ✓ [All Students](#)
- ✓ [Race/Ethnicity](#)
- ✓ [Economically Disadvantaged](#)
- ✓ [Students with Disabilities](#)
- ✓ [English Language Learners](#)
- ✓ [Migrant Students](#)
- ✓ [Gender](#)

Math

- ✓ [All Students](#)
- ✓ [Race/Ethnicity](#)
- ✓ [Economically Disadvantaged](#)
- ✓ [Students with Disabilities](#)
- ✓ [English Language Learners](#)
- ✓ [Migrant Students](#)
- ✓ [Gender](#)

Science

- ✓ [All Students](#)



[Text Version](#)

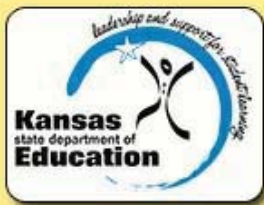
Percent Not Tested in 2011:

District 0.6%

State 3.9%

PLEASE NOTE: There may be slight differences between percentages displayed on the Assessment Results pages and those displayed on the Requirements of AYP pages.

The assessment results presented on this page include *all* students in the grades tested up to and during the testing window...not just those students enrolled on or before September 20. Slight differences between percentages reported for the assessment results and those reported for Adequate Yearly Progress (AYP) are to be expected. The AYP calculation, as well as the Standard of Excellence calculation, is based upon the results of those students who were enrolled by September 20.



Kansas State Department of Education **A+** Report Card 2010-2011



[Home](#) | [State](#) | [School/District](#)

District Information

- ✓ [Demographics](#)
- ✓ [Definitions](#)
- ✓ Summary:
 - [2003-2004](#)
 - [2004-2005](#)
 - [2005-2006](#)
 - [2006-2007](#)
 - [2007-2008](#)
 - [2008-2009](#)
 - [2009-2010](#)
 - [2010-2011](#)

USD 443
Dodge City
 Box 460
 Dodge City, KS 67801-0460
 (620) 227-1620 (620) 227-1684
Title 1 District On Improvement.

[Show Buildings](#)

- ✓ [Comparative Perf. & Fiscal System](#)

Performance Indicators

Reading

- ✓ [All Students](#)
- ✓ [Race/Ethnicity](#)
- ✓ [Economically Disadvantaged](#)
- ✓ [Students with Disabilities](#)
- ✓ [English Language Learners](#)
- ✓ [Migrant Students](#)
- ✓ [Gender](#)

Math

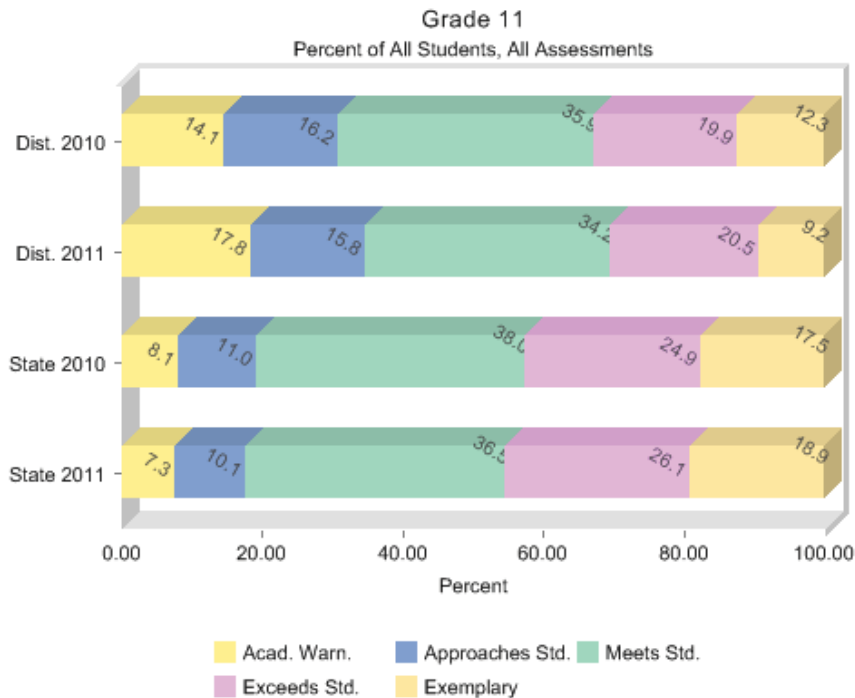
- ✓ [All Students](#)
- ✓ [Race/Ethnicity](#)
- ✓ [Economically Disadvantaged](#)
- ✓ [Students with Disabilities](#)
- ✓ [English Language Learners](#)
- ✓ [Migrant Students](#)
- ✓ [Gender](#)

Science

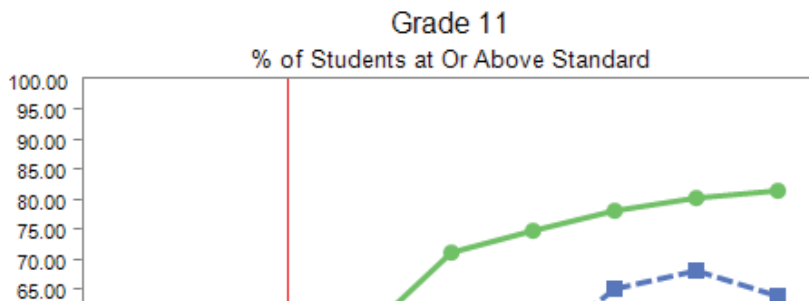
- ✓ [All Students](#)

Math Assessment Results

[Grade 03](#) [Grade 04](#) [Grade 05](#) [Grade 06](#) [Grade 07](#) [Grade 08](#)



[Text Version](#)



- ✓ [Race/Ethnicity](#)
- ✓ [Economically Disadvantaged](#)
- ✓ [Students with Disabilities](#)
- ✓ [English Language Learners](#)
- ✓ [Migrant Students](#)
- ✓ [Gender](#)

History - Govt.

- ✓ [All Students](#)
- ✓ [Race/Ethnicity](#)
- ✓ [Economically Disadvantaged](#)
- ✓ [Students with Disabilities](#)
- ✓ [English Language Learners](#)
- ✓ [Migrant Students](#)
- ✓ [Gender](#)

Writing

- ✓ [All Students](#)
- ✓ [Race/Ethnicity](#)
- ✓ [Economically Disadvantaged](#)
- ✓ [Students with Disabilities](#)
- ✓ [English Language Learners](#)
- ✓ [Migrant Students](#)
- ✓ [Gender](#)

Student

Participation

- ✓ [Attendance Rate](#)
- ✓ [Graduation Rate](#)

NCLB

Accountability

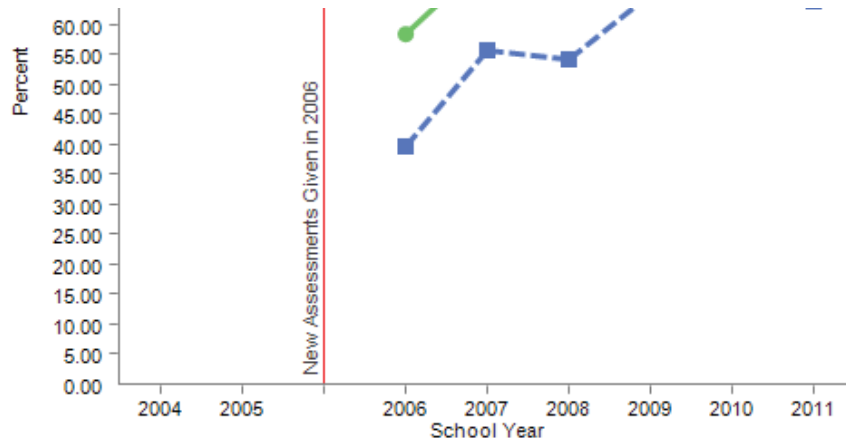
- ✓ [Title I Schools on Improvement](#)
- ✓ [Requirements of AYP](#)
- ✓ [Teacher Quality](#)
- ✓ [NAEP State Results](#)
- ✓ [2009-10 District IDEA State Perf. Plan](#)

Student

Demographics

- ✓ [Enrollment](#)
- ✓ [Race/Ethnicity](#)

District Assessments



	2004	2005	2006	2007	2008	2009	2010	2011
■ Dist. All Students			39.6	55.8	54.3	65.1	68.1	63.9
● State All Students			58.4	71.3	75.0	78.2	80.4	81.5

■ Dist. All Students ● State All Students

[Text Version](#)

Percent Not Tested in 2011:

District 2.5%

State 1.0%

PLEASE NOTE: There may be slight differences between percentages displayed on the Assessment Results pages and those displayed on the Requirements of AYP pages.

The assessment results presented on this page include *all* students in the grades tested up to and during the testing window...not just those students enrolled on or before September 20. Slight differences between percentages reported for the assessment results and those reported for Adequate Yearly Progress (AYP) are to be expected. The AYP calculation, as well as the Standard of Excellence calculation, is based upon the results of those students who were enrolled by September 20.



District Information

- ✓ [Demographics](#)
- ✓ [Definitions](#)
- ✓ Summary:
 - [2003-2004](#)
 - [2004-2005](#)
 - [2005-2006](#)
 - [2006-2007](#)
 - [2007-2008](#)
 - [2008-2009](#)
 - [2009-2010](#)
 - [2010-2011](#)

- ✓ [Comparative Perf. & Fiscal System](#)

Performance Indicators

Reading

- ✓ [All Students](#)
- ✓ [Race/Ethnicity](#)
- ✓ [Economically Disadvantaged](#)
- ✓ [Students with Disabilities](#)
- ✓ [English Language Learners](#)
- ✓ [Migrant Students](#)
- ✓ [Gender](#)

Math

- ✓ [All Students](#)
- ✓ [Race/Ethnicity](#)
- ✓ [Economically Disadvantaged](#)
- ✓ [Students with Disabilities](#)
- ✓ [English Language Learners](#)
- ✓ [Migrant Students](#)
- ✓ [Gender](#)

Science

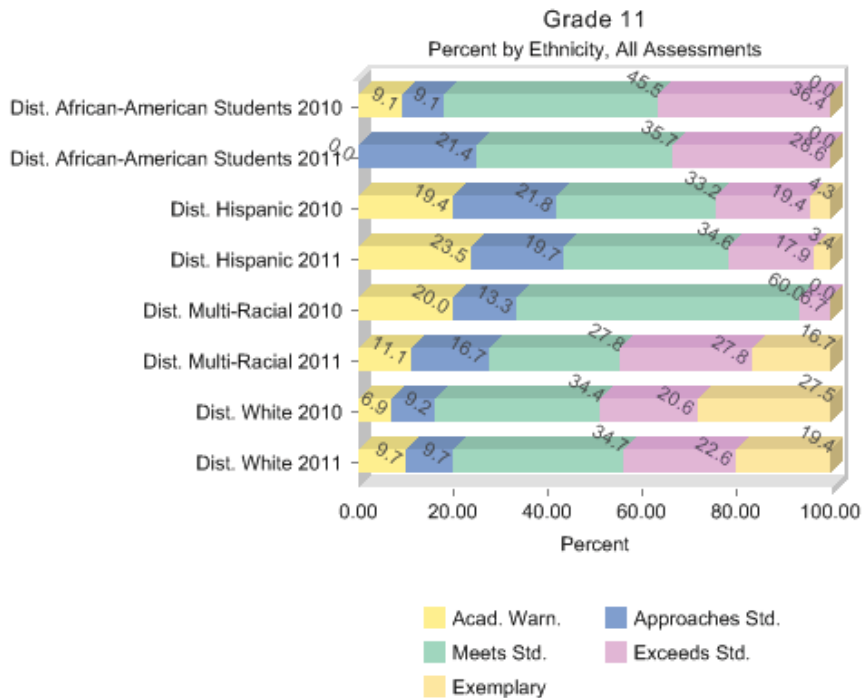
- ✓ [All Students](#)

USD 443
Dodge City
 Box 460
 Dodge City, KS 67801-0460
 (620) 227-1620 (620) 227-1684
Title 1 District On Improvement.

[Show Buildings](#)

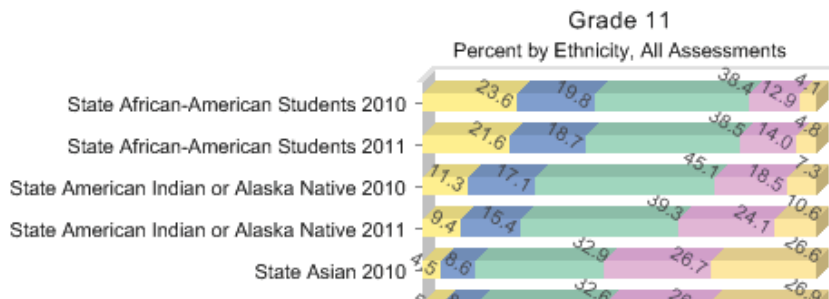
Math Assessment Results

[Grade 03](#) [Grade 04](#) [Grade 05](#) [Grade 06](#) [Grade 07](#) [Grade 08](#)



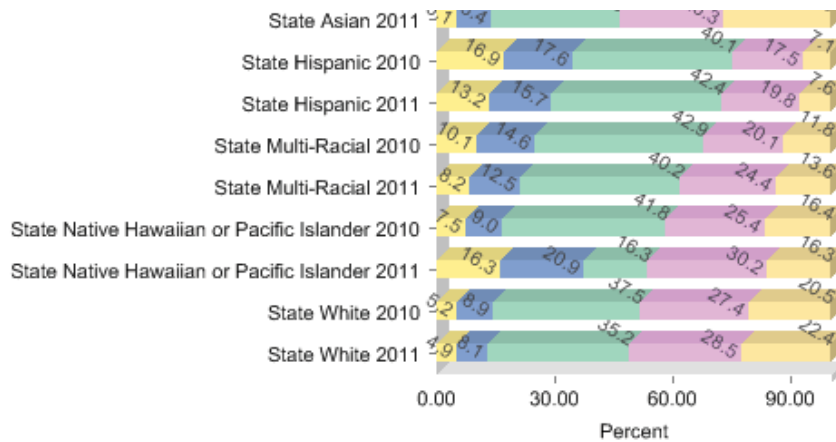
[Text Version](#)

State Assessment Results



District Assessments

- ✓ [Race/Ethnicity](#)
- ✓ [Economically Disadvantaged](#)
- ✓ [Students with Disabilities](#)
- ✓ [English Language Learners](#)
- ✓ [Migrant Students](#)
- ✓ [Gender](#)



History - Govt.

- ✓ [All Students](#)
- ✓ [Race/Ethnicity](#)
- ✓ [Economically Disadvantaged](#)
- ✓ [Students with Disabilities](#)
- ✓ [English Language Learners](#)
- ✓ [Migrant Students](#)
- ✓ [Gender](#)

[Text Version](#)

Percent Not Tested in 2011:

District

African-American Students:	14.3%
Hispanic:	0.9%
White:	4.0%
Multi-Racial:	0.0%

State

African-American Students:	2.3%
Hispanic:	1.3%
White:	0.9%
Asian :	0.7%
American Indian or Alaska Native:	1.1%
Multi-Racial:	1.0%
Native Hawaiian or Pacific Islander:	0.0%

PLEASE NOTE: There may be slight differences between percentages displayed on the Assessment Results pages and those displayed on the Requirements of AYP pages.

Writing

- ✓ [All Students](#)
- ✓ [Race/Ethnicity](#)
- ✓ [Economically Disadvantaged](#)
- ✓ [Students with Disabilities](#)
- ✓ [English Language Learners](#)
- ✓ [Migrant Students](#)
- ✓ [Gender](#)

Student Participation

- ✓ [Attendance Rate](#)
- ✓ [Graduation Rate](#)

NCLB

- ✓ [Accountability](#)
- ✓ [Title I Schools on Improvement](#)
- ✓ [Requirements of AYP](#)
- ✓ [Teacher Quality](#)
- ✓ [NAEP State Results](#)
- ✓ [2009-10 District IDEA State Perf. Plan](#)

Student Demographics

- ✓ [Enrollment](#)
- ✓ [Race/Ethnicity](#)

The assessment results presented on this page include *all* students in the grades tested up to and during the testing window...not just those students enrolled on or before September 20. Slight differences between percentages reported for the assessment results and those reported for Adequate Yearly Progress (AYP) are to be expected. The AYP calculation, as well as the Standard of Excellence calculation, is based upon the results of those students who were enrolled by September 20.



District Information

- ✓ [Demographics](#)
- ✓ [Definitions](#)
- ✓ Summary:
 - [2003-2004](#)
 - [2004-2005](#)
 - [2005-2006](#)
 - [2006-2007](#)
 - [2007-2008](#)
 - [2008-2009](#)
 - [2009-2010](#)
 - [2010-2011](#)

USD 443
Dodge City
 Box 460
 Dodge City, KS 67801-0460
 (620) 227-1620 (620) 227-1684
Title 1 District On Improvement.

[Show Buildings](#)

Math Assessment Results

[Grade 03](#) [Grade 04](#) [Grade 05](#) [Grade 06](#) [Grade 07](#) [Grade 08](#)

- ✓ [Comparative Perf. & Fiscal System](#)

Performance Indicators

Reading

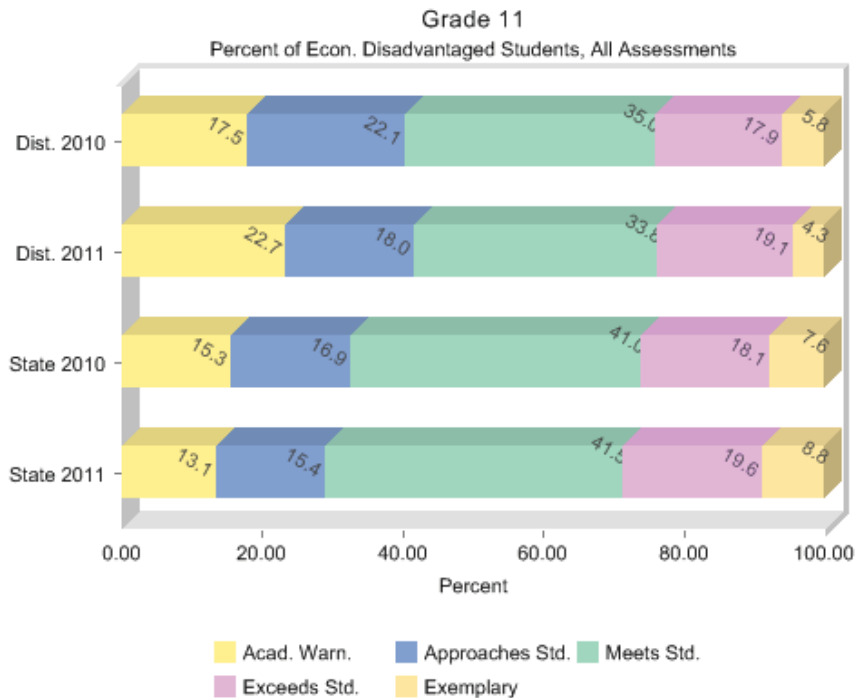
- ✓ [All Students](#)
- ✓ [Race/Ethnicity](#)
- ✓ [Economically Disadvantaged](#)
- ✓ [Students with Disabilities](#)
- ✓ [English Language Learners](#)
- ✓ [Migrant Students](#)
- ✓ [Gender](#)

Math

- ✓ [All Students](#)
- ✓ [Race/Ethnicity](#)
- ✓ [Economically Disadvantaged](#)
- ✓ [Students with Disabilities](#)
- ✓ [English Language Learners](#)
- ✓ [Migrant Students](#)
- ✓ [Gender](#)

Science

- ✓ [All Students](#)



[Text Version](#)

Percent Not Tested in 2011:

District 2.2%

State 1.7%

PLEASE NOTE: There may be slight differences between percentages displayed on the Assessment Results pages and those displayed on the Requirements of AYP pages.

The assessment results presented on this page include *all* students in the grades tested up to and during the testing window...not just those students enrolled on or before September 20. Slight differences between percentages reported for the assessment results and those reported for Adequate Yearly Progress (AYP) are to be expected. The AYP calculation, as well as the Standard of Excellence calculation, is based upon the results of those students who were enrolled by September 20.



District Information

- ✓ [Demographics](#)
- ✓ [Definitions](#)
- ✓ Summary:
 - [2003-2004](#)
 - [2004-2005](#)
 - [2005-2006](#)
 - [2006-2007](#)
 - [2007-2008](#)
 - [2008-2009](#)
 - [2009-2010](#)
 - [2010-2011](#)

USD 443
Dodge City
 Box 460
 Dodge City, KS 67801-0460
 (620) 227-1620 (620) 227-1684
Title 1 District On Improvement.

[Show Buildings](#)

Math Assessment Results

[Grade 03](#) [Grade 04](#) [Grade 05](#) [Grade 06](#) [Grade 07](#) [Grade 08](#)

- ✓ [Comparative Perf. & Fiscal System](#)

Performance Indicators

Reading

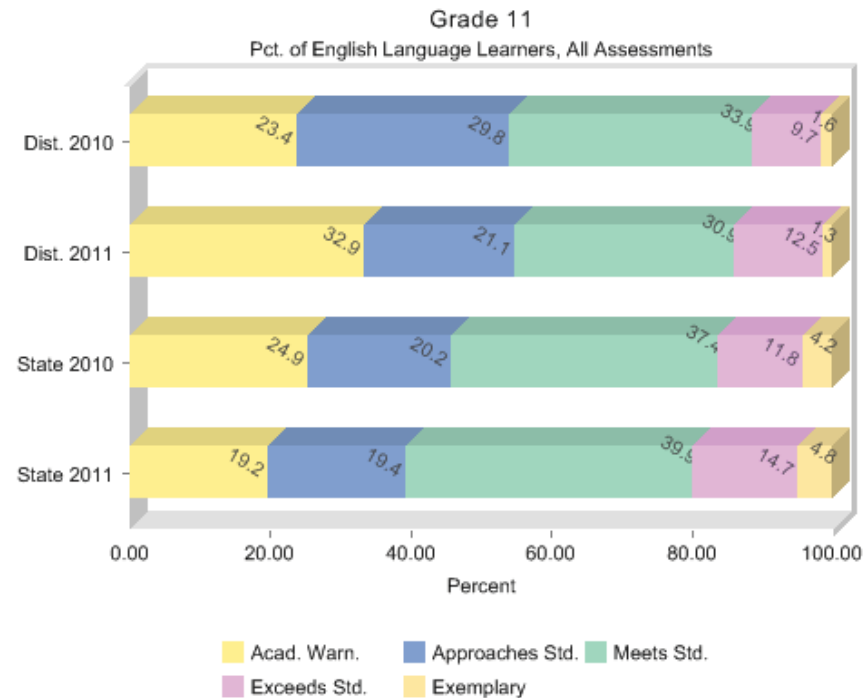
- ✓ [All Students](#)
- ✓ [Race/Ethnicity](#)
- ✓ [Economically Disadvantaged](#)
- ✓ [Students with Disabilities](#)
- ✓ [English Language Learners](#)
- ✓ [Migrant Students](#)
- ✓ [Gender](#)

Math

- ✓ [All Students](#)
- ✓ [Race/Ethnicity](#)
- ✓ [Economically Disadvantaged](#)
- ✓ [Students with Disabilities](#)
- ✓ [English Language Learners](#)
- ✓ [Migrant Students](#)
- ✓ [Gender](#)

Science

- ✓ [All Students](#)



[Text Version](#)

Percent Not Tested in 2011:

District 1.3%

State 2.0%

PLEASE NOTE: There may be slight differences between percentages displayed on the Assessment Results pages and those displayed on the Requirements of AYP pages.

The assessment results presented on this page include *all* students in the grades tested up to and during the testing window...not just those students enrolled on or before September 20. Slight differences between percentages reported for the assessment results and those reported for Adequate Yearly Progress (AYP) are to be expected. The AYP calculation, as well as the Standard of Excellence calculation, is based upon the results of those students who were enrolled by September 20.



Kansas State Department of Education **A+**
Report Card 2010-2011



[Home](#) | [State](#) | [School/District](#)

District Information

- ✓ [Demographics](#)
- ✓ [Definitions](#)
- ✓ Summary:
 - [2003-2004](#)
 - [2004-2005](#)
 - [2005-2006](#)
 - [2006-2007](#)
 - [2007-2008](#)
 - [2008-2009](#)
 - [2009-2010](#)
 - [2010-2011](#)

USD 500
Kansas City
 2010 N. 59th Street
 Kansas City, KS 66104
 (913) 551-3200 (913) 279-2085
Title 1 District on Corrective Action.

[Show Buildings](#)

✓ [Comparative Perf. & Fiscal System](#)

Performance Indicators

Reading

- ✓ [All Students](#)
- ✓ [Race/Ethnicity](#)
- ✓ [Economically Disadvantaged](#)
- ✓ [Students with Disabilities](#)
- ✓ [English Language Learners](#)
- ✓ [Migrant Students](#)
- ✓ [Gender](#)

Math

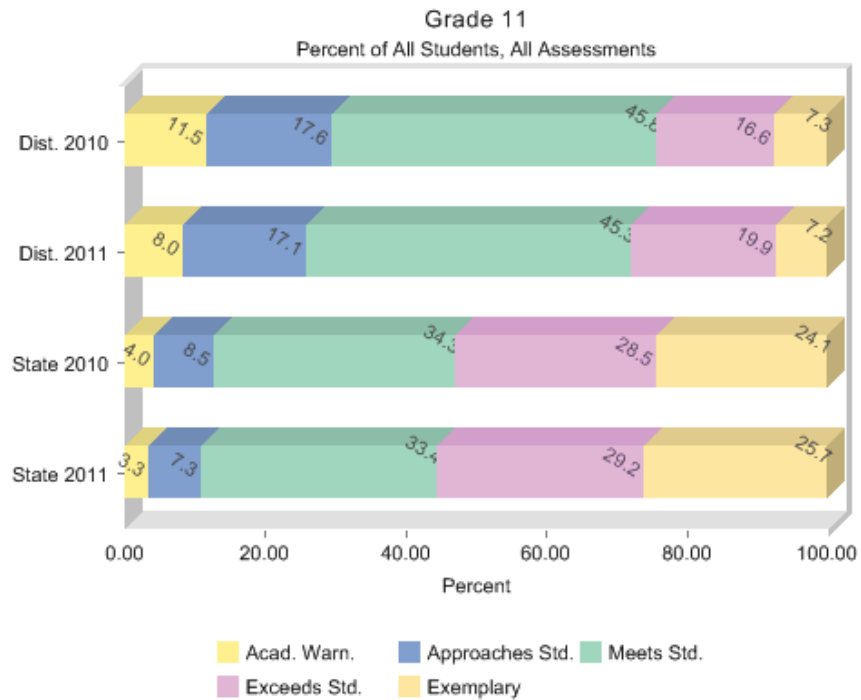
- ✓ [All Students](#)
- ✓ [Race/Ethnicity](#)
- ✓ [Economically Disadvantaged](#)
- ✓ [Students with Disabilities](#)
- ✓ [English Language Learners](#)
- ✓ [Migrant Students](#)
- ✓ [Gender](#)

Science

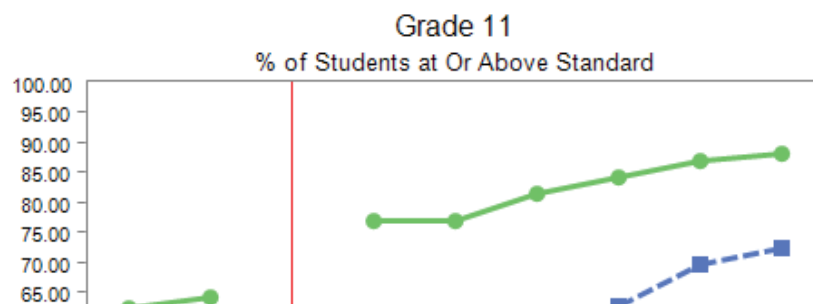
- ✓ [All Students](#)

Reading Assessment Results

[Grade 03](#) [Grade 04](#) [Grade 05](#) [Grade 06](#) [Grade 07](#) [Grade 08](#)



[Text Version](#)



- ✓ [Race/Ethnicity](#)
- ✓ [Economically Disadvantaged](#)
- ✓ [Students with Disabilities](#)
- ✓ [English Language Learners](#)
- ✓ [Migrant Students](#)
- ✓ [Gender](#)

History - Govt.

- ✓ [All Students](#)
- ✓ [Race/Ethnicity](#)
- ✓ [Economically Disadvantaged](#)
- ✓ [Students with Disabilities](#)
- ✓ [English Language Learners](#)
- ✓ [Migrant Students](#)
- ✓ [Gender](#)

Writing

- ✓ [All Students](#)
- ✓ [Race/Ethnicity](#)
- ✓ [Economically Disadvantaged](#)
- ✓ [Students with Disabilities](#)
- ✓ [English Language Learners](#)
- ✓ [Migrant Students](#)
- ✓ [Gender](#)

Student

Participation

- ✓ [Attendance Rate](#)
- ✓ [Graduation Rate](#)

NCLB

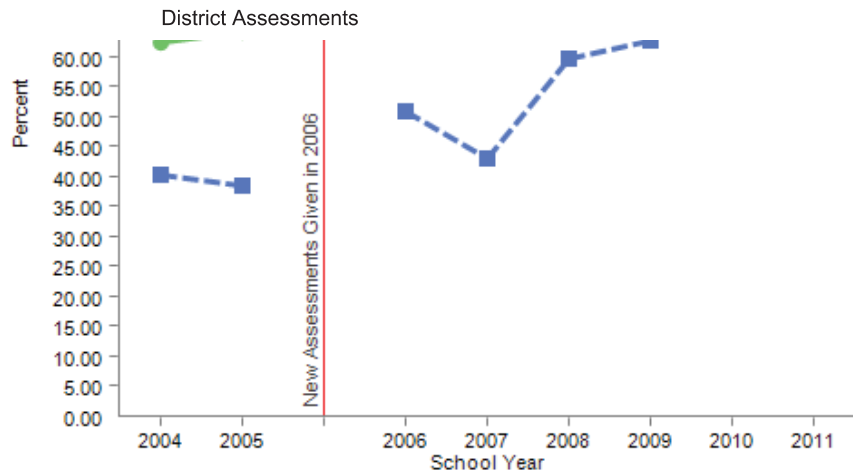
Accountability

- ✓ [Title I Schools on Improvement](#)
- ✓ [Requirements of AYP](#)
- ✓ [Teacher Quality](#)
- ✓ [NAEP State Results](#)
- ✓ [2009-10 District IDEA State Perf. Plan](#)

Student

Demographics

- ✓ [Enrollment](#)
- ✓ [Race/Ethnicity](#)



	2004	2005	2006	2007	2008	2009	2010	2011
■ Dist. All Students	40.4	38.5	51.0	42.9	59.7	62.6	69.8	72.4
◆ State All Students	62.4	64.1	77.1	77.1	81.4	84.3	86.9	88.3

■ Dist. All Students ◆ State All Students

[Text Version](#)

Percent Not Tested in 2011:

District 2.5%

State 1.1%

PLEASE NOTE: There may be slight differences between percentages displayed on the Assessment Results pages and those displayed on the Requirements of AYP pages.

The assessment results presented on this page include *all* students in the grades tested up to and during the testing window...not just those students enrolled on or before September 20. Slight differences between percentages reported for the assessment results and those reported for Adequate Yearly Progress (AYP) are to be expected. The AYP calculation, as well as the Standard of Excellence calculation, is based upon the results of those students who were enrolled by September 20.



Kansas State Department of Education **A+**
Report Card 2010-2011



[Home](#) | [State](#) | [School/District](#)

District Information

- ✓ [Demographics](#)
- ✓ [Definitions](#)
- ✓ Summary:
 - [2003-2004](#)
 - [2004-2005](#)
 - [2005-2006](#)
 - [2006-2007](#)
 - [2007-2008](#)
 - [2008-2009](#)
 - [2009-2010](#)
 - [2010-2011](#)

- ✓ [Comparative Perf. & Fiscal System](#)

Performance Indicators

Reading

- ✓ [All Students](#)
- ✓ [Race/Ethnicity](#)
- ✓ [Economically Disadvantaged](#)
- ✓ [Students with Disabilities](#)
- ✓ [English Language Learners](#)
- ✓ [Migrant Students](#)
- ✓ [Gender](#)

Math

- ✓ [All Students](#)
- ✓ [Race/Ethnicity](#)
- ✓ [Economically Disadvantaged](#)
- ✓ [Students with Disabilities](#)
- ✓ [English Language Learners](#)
- ✓ [Migrant Students](#)
- ✓ [Gender](#)

Science

- ✓ [All Students](#)

USD 500

Kansas City

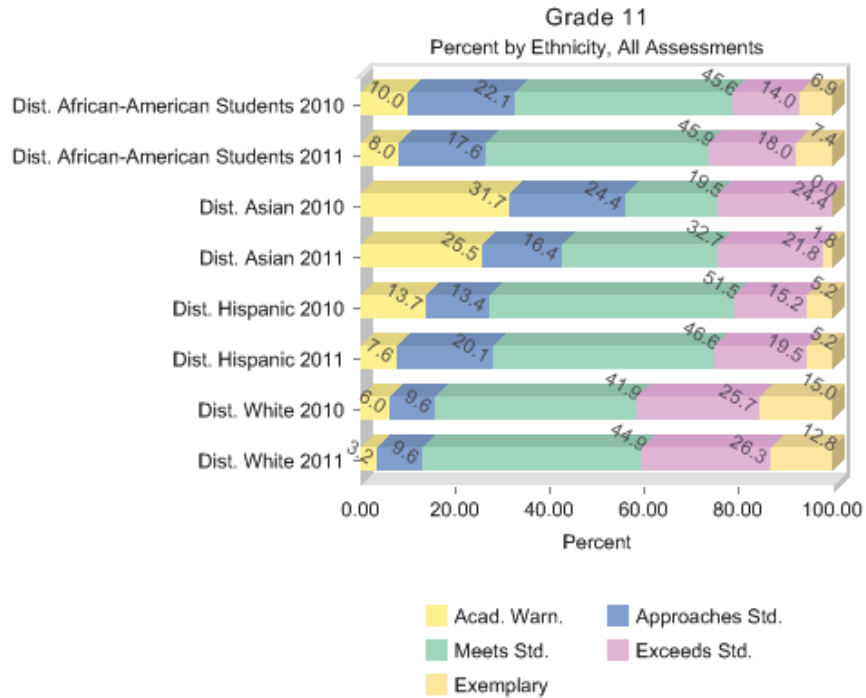
2010 N. 59th Street
Kansas City, KS 66104
(913) 551-3200 (913) 279-2085

Title 1 District on Corrective Action.

[Show Buildings](#)

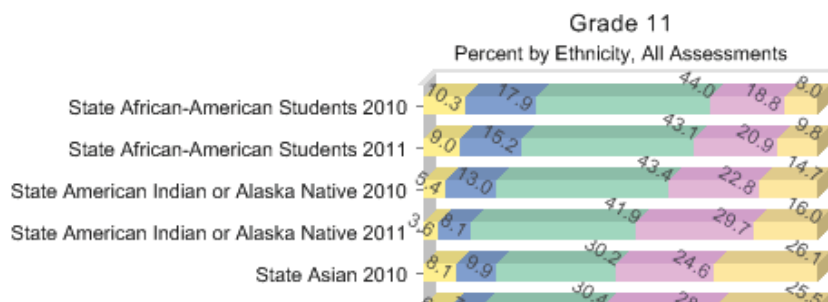
Reading Assessment Results

[Grade 03](#) [Grade 04](#) [Grade 05](#) [Grade 06](#) [Grade 07](#) [Grade 08](#)



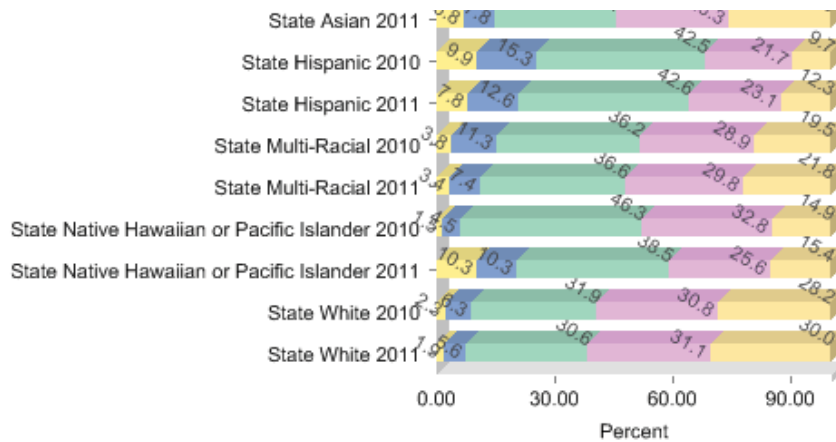
[Text Version](#)

State Assessment Results



District Assessments

- ✓ [Race/Ethnicity](#)
- ✓ [Economically Disadvantaged](#)
- ✓ [Students with Disabilities](#)
- ✓ [English Language Learners](#)
- ✓ [Migrant Students](#)
- ✓ [Gender](#)



History - Govt.

- ✓ [All Students](#)
- ✓ [Race/Ethnicity](#)
- ✓ [Economically Disadvantaged](#)
- ✓ [Students with Disabilities](#)
- ✓ [English Language Learners](#)
- ✓ [Migrant Students](#)
- ✓ [Gender](#)

Writing

- ✓ [All Students](#)
- ✓ [Race/Ethnicity](#)
- ✓ [Economically Disadvantaged](#)
- ✓ [Students with Disabilities](#)
- ✓ [English Language Learners](#)
- ✓ [Migrant Students](#)
- ✓ [Gender](#)

Student Participation

- ✓ [Attendance Rate](#)
- ✓ [Graduation Rate](#)

NCLB

- ✓ [Accountability](#)
- ✓ [Title I Schools on Improvement](#)
- ✓ [Requirements of AYP](#)
- ✓ [Teacher Quality](#)
- ✓ [NAEP State Results](#)
- ✓ [2009-10 District IDEA State Perf. Plan](#)

Student Demographics

- ✓ [Enrollment](#)
- ✓ [Race/Ethnicity](#)

[Text Version](#)

Percent Not Tested in 2011:

District

African-American Students:	3.2%
Hispanic:	0.9%
White:	3.2%
Asian :	1.8%

State

African-American Students:	2.0%
Hispanic:	1.6%
White:	0.9%
Asian :	1.4%
American Indian or Alaska Native:	0.7%
Multi-Racial:	1.0%
Native Hawaiian or Pacific Islander:	0.0%

PLEASE NOTE: There may be slight differences between percentages displayed on the Assessment Results pages and those displayed on the Requirements of AYP pages.

The assessment results presented on this page include *all* students in the grades tested up to and during the testing window...not just those students enrolled on or before September 20. Slight differences between percentages reported for the assessment results and those reported for Adequate Yearly Progress (AYP) are to be expected. The AYP calculation, as well as the Standard of Excellence calculation, is based upon the results of those students who were enrolled by September 20.



District Information

- ✓ [Demographics](#)
- ✓ [Definitions](#)
- ✓ Summary:
 - [2003-2004](#)
 - [2004-2005](#)
 - [2005-2006](#)
 - [2006-2007](#)
 - [2007-2008](#)
 - [2008-2009](#)
 - [2009-2010](#)
 - [2010-2011](#)

USD 500
Kansas City
 2010 N. 59th Street
 Kansas City, KS 66104
 (913) 551-3200 (913) 279-2085
Title 1 District on Corrective Action.

[Show Buildings](#)

[Home](#) | [State](#) | [School/District](#)

Reading Assessment Results

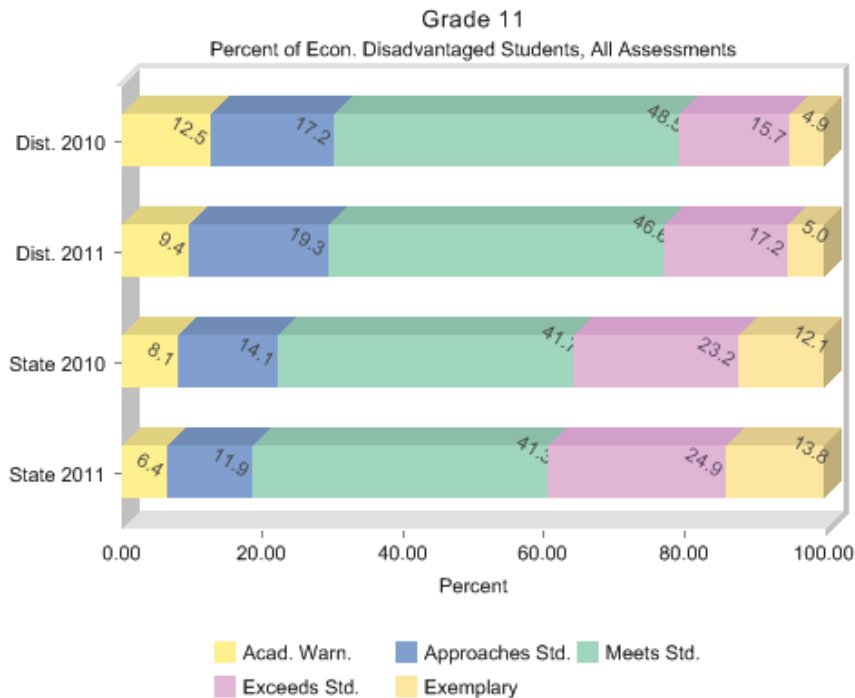
[Grade 03](#) [Grade 04](#) [Grade 05](#) [Grade 06](#) [Grade 07](#) [Grade 08](#)

- ✓ [Comparative Perf. & Fiscal System](#)

Performance Indicators

Reading

- ✓ [All Students](#)
- ✓ [Race/Ethnicity](#)
- ✓ [Economically Disadvantaged](#)
- ✓ [Students with Disabilities](#)
- ✓ [English Language Learners](#)
- ✓ [Migrant Students](#)
- ✓ [Gender](#)



[Text Version](#)

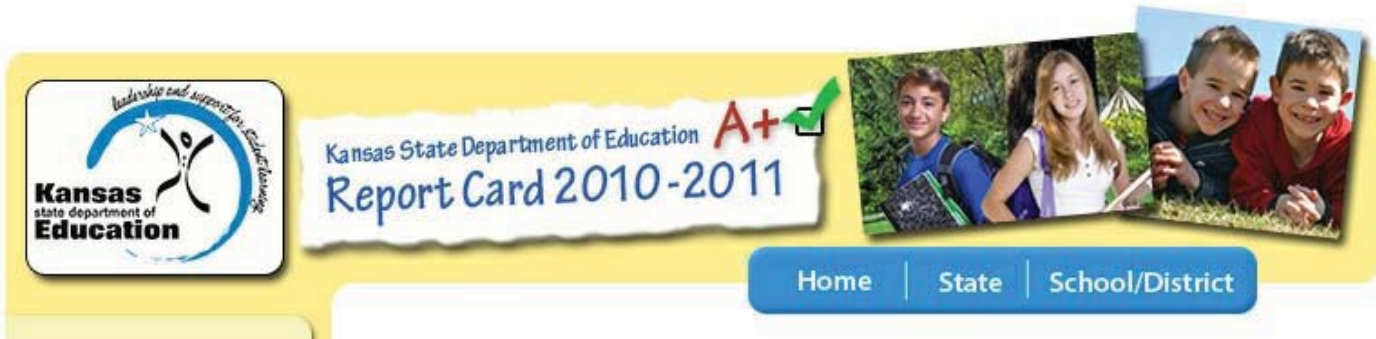
Percent Not Tested in 2011:

District 2.5%

State 1.6%

PLEASE NOTE: There may be slight differences between percentages displayed on the Assessment Results pages and those displayed on the Requirements of AYP pages.

The assessment results presented on this page include *all* students in the grades tested up to and during the testing window...not just those students enrolled on or before September 20. Slight differences between percentages reported for the assessment results and those reported for Adequate Yearly Progress (AYP) are to be expected. The AYP calculation, as well as the Standard of Excellence calculation, is based upon the results of those students who were enrolled by September 20.



District Information

- ✓ [Demographics](#)
- ✓ [Definitions](#)
- ✓ Summary:
 - [2003-2004](#)
 - [2004-2005](#)
 - [2005-2006](#)
 - [2006-2007](#)
 - [2007-2008](#)
 - [2008-2009](#)
 - [2009-2010](#)
 - [2010-2011](#)

USD 500
Kansas City
 2010 N. 59th Street
 Kansas City, KS 66104
 (913) 551-3200 (913) 279-2085
Title 1 District on Corrective Action.

[Show Buildings](#)

Reading Assessment Results

[Grade 03](#) [Grade 04](#) [Grade 05](#) [Grade 06](#) [Grade 07](#) [Grade 08](#)

- ✓ [Comparative Perf. & Fiscal System](#)

Performance Indicators

Reading

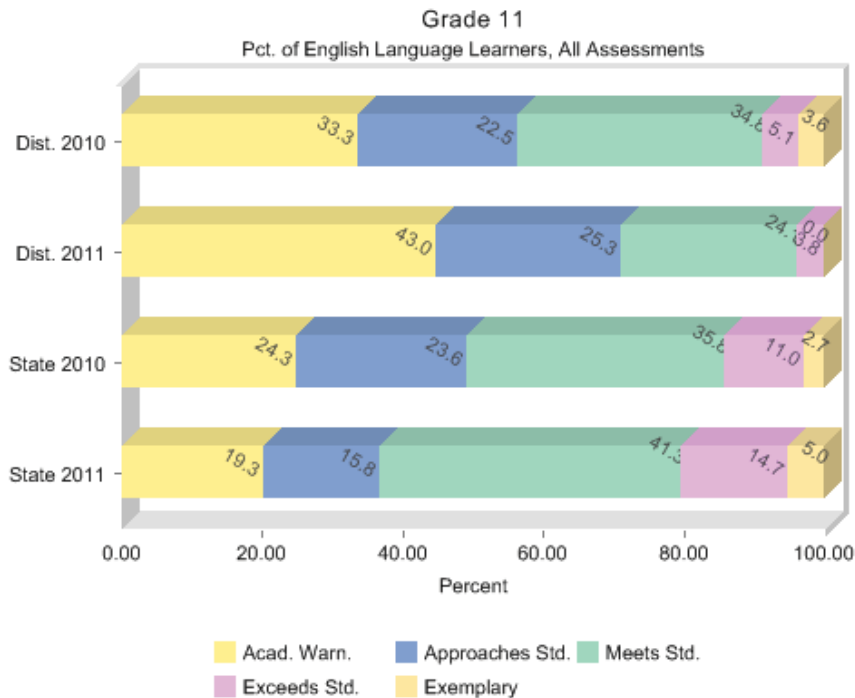
- ✓ [All Students](#)
- ✓ [Race/Ethnicity](#)
- ✓ [Economically Disadvantaged](#)
- ✓ [Students with Disabilities](#)
- ✓ [English Language Learners](#)
- ✓ [Migrant Students](#)
- ✓ [Gender](#)

Math

- ✓ [All Students](#)
- ✓ [Race/Ethnicity](#)
- ✓ [Economically Disadvantaged](#)
- ✓ [Students with Disabilities](#)
- ✓ [English Language Learners](#)
- ✓ [Migrant Students](#)
- ✓ [Gender](#)

Science

- ✓ [All Students](#)



[Text Version](#)

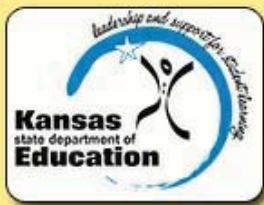
Percent Not Tested in 2011:

District 3.8%

State 3.9%

PLEASE NOTE: There may be slight differences between percentages displayed on the Assessment Results pages and those displayed on the Requirements of AYP pages.

The assessment results presented on this page include *all* students in the grades tested up to and during the testing window...not just those students enrolled on or before September 20. Slight differences between percentages reported for the assessment results and those reported for Adequate Yearly Progress (AYP) are to be expected. The AYP calculation, as well as the Standard of Excellence calculation, is based upon the results of those students who were enrolled by September 20.



Kansas State Department of Education **A+**
Report Card 2010-2011



[Home](#) | [State](#) | [School/District](#)

District Information

- ✓ [Demographics](#)
- ✓ [Definitions](#)
- ✓ Summary:
 - [2003-2004](#)
 - [2004-2005](#)
 - [2005-2006](#)
 - [2006-2007](#)
 - [2007-2008](#)
 - [2008-2009](#)
 - [2009-2010](#)
 - [2010-2011](#)

USD 500
Kansas City
 2010 N. 59th Street
 Kansas City, KS 66104
 (913) 551-3200 (913) 279-2085
Title 1 District on Corrective Action.

[Show Buildings](#)

- ✓ [Comparative Perf. & Fiscal System](#)

Performance Indicators

Reading

- ✓ [All Students](#)
- ✓ [Race/Ethnicity](#)
- ✓ [Economically Disadvantaged](#)
- ✓ [Students with Disabilities](#)
- ✓ [English Language Learners](#)
- ✓ [Migrant Students](#)
- ✓ [Gender](#)

Math

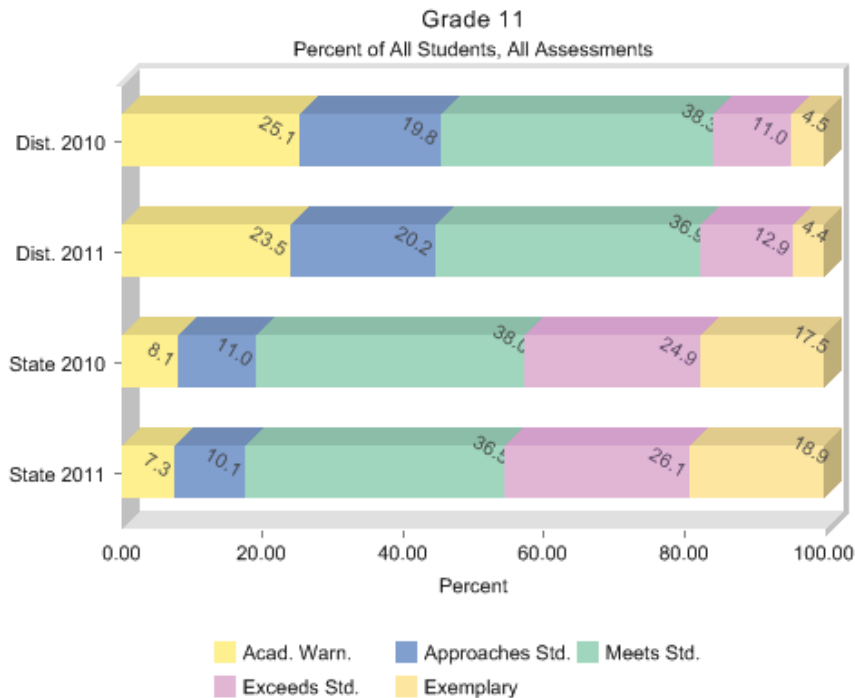
- ✓ [All Students](#)
- ✓ [Race/Ethnicity](#)
- ✓ [Economically Disadvantaged](#)
- ✓ [Students with Disabilities](#)
- ✓ [English Language Learners](#)
- ✓ [Migrant Students](#)
- ✓ [Gender](#)

Science

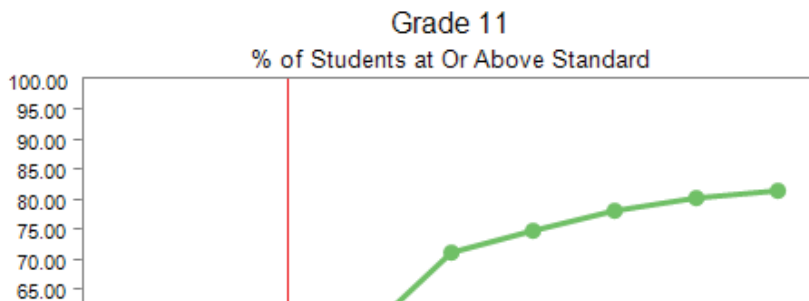
- ✓ [All Students](#)

Math Assessment Results

[Grade 03](#) [Grade 04](#) [Grade 05](#) [Grade 06](#) [Grade 07](#) [Grade 08](#)



[Text Version](#)



- ✓ [Race/Ethnicity](#)
- ✓ [Economically Disadvantaged](#)
- ✓ [Students with Disabilities](#)
- ✓ [English Language Learners](#)
- ✓ [Migrant Students](#)
- ✓ [Gender](#)

History - Govt.

- ✓ [All Students](#)
- ✓ [Race/Ethnicity](#)
- ✓ [Economically Disadvantaged](#)
- ✓ [Students with Disabilities](#)
- ✓ [English Language Learners](#)
- ✓ [Migrant Students](#)
- ✓ [Gender](#)

Writing

- ✓ [All Students](#)
- ✓ [Race/Ethnicity](#)
- ✓ [Economically Disadvantaged](#)
- ✓ [Students with Disabilities](#)
- ✓ [English Language Learners](#)
- ✓ [Migrant Students](#)
- ✓ [Gender](#)

Student

Participation

- ✓ [Attendance Rate](#)
- ✓ [Graduation Rate](#)

NCLB

Accountability

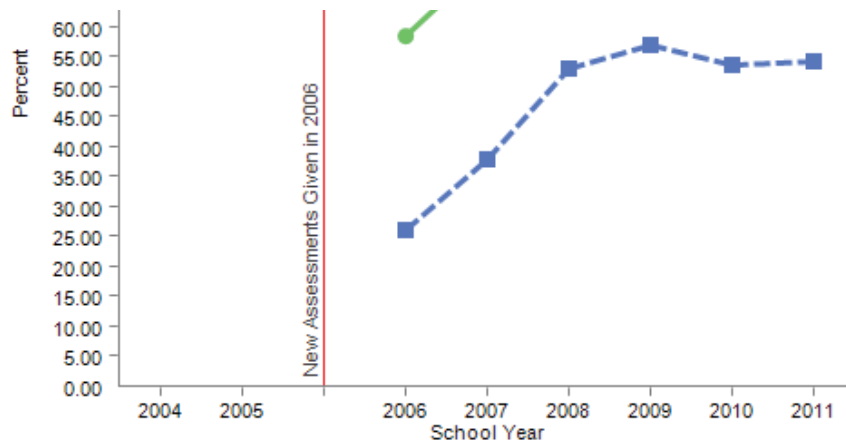
- ✓ [Title I Schools on Improvement](#)
- ✓ [Requirements of AYP](#)
- ✓ [Teacher Quality](#)
- ✓ [NAEP State Results](#)
- ✓ [2009-10 District IDEA State Perf. Plan](#)

Student

Demographics

- ✓ [Enrollment](#)
- ✓ [Race/Ethnicity](#)

District Assessments



	2004	2005	2006	2007	2008	2009	2010	2011
■ Dist. All Students			26.1	37.9	52.9	57.1	53.8	54.2
● State All Students			58.4	71.3	75.0	78.2	80.4	81.5

■ Dist. All Students ● State All Students

[Text Version](#)

Percent Not Tested in 2011:

District 2.2%

State 1.0%

PLEASE NOTE: There may be slight differences between percentages displayed on the Assessment Results pages and those displayed on the Requirements of AYP pages.

The assessment results presented on this page include *all* students in the grades tested up to and during the testing window...not just those students enrolled on or before September 20. Slight differences between percentages reported for the assessment results and those reported for Adequate Yearly Progress (AYP) are to be expected. The AYP calculation, as well as the Standard of Excellence calculation, is based upon the results of those students who were enrolled by September 20.



Kansas State Department of Education **A+**
Report Card 2010-2011



- Home
- State
- School/District

District Information

- ✓ [Demographics](#)
- ✓ [Definitions](#)
- ✓ Summary:
 - [2003-2004](#)
 - [2004-2005](#)
 - [2005-2006](#)
 - [2006-2007](#)
 - [2007-2008](#)
 - [2008-2009](#)
 - [2009-2010](#)
 - [2010-2011](#)

USD 500
Kansas City
 2010 N. 59th Street
 Kansas City, KS 66104
 (913) 551-3200 (913) 279-2085
Title 1 District on Corrective Action.

[Show Buildings](#)

- ✓ [Comparative Perf. & Fiscal System](#)

Performance Indicators

Reading

- ✓ [All Students](#)
- ✓ [Race/Ethnicity](#)
- ✓ [Economically Disadvantaged](#)
- ✓ [Students with Disabilities](#)
- ✓ [English Language Learners](#)
- ✓ [Migrant Students](#)
- ✓ [Gender](#)

Math

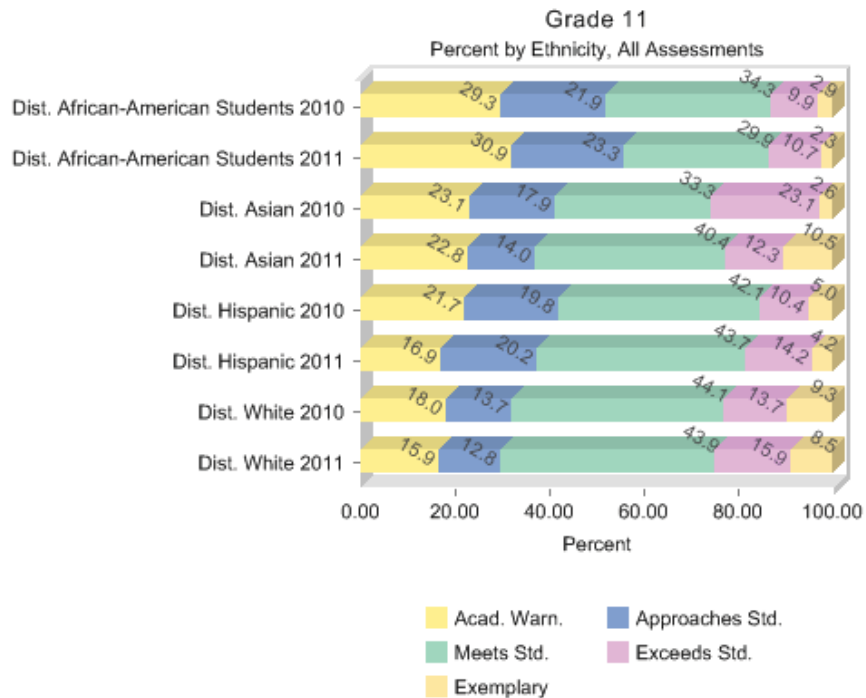
- ✓ [All Students](#)
- ✓ [Race/Ethnicity](#)
- ✓ [Economically Disadvantaged](#)
- ✓ [Students with Disabilities](#)
- ✓ [English Language Learners](#)
- ✓ [Migrant Students](#)
- ✓ [Gender](#)

Science

- ✓ [All Students](#)

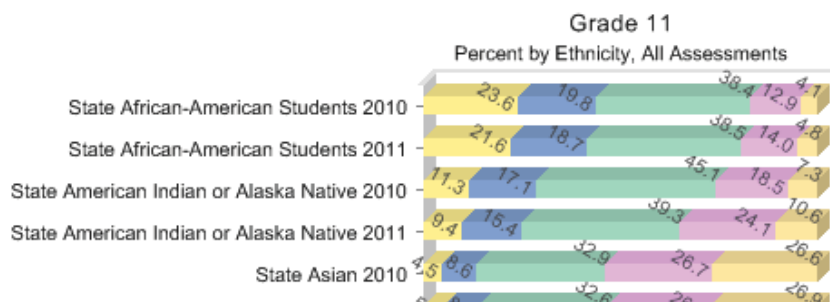
Math Assessment Results

- [Grade 03](#)
- [Grade 04](#)
- [Grade 05](#)
- [Grade 06](#)
- [Grade 07](#)
- [Grade 08](#)



[Text Version](#)

State Assessment Results



- ✓ [Race/Ethnicity](#)
- ✓ [Economically Disadvantaged](#)
- ✓ [Students with Disabilities](#)
- ✓ [English Language Learners](#)
- ✓ [Migrant Students](#)
- ✓ [Gender](#)

History - Govt.

- ✓ [All Students](#)
- ✓ [Race/Ethnicity](#)
- ✓ [Economically Disadvantaged](#)
- ✓ [Students with Disabilities](#)
- ✓ [English Language Learners](#)
- ✓ [Migrant Students](#)
- ✓ [Gender](#)

Writing

- ✓ [All Students](#)
- ✓ [Race/Ethnicity](#)
- ✓ [Economically Disadvantaged](#)
- ✓ [Students with Disabilities](#)
- ✓ [English Language Learners](#)
- ✓ [Migrant Students](#)
- ✓ [Gender](#)

Student Participation

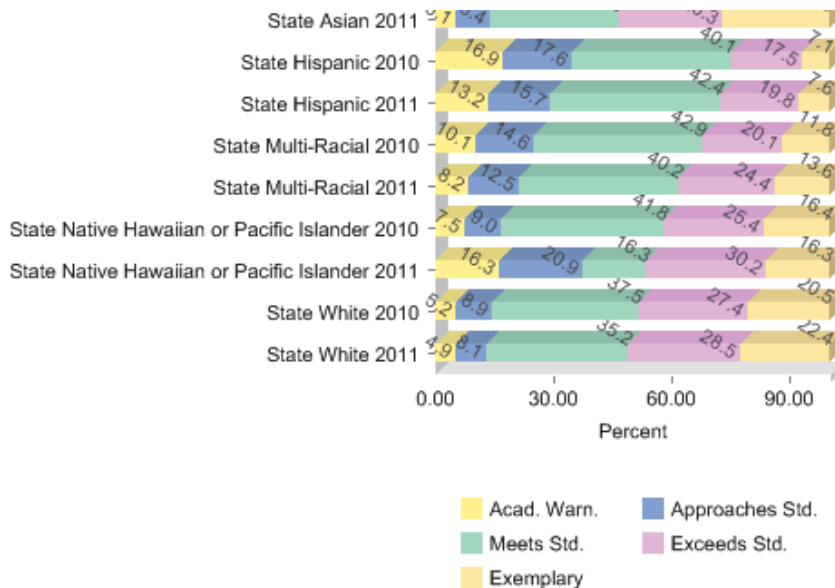
- ✓ [Attendance Rate](#)
- ✓ [Graduation Rate](#)

NCLB

- ✓ [Accountability](#)
- ✓ [Title I Schools on Improvement](#)
- ✓ [Requirements of AYP](#)
- ✓ [Teacher Quality](#)
- ✓ [NAEP State Results](#)
- ✓ [2009-10 District IDEA State Perf. Plan](#)

Student Demographics

- ✓ [Enrollment](#)
- ✓ [Race/Ethnicity](#)



[Text Version](#)

Percent Not Tested in 2011:

District

African-American Students:	2.9%
Hispanic:	0.9%
White:	3.0%
Asian :	0.0%

State

African-American Students:	2.3%
Hispanic:	1.3%
White:	0.9%
Asian :	0.7%
American Indian or Alaska Native:	1.1%
Multi-Racial:	1.0%
Native Hawaiian or Pacific Islander:	0.0%

PLEASE NOTE: There may be slight differences between percentages displayed on the Assessment Results pages and those displayed on the Requirements of AYP pages.

The assessment results presented on this page include *all* students in the grades tested up to and during the testing window...not just those students enrolled on or before September 20. Slight differences between percentages reported for the assessment results and those reported for Adequate Yearly Progress (AYP) are to be expected. The AYP calculation, as well as the Standard of Excellence calculation, is based upon the results of those students who were enrolled by September 20.



District Information

- ✓ [Demographics](#)
- ✓ [Definitions](#)
- ✓ Summary:
 - [2003-2004](#)
 - [2004-2005](#)
 - [2005-2006](#)
 - [2006-2007](#)
 - [2007-2008](#)
 - [2008-2009](#)
 - [2009-2010](#)
 - [2010-2011](#)

USD 500
Kansas City
 2010 N. 59th Street
 Kansas City, KS 66104
 (913) 551-3200 (913) 279-2085
Title 1 District on Corrective Action.

[Show Buildings](#)

Math Assessment Results

[Grade 03](#) [Grade 04](#) [Grade 05](#) [Grade 06](#) [Grade 07](#) [Grade 08](#)

- ✓ [Comparative Perf. & Fiscal System](#)

Performance Indicators

Reading

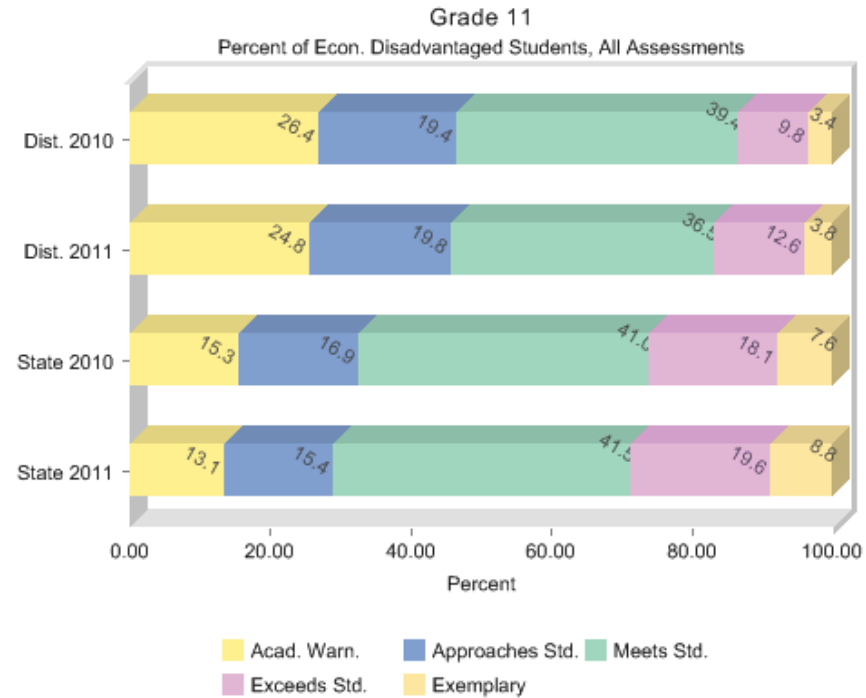
- ✓ [All Students](#)
- ✓ [Race/Ethnicity](#)
- ✓ [Economically Disadvantaged](#)
- ✓ [Students with Disabilities](#)
- ✓ [English Language Learners](#)
- ✓ [Migrant Students](#)
- ✓ [Gender](#)

Math

- ✓ [All Students](#)
- ✓ [Race/Ethnicity](#)
- ✓ [Economically Disadvantaged](#)
- ✓ [Students with Disabilities](#)
- ✓ [English Language Learners](#)
- ✓ [Migrant Students](#)
- ✓ [Gender](#)

Science

- ✓ [All Students](#)



[Text Version](#)

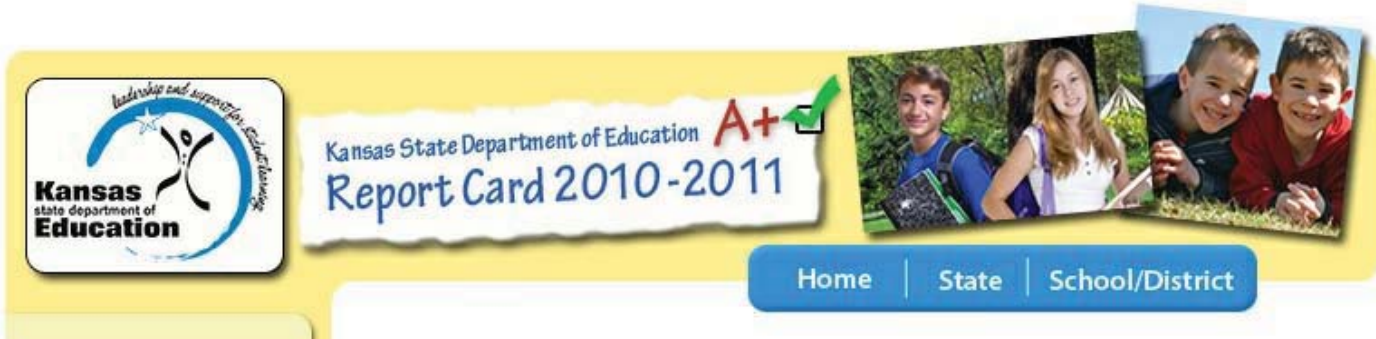
Percent Not Tested in 2011:

District 2.5%

State 1.7%

PLEASE NOTE: There may be slight differences between percentages displayed on the Assessment Results pages and those displayed on the Requirements of AYP pages.

The assessment results presented on this page include *all* students in the grades tested up to and during the testing window...not just those students enrolled on or before September 20. Slight differences between percentages reported for the assessment results and those reported for Adequate Yearly Progress (AYP) are to be expected. The AYP calculation, as well as the Standard of Excellence calculation, is based upon the results of those students who were enrolled by September 20.



District Information

- ✓ [Demographics](#)
- ✓ [Definitions](#)
- ✓ Summary:
 - [2003-2004](#)
 - [2004-2005](#)
 - [2005-2006](#)
 - [2006-2007](#)
 - [2007-2008](#)
 - [2008-2009](#)
 - [2009-2010](#)
 - [2010-2011](#)

USD 500
Kansas City
 2010 N. 59th Street
 Kansas City, KS 66104
 (913) 551-3200 (913) 279-2085
Title 1 District on Corrective Action.

[Show Buildings](#)

[Home](#) | [State](#) | [School/District](#)

Math Assessment Results

[Grade 03](#) [Grade 04](#) [Grade 05](#) [Grade 06](#) [Grade 07](#) [Grade 08](#)

- ✓ [Comparative Perf. & Fiscal System](#)

Performance Indicators

Reading

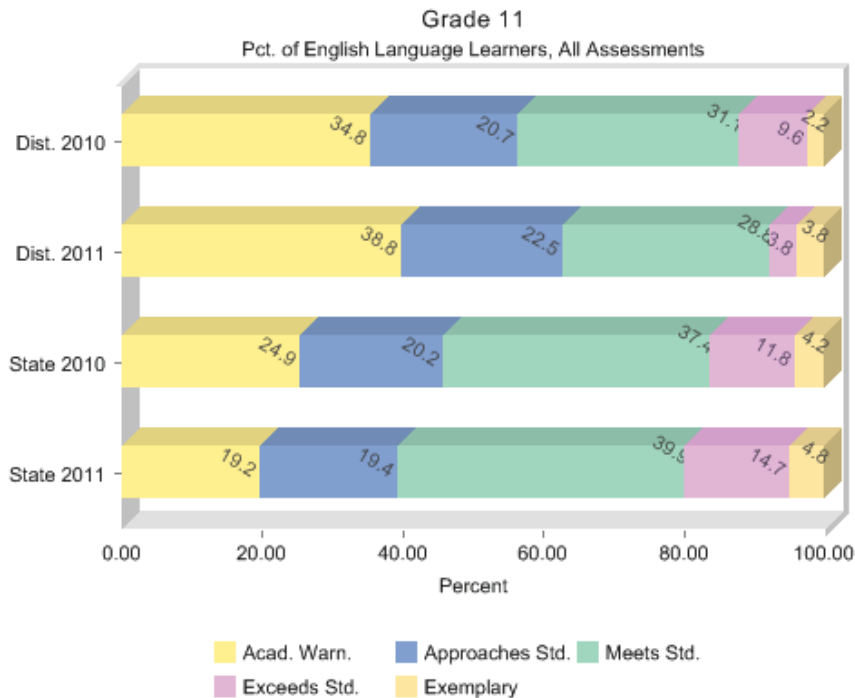
- ✓ [All Students](#)
- ✓ [Race/Ethnicity](#)
- ✓ [Economically Disadvantaged](#)
- ✓ [Students with Disabilities](#)
- ✓ [English Language Learners](#)
- ✓ [Migrant Students](#)
- ✓ [Gender](#)

Math

- ✓ [All Students](#)
- ✓ [Race/Ethnicity](#)
- ✓ [Economically Disadvantaged](#)
- ✓ [Students with Disabilities](#)
- ✓ [English Language Learners](#)
- ✓ [Migrant Students](#)
- ✓ [Gender](#)

Science

- ✓ [All Students](#)



[Text Version](#)

Percent Not Tested in 2011:

District 2.5%

State 2.0%

PLEASE NOTE: There may be slight differences between percentages displayed on the Assessment Results pages and those displayed on the Requirements of AYP pages.

The assessment results presented on this page include *all* students in the grades tested up to and during the testing window...not just those students enrolled on or before September 20. Slight differences between percentages reported for the assessment results and those reported for Adequate Yearly Progress (AYP) are to be expected. The AYP calculation, as well as the Standard of Excellence calculation, is based upon the results of those students who were enrolled by September 20.